



Your guide to membership 2018/19

Welcome to the 2018/19 season

As a member of Table Tennis England, you are the lifeblood of our sport and we want to thank you for the positive contribution you make – both consciously and unconsciously - to help this great game develop, grow and be successful.

Membership is vital in ensuring that Table Tennis England can continue to help and support you as a member while positively contributing to the growth of the sport.

As the national governing body for table tennis in England, we're here to improve the table tennis experience for everyone; from those playing in parks and pubs, sports halls to shopping centres, clubs to the company cafeteria.

We're also here to support schools, clubs, leagues, volunteers and coaches around the country, as well as our current and future Olympic champions.

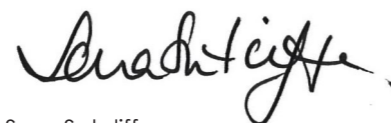
We believe there's never been a more exciting time to be involved in the sport and we're pleased that you're joining us for the 2018/19 season.

To help you get more out of your

passion for playing, we encourage you to take full advantage of your membership and the benefits it provides, many of which we have highlighted within this booklet.

Remember we are here to help, support and advise you at every stage of your membership, whether you are just getting started or are already involved in this exciting sport, and we encourage you to connect with us throughout this season - whether it be via social media, writing to us, talking to us at an event or taking part in our surveys and questionnaires.

I and everyone at Table Tennis England wishes you an enjoyable and successful season.



Sara Sutcliffe
CEO, Table Tennis England



How is Table Tennis England funded?

The majority of our funding comes from Sport England. However, Sport England have reduced their funding to all National Governing Bodies and this trend is likely to continue.

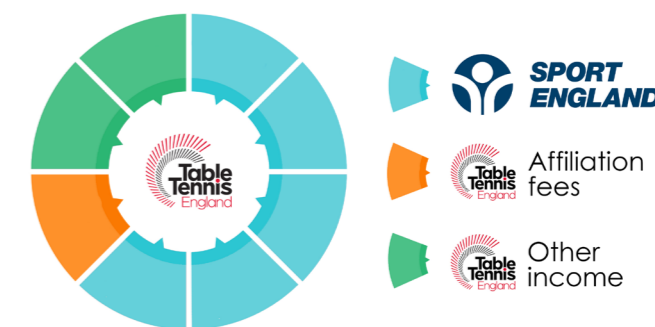
In 2016/17, 72% of our funding came from Sport England. In 2017/18, this figure was 62%.

As an organisation we are making large efforts to address the reduction in funding, become more efficient and diversify our income.

Some of the ways we are doing this includes: increasing commercial income by working with other NGBs to attract joint sponsors, developing and creating new offers and packages aimed at attracting our own sponsors, seeking support from non-traditional sport funders, i.e. health and housing, and reducing costs and making the table tennis infrastructure more sustainable.

However we do need to look to our membership to provide support to maintain the service they receive and to support in key areas where we do not receive funding, this includes our school programmes getting young people active

While affiliation fees make up a small percentage of our funding (9%), they are key to helping develop, promote and administer the game.

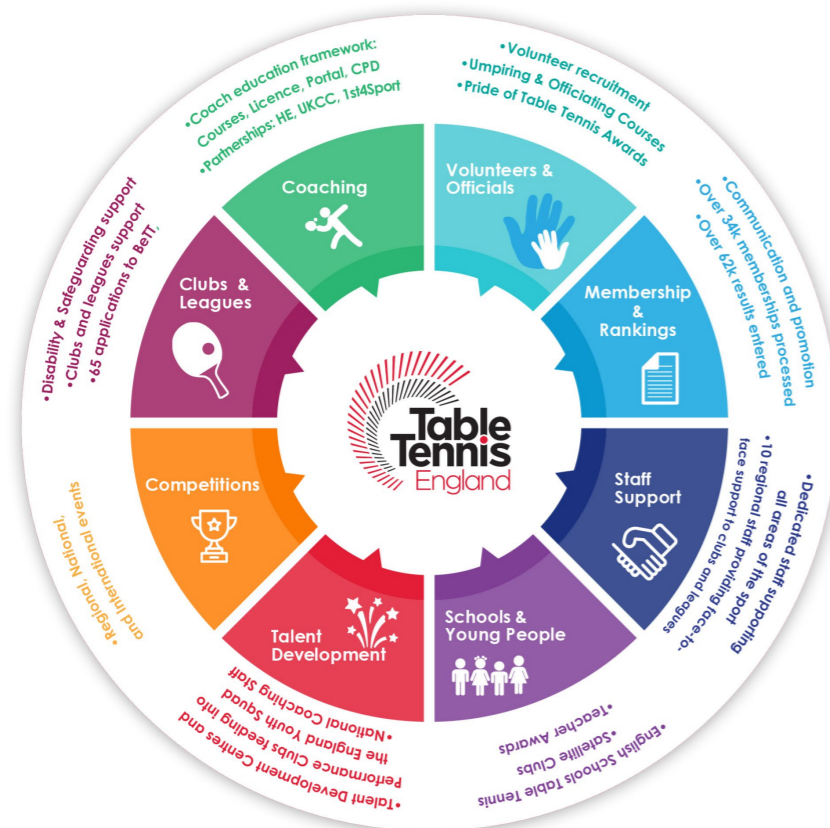


Where our funding comes from

How are your membership fees used?

The majority of your affiliation fees are reinvested in membership services, free provision of League Manager, the provision of insurance cover, child protection, safe guarding and ethics, and support and development for table tennis at all levels from grassroots juniors, cadets and seniors through to internationals.

Below you can see some of the core areas Table Tennis England focuses on:



Supporting the sport: how your fees help fund the future

By becoming a member of Table Tennis England, you not only get many benefits for yourself (which we explore these later in this guide) you also provide a great benefit to the sport by helping us to grow the game and guarantee its future. Your membership fees help us:

- **Get school children started in our sport:** our school programme does not receive public funding, yet we know that when people start playing young, they're more likely to stay playing the sport permanently.
- **Deliver customer services:** every week we answer hundreds of questions by letter, email, telephone and on social media, from players, clubs and leagues seeking help and advice.

As well as attracting more people into the sport, we're also helping to get young people active.

Research has shown that table tennis in schools can help decrease anti-social behaviour, increase pupil's attendance and social cohesion.

- **Create a world class workforce:** providing modern and accessible training for hundreds of tutors, coaches, officials, umpires and volunteers every year to develop their skills and knowledge to make playing table tennis possible for thousands of people around the country.

- **Support clubs, centres and volunteers:** our research and insight into the sport helps us develop programmes and products to help grass roots grow.

- **Create the top talent of the future:** you help provide the stepping stone for our nation's top talent from regional performance to the GB Olympic team. Our top players – including our recent Commonwealth Games medallists – have benefitted from our resources.

As we do not receive public funding for performance programmes, affiliation fees help us support these key aspects from the top to the bottom of the talent pathway.

- **Promote table tennis:** We aim to put table tennis in the spotlight by raising its profile and visibility to get more people playing for longer. We liaise with local and national media to gain coverage of the grass roots through to elite level. We provide live footage of events to outlets like the BBC to ensure you can watch table tennis wherever you are in the country.



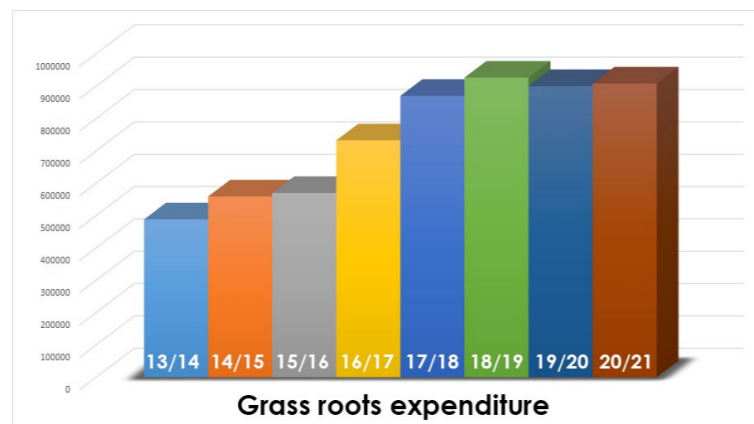
What are we doing for grass roots in 2018/19?

Despite reduced funding, we're actually putting more resources into grass roots table tennis, both in respect of staff time and funding. In fact, for every £1 of membership fee income received we are spending another £2 on grass roots table tennis (this excludes competitions).

Last year we put £870,250 directly into grass roots table tennis – this year we intend to spend £926,659.

Our focus more than ever is on the player and the enablers (clubs, coaches, volunteers and leagues) around them to ensure you get the most out of your affiliation with us.

Below are some of the things to watch out for in the upcoming season:



CLUBS & LEAGUES:

- **Be TT:** phase two of our clubs and league development programme, Be TT, will take place. In the coming season we expect to support 36 clubs and 19 leagues with funding and programme support towards three targeted areas; shorter format leagues; women and girls participation and adult coaching.
- **Back to Table Tennis:** we'll launch this product aimed at getting 35-50-year-olds back into the game. It is the result of extensive research into the sport and competitive play patterns.

- **Bat & Chat:** we will work with clubs to roll out Bat & Chat – our newly launched programme aimed at the 55+ market.
- **ClubSpark:** we will launch a new digital software package for clubs to provide a time-saving and simplified solution for their day-to-day running, including management for: registrations, memberships, resource access, coaching and competitions.
- **Club & Volunteer conferences:** this year's conferences will be held in Yorkshire and South East regions.

YOUNG PEOPLE

- **Youth Product:** we will run a pilot phase of a new youth product aimed at encouraging young people to play table tennis for the long term.

This will primarily be delivered by clubs, with Table Tennis England providing both operational and marketing support.

The insight we have developed into the sport has shown that those who take up table tennis between the ages of 7-11 stay in the sport the longest.

- **Young Ambassadors:** phase two of our Young Ambassadors programme will roll out to recruit young officials who will have the opportunity to go on and officiate at Birmingham 2022 Commonwealth Games.

This scheme is part of our plan to grow the number of officials in the sport, and increase the number of young people volunteering.

COACHES

- **Level 1 Course:** the first new format Level 1 coaching course will take place, aimed at attracting more coaches to the game. The new format includes a reduction from three days of practical to two, and the introduction of online learning to make it more accessible.
- **CPD workshops:** the development of further CPD workshops to help coaches to continuously develop,

who in turn will help players to improve.

COMMUNICATIONS

- **Player performance:** a new, monthly member-only email providing you with coaching tips tailored to your skill level, access to exclusive competitions and statistics on how you're performing this season.
- **Website:** we will continue to develop and improve Table Tennis England's official website, which is a major resource centre for players, clubs and leagues.

This will include everything from its functionality through to creating valuable content, such as our Good Practice Guides.

EVENTS

- **PG Mutual National Championships:** following feedback from members, we've introduced a qualifying event for this year's PG Mutual Senior National Championships.

It will take place the weekend of January 19-20, 2019, with full details being announced over summer.

RESEARCH

- **Informed insight:** We'll continue to conduct research and gain insight into playing habits to develop products aimed at making clubs and leagues more sustainable and increasing grass roots participation.

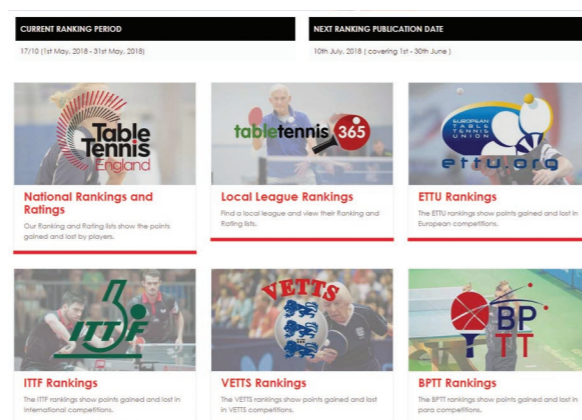


Benefit 1: Rankings & rating lists

As a player member for Table Tennis England, you become eligible to appear in the ranking and ratings list.

Every month our customer service team inputs results to generate the rankings and ratings you see.

We publish the following rankings and ratings on our website: national, local league, ETTU ITTF, VETTS and BPTT.



Benefit 2: Peace of mind insurance

We build insurance cover into membership so you can always be certain that you're properly protected.

This includes: £10 Million Public Liability insurance and Personal Accident insurance for individuals*.

**Personal accident insurance is for paid-for membership only.*



Under 13 Girls	Under 13 Boys	Cadet Girls
 1. Amy Marlott 2. Lauren Loasemore 3. Scarlett anders 4. Niamh Scarborough 5. Anya Milne	 1. Naphong Boonyaprapa 2. Felix Thomis 3. Benjamin Piggott 4. Bertie Kelly 5. Connor Green	 1. Jiamin Wong 2. Darle Proud 3. Ruby Chan 4. Gemma Kerr 5. Millie Rogave
Rankings Ratings	Rankings Ratings	Rankings Ratings
Junior Girls	Junior Boys	Under 21 Women
 1. Charlotte Bardsley 2. Denise Poyet 3. Mollie Patterson 4. Megan Oldrey 5. Jiamin Wong	 1. Joseph Clark 2. Shayam Srjaj 3. James Smith 4. Wing Cheong Kiwan 5. Ethan Walsh	 1. Tin-Tin Ho 2. Maria Tsaplatinas 3. Emily Bolton 4. Denise Poyet 5. Charlotte Bardsley
Rankings Ratings	Rankings Ratings	Rankings Ratings

Did you know?

Rankings and ratings is the most visited section of our website, with thousands of people accessing them every week. You can also view your own audit trail by logging into our membership platform.

Every year our customer service team inputs over 60,000 results to generate the rankings.



Did you know?

Title sponsors of the National Championships, PG Mutual, provide members with a 20% discount off the first two years' cover.

The income protection specialists provide insurance if you are unable to work due to illness or injury. You can find out more on the benefits section of our website.

To view rankings and ratings, visit www.tabletennisengland.co.uk/compete/rankings-and-ratings/

Benefit 3: Save yourself money

Access hundreds of discounts in your Membership Benefits Club.

The Table Tennis England Benefits Club is a portal packed with offers, discounts and promotions from hundreds of retailers and organisations across the country - saving you money on everything from table tennis gear to tickets, cars to cinema tickets and getaways to gyms.



Benefit 4: Expert guidance & support

We are here to help, support and advise you at every stage of your membership.

Our dedicated customer service team are here to help with general enquiries, while our regional staff are available to help clubs and leagues.

If you need advice on any area of the sport, we will always try to assist.



Did you know?

Only 10% of members accessed our membership portal last year.

That means 90% of members missed out on earning their membership fees back through discounts on other purchases. How much will you save?



“Table Tennis England is really pushing us and supporting us to improve the quality of the experiences we provide here.”

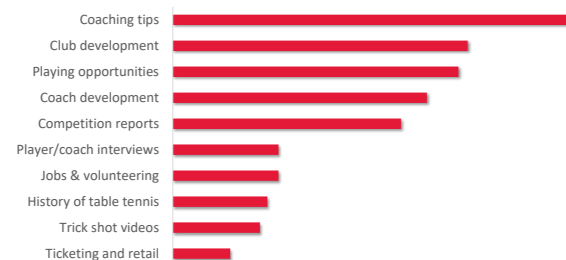
Colin Wilson,
Managing DiRector



Benefit 5: Coaching video tips

New for the 2018/19 season, is monthly video tips and advice from table tennis experts on all aspects of the game.

You'll receive these in our brand new members-only newsletter. We'll tailor the tips to suit your skill level - in the first edition you can choose whether you're a beginner, intermediate or advanced player.



Did you know?

Coaching tips was the most requested content type in our 2017 National Member Survey.

You asked, we acted!

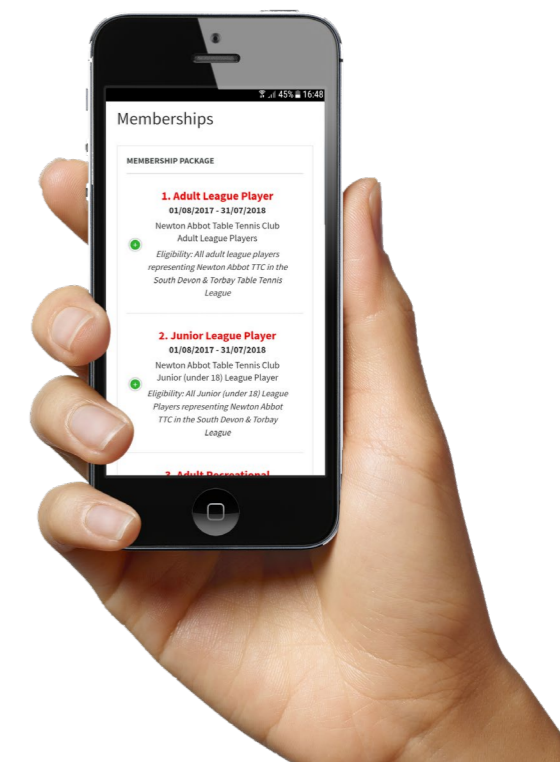
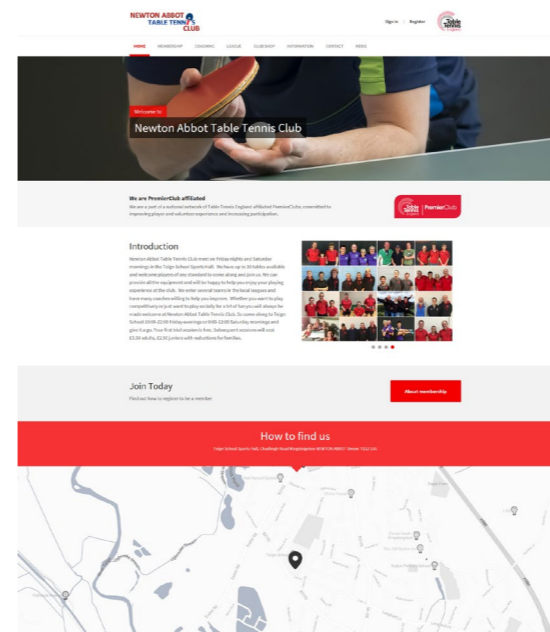
Benefit 6: Digital software

Part of your membership fees goes towards securing internet-based systems to help clubs and leagues and operate more efficiently, and to allow members to access information about these.

This includes securing the provision of, and enhancing, the free League Manager function on the Table Tennis 365 website.

It also includes a new platform we're launching this year called ClubSpark.

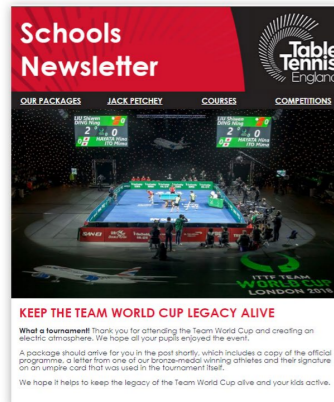
This digital software package provides clubs a time-saving and simplified solution for their day-to-day running, including management for: registrations, memberships, resource access, coaching and competitions – making life easier for both organisers and members.



Benefit 7: 'First-to-know' news updates

Receive our weekly email newsletter, **Over the Net**, which keeps you up-to-date with the latest must-know table tennis developments, news and competitions.

We also produce dedicated newsletters for clubs, coaches, schools and volunteers, to help them grow their own areas.



Did you know?

We sent more than 1.5 million emails to 50,000 different recipients during the last season.

If you want to check or change what newsletters you receive from us, you can do this by clicking on the 'update my preferences' button at the bottom of any previous newsletter we've sent you.

Benefit 8: Exclusive competitions

Our members have the opportunity to enter exclusive competitions and prize draws every month.

Coming up soon is signed kit, a coaching session with a Team England coach and a visit from a Team England player to your club.

Read your monthly members-only newsletter to enter.



Did you know?

So far in 2018 we've had: signed merchandise, a VIP experience to the ITTF Team World Cup & tickets to the PG Mutual National Championships all up for grabs.

PG MUTUAL
**NATIONAL
CHAMPIONSHIPS**

**WIN A
SIGNED
ENGLAND
KIT**



To view the range of benefits visit www.tabletennisengland.co.uk/membership/membership-benefits/

Benefit 9: Priority ticket access & discount

Be the first to know about major national and international events that Table Tennis England is hosting and get priority access and member-only discount offers.

Last season our members benefited from exclusive pre-sale access and 15% discount to the prestigious ITTF Team

World Cup in London.

Every year, you are also entitled to 10% off tickets to the PG Mutual Senior National Championships.

To find out what tickets offers are available, check out the membership benefit section of our website.*



*www.tabletennisengland.co.uk/membership/membership-benefits/

Benefit 10: Help shape the future of our sport

Have your say by getting involved in Table Tennis England led or endorsed research projects and surveys.

The insight we gain from member surveys helps us form our future strategies.

We also hold member roadshows and conference throughout the year - come along and have your say.

Did you know?

Later this year, we're going to be launching a national survey into table tennis in England.

This major insight piece will be aimed at anyone involved or interested in table tennis.

Keep an eye on our website for its launch!



Benefit 11: Enter competitions & tournaments

Your membership gives you access to a range of table tennis competitions and tournaments.

For player members: this includes: 1 Star Opens, County Championships, English Leagues Cup Competition, National Junior League, National Cadet League, Regional Tournaments, Friendly International Matches,

over 40s singles events in VETTS Regional and National Masters competitions.

For those with a player licence, you get all of the above and access to the British League or National tournaments, which are 2* or above, some foreign leagues, ITTF event or other international tournaments.

Did you know?

We've changed the format of the PG Mutual Senior National Championships this year, following feedback from members.

On Saturday, January 18, 2019, there will be a qualifier event taking place. Details will be released in July 2018.



To find out more about the PG Mutual Nationals visit www.tabletennisengland.co.uk/compete/our-national-championships

Benefit 12: Be nominated for an award

As a member of Table Tennis England, you're eligible to be nominated for a Pride of Table Tennis Award.

The annual Pride of Table Tennis Awards seek to honour the volunteers, officials, coaches and personalities who are the heartbeat of our sport.

There's 11 categories, including a new one for 2018 - League of the Year.



Did you know?

We launched the Pride of Table Tennis Awards two years ago. Since then almost 400 people have been nominated for the work they do for our sport.

As well as being nominated for an award, you can also nominate people you feel deserve the recognition.

To find out more about the awards, visit www.tabletennisengland.co.uk/programs/pride-of-table-tennis

Table tennis...
a sport for all, for life!



Contact information

Table Tennis England
Norfolk House
88 Saxon Gate West
Milton Keynes
MK9 2DL

Tel: 01908 208860
Email: help@tabletennisengland.co.uk
Web: tabletennisengland.co.uk
Twitter: @TableTennisEng
Facebook: /TableTennisEngland