

DESIGN A TABLE TENNIS ENGLAND MASCOT COMPETITION

We are calling upon children aged between 4 and 11 who live in Kent to submit their designs for a Table Tennis England Mascot.



The six winning designers will be rewarded with a place on the player escort team at the England v Slovenia Women's European Qualifier Match that takes place at Medway Park, Gillingham, Kent on November 22nd 2016.

Rules

- The child must be aged between 4 and 11 years old
- The child must live in the county of Kent
- Entries must be submitted by 11.59pm on Monday 10th October 2016
- The mascot designs should be the work of the child alone
- The child must be available to attend the event on 22nd November 2016 and be at the venue no later than 4:30pm
- The child must be accompanied to the event by a responsible adult

Prize

- The designers of the six best entries will each win two tickets to the England v Slovenia event to be held on 22nd November 2016, one for them and the accompanying adult
- The winning designers will be a part of the player escort team, who will accompany players from both teams out onto the field of play before matches start
- Winners will be given T-Shirt to be worn on the day and to keep afterwards plus a Table Tennis England goody bag

Entering the Competition

- Participants should complete the entry form on the following page and return it along with their mascot design either by post or email
- We will accept the designs by post or as a scanned, full colour copy via email. Details of where to send them are on the application form overleaf
- The entries will be judged by the Table Tennis England Senior Management Team where the six best entries will be chosen

TABLE TENNIS ENGLAND MASCOT COMPETITION ENTRY FORM



This fully completed and signed form must be submitted along with the mascot design by 11.59pm on Monday 10th October 2016.

Child's Details

First Name:		Surname:	
Date of Birth:		Gender:	
Full Address, county and Postcode:			
Name of School:			

Your Details (to be completed by a parent or guardian)

First Name:		Surname:	
Tel No:		Mobile No:	
Email Address:			
Relationship to child:			
Full Address and Postcode: (if different to the above)			

Declaration

I declare that:

1. The mascot design on this form is the child's own work
2. I am the parent or legal guardian of the above named child
3. The child can attend the England v Slovenia Women's European Qualifiers taking place on Tuesday 22nd November 2016 at Medway Park, Gillingham and will be accompanied by a responsible adult

Signed:		Dated:	
---------	--	--------	--

SUBMITTING YOUR ENTRY

By Post

Please post entries to:

England Leopard Mascot Competition
Table Tennis England
Norfolk House, 88 Saxon Gate West
Milton Keynes
MK9 2DL

By Email

Send good quality scans or photographs of the completed form to:

kieron.pelling@tabletennisengland.co.uk

DESIGN A TABLE TENNIS ENGLAND MASCOT COMPETITION

Table Tennis England is looking for help to create a brand new mascot.



Your design could win you a spot as one of six mascots who will accompany the best women's table tennis players from England and Slovenia out onto the field of play in their European Qualifier Match.

YOUR DESIGN

To help get you started here are some key things we would like you to included in your final design:

The Leopard

The Leopard is the symbol of England's elite table tennis players. It appears on the kit all England players wear when competing. The England Team is known as 'The Leopards'.

So, the character you design should be a leopard.

Kit

The leopard character you design should wear a top and shorts and carry a table tennis bat. It is up to you whether the character wears any other accessories such as headwear, shoes, etc.

Inspiration

We want you to be really creative with your design. On the next page are a few images to help get your ideas started.

Your Competition Entry

We will accept entries that use the following media:

- Pencil, crayons, ink and colouring pens
- Paint, including acrylic and water colours
- Collage and mixed media such as a collage or paper cut outs

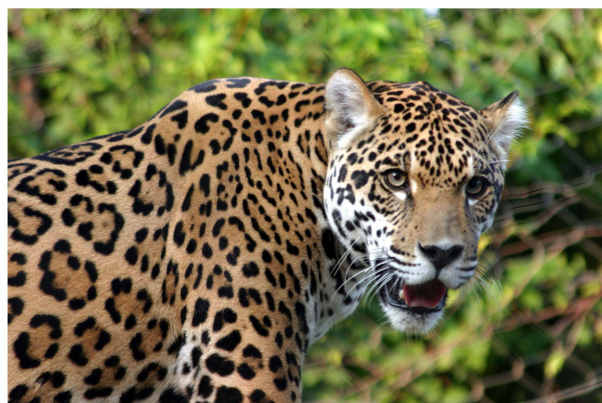
We will not accept entries created by electronic media such as Adobe Photoshop.

FINALLY

Have fun coming up with your design and good luck in the competition!

INSPIRATIONAL IMAGES

Use these images to help get you started with your design. Take a look at other mascot designs to see what other sports and team mascots look like, then create your own exciting mascot on the following page!



YOUR MASCOT DESIGN

Use this page for your design.