



**ANNUAL REPORT 2012/13  
AND STATEMENT OF ACCOUNTS**

**FOR THE YEAR ENDED 31 MARCH 2013**



# ETTA

# Mission Statement

## OUR VISION

To provide an environment that promotes and supports active, lifelong participation in Table Tennis at all levels whilst striving to identify and develop Commonwealth, European, World and Olympic/Paralympic champions.

## OUR MISSION

Working in partnership to create opportunities for all to enjoy the sport of Table Tennis, to stay in the sport and achieve their full potential.

## OUR OBJECTIVES

- **Grow** - increase participation in Table Tennis with a focus on priority groups in the school, club, league and community sectors.
- **Sustain** - to provide a positive experience and retain people in Table Tennis through an effective network of accredited clubs, facilities, coaches, officials, volunteers, leagues and other competitive opportunities.
- **Talent** - to achieve medal success at European, Commonwealth, World and Olympic/Paralympic level.
- **Corporate Governance and Modernisation** - to ensure we operate and deploy our resources with maximum efficiency, effectiveness and probity.

## OUR ROLE

- To be the strategic lead for the development of Table Tennis in England.
- To improve the quality of experience in Table Tennis of our members, customers and partners.
- To inform, influence and persuade public opinion and key decision makers in sport of the benefits to society from participation and investment in Table Tennis.

## OUR VALUES

- **Honesty and integrity** - promoting and encouraging fair play.
- **Leadership** - providing effective, focused and inspirational leadership.
- **Community spirit** - providing an inclusive community for elite, developing, social players and families.
- **Equal opportunity** - providing for diverse needs of age, culture and disability.



## Contents

**2** Chairman's Foreword

**4** Chief Executive's Statement

**6** National Council

**8** Facts and Figures

**10** Annual Snapshot

**14** Departmental Reports

**14** Operations

**17** Finance

**19** Press & Publicity

**20** Competitions & Marketing

**27** Development

**36** Coaching & Performance

**44** International Matters

**46** Awards and Thanks

**48** Results

**52** Statement of Accounts

Glossary on the inside back cover



# Chairman's foreword

This will be my last report to members in my capacity as your Chairman covering the last 10 years. During this decade I have led the sport through many challenging times with a commitment to support our sport at all levels. This involved assisting its growth, being transparent and commencing the changes necessary for our sport's future. This also meant satisfying the many Sport England requirements for governance of national governing bodies.

I was obviously very disappointed with this year's election result but wish the sport well over the coming years under its new Board. I will continue the other volunteering work I do within the sport as well as playing in local leagues and other competitions.

The last 12 months have been both exciting and challenging for table tennis with the new Whole Sport Planning process being started and its first year being put in place. This resulted in an investment commitment by Sport England of £11M over the next four years, a 20% increase from the last WSP Award, in table tennis.

The discussions and agreement with Sport England gave the ETTA a first year direct award of £2,265,000 covering four specific ring fenced areas plus a £250,000 "Ping" investment. The balance of the four-year award is subject to three "special award conditions" being implemented by the end of 2013, in particular a Corporate Strategy and

Current Staffing review via consultants appointed in liaison with Sport England.

I have been leading the work with my Board on this review in conjunction with, and active participation from, all areas of our sport including the new Board. Clearly they will be responsible for taking over the "ownership" and "implementation" of the review, meeting the agreed outcomes for 2013/14, and completing a detailed revised and costed delivery plan for the ETTA participation programme by 31st December 2013 for the 2014/15 financial year, as part of the "special award conditions".

These are essential conditions to assist in the negotiations for the ETTA to be awarded the balance of £8,485,000 for the next three years (2014 to 2017), which was allocated for table tennis in December 2012 during our negotiations with Sport England.

In addition within the "Investment Principles" of Sport England for national governing body governance is a requirement to review and implement changes in the ETTA Company Memorandum and Articles (M&A) by October 2014. To facilitate this we have put in place specialist consultants to present their recommendations to the new Board. When incorporation took place in August 2001 the then Board transferred the old Association's rule book into the new Company's M&A, whereas the old rules in essence should have become regulations. As

a consequence, all changes have had to go to the AGM for agreement and subsequent submission to Companies House under Company Law.

Also two important pieces of work, we have commissioned, have started with a view to addressing the need to generate more of our own income from the private/commercial sector.

Firstly, leading commercial/sponsorship agency, Fast Track, is undertaking a comprehensive commercial audit and development of a commercial partnership strategy designed to achieve higher levels of long term income whilst ensuring that the ETTA still operates within prudent business and political constraints.

Secondly, the Green and Gold Partnership have been commissioned to investigate the opportunities, risks and processes associated with the development of an ETTA Foundation to receive charitable donations.

Since the election the present Board has co-operated and worked with the new team to ensure that the handover of responsibilities to them following the AGM has been conducted in a professional and managed way by both administrations.

I would like to thank both my team (Board) for their contributions and dedicated work over the last decade and the staff for their support and the positive impact they have had upon

**Directors of the Association**



**Alex Murdoch  
Chairman**



**Late Keith Ponting  
President**



**Peter Bradley  
Deputy Chairman**



**Martin Clark  
Treasurer**

table tennis. Details of each specific department's work and achievements over the last 12 months are contained within this Annual Report.

Richard Yule, the ETTA Chief Executive, has retired after 18 years in the post. I must, additionally, thank him for his massive contribution to table tennis which is recognised both within and outside of our sport. My relationship with Richard has been close with support for each other and a determination to move our sport forward. I wish him all the best now and in the future.

Special thanks also go to the many volunteers working daily for both the sport and its members across the length and breadth of England at local clubs, leagues, counties, regions and nationally. Without these volunteers and the band of dedicated technical officials our sport would not function.

I will not list all the details of what the ETTA has achieved over the last 10 years apart from saying that its financial

position is much stronger than when I first came into office. We now have human resources procedures and contracts for staff, a better website and the free provision of TT365 covering both Membership and League/Club Management systems for clubs and leagues. We also have a full complement of support staff, detailed policies covering many areas, Individual Membership (IM) put in place for the ETTA after 75 years which will improve direct communications to members, civil liability insurance now included in the IM fees for members, hence taking the burden away from local committees, a large increase in allowances covering mileage and food for volunteers/officials on ETTA business, and many new projects which are included in the departmental reports. This has resulted in positive Active People Survey results,

**Vice-Chairmen**



**John Dignum  
Operations**



**Mike Holt  
Competitions/Marketing**



**Late Jim Beckley  
Press & Publicity**



**Nick Heaps  
Special Projects**



**Eileen Shaler  
Development**



**Peter Charters  
Coaching/Performance**

the staging of two English Opens, a Men's World Cup and ITTF Pro Tour Finals, and significant investments from the Jack Petchey Foundation and Britdoc Films.

Finally I have to say that I was very proud to be involved with table tennis during the Olympic and Paralympic Games in London during 2012, a "once in a lifetime opportunity" for us all.

Alex Murdoch



# Chief Executive's Statement

For the final time it is my pleasure to welcome you to our Annual Report, a document which strives to encapsulate, record and communicate an ever growing range of activities during the past year undertaken by an outstanding group of talented volunteers and a team of dedicated professional staff.

I joined the Association in 1995 and the ETTA Management Committee Report of 1995/6 opened with: "The season has been one of contrasts which has seen sustained progress in several areas of the Association's activities, whilst on the other hand there have been some disappointments. There is no doubt the world of sport is going through a period of massive change." Plus ca change I hear you say!

While the sporting landscape does seem to have been in a constant state of flux since 1995, the ETTA has survived the turbulence and certain aspects of the organisation have changed significantly during these past 18 years. In 1995 there were 19 people employed by the Association and annual turnover was in the region of £500,000: last year the annual turnover exceeded £5 million and over 70 people were employed.

We are greatly indebted therefore to our funding partners and colleagues from the Youth Sport Trust, the Jack Petchey Foundation, many local authorities and in particular Sheffield City Council, our sponsors and partners in the table

tennis trade, and in particular our colleagues at Sport England for their continuing support and investment. Grateful thanks are also recorded on behalf of our colleagues at the English Schools' Table Tennis Association and congratulations in particular to John Arnold OBE for his richly deserved honour.

The highlight of our year was the Olympic and Paralympic summer of sport which is well documented in this report. It was a privilege to be a small part of this national triumph, and I offer my congratulations to Richard Scruton and his crack team of officials and volunteers for delivering what is now regarded by many as the best ever presentation of our sport at both the Olympics and Paralympics.

Congratulations are also in order for the great medal success enjoyed by our colleagues from the BTTAD and their subsequent funding award for the Rio cycle.

In sharp contrast our post Olympic legacy hopes for the able bodied game were dashed, however, when UK Sport advised the BTTF that its funding criteria could only support those players who could evidence real potential to be ranked 1-8 in the world!

As Sport England now becomes more prescriptive about how its investment should be spent, securing funding

for the ETTA's high performance programmes will be an important challenge in the years to come. As is the total domination of the sport by China: table tennis is the only sport in the summer Olympiad where one country has won all of the available gold medals over two Games as in Beijing and London. China has raised the bar so high there are now three powers in the world game: 1) China, 2) Chinese players representing other countries, and 3) the other countries.

Recent attempts by the ITTF to make the sport more attractive to the media and spectators are not helped when the outcome of the contest is a foregone conclusion. Our former President, the great Johnny Leach MBE who recently celebrated his 90th birthday, still regrets that table tennis is not as attractive to spectators as it was during his career. He was amazed to read in an ITTF Technical Bulletin that there were more than 650 different rubbers and over 50 adhesives to choose from. Too complicated or a rich diversity of choice and opportunity? The arguments will go on but a statistical analysis which revealed that the average rally in many international contests was 2.8 strokes adds credibility to the Johnny Leach point of view and is encouraging entrepreneurs like Barry Hearn to offer an alternative product: The World Championship of Ping Pong, as staged at Alexandra Palace in January supported by expensive high quality TV production values.

So how can we stop the seemingly inevitable advance of China? Well that's

## Staff Based Remotely

### Administration

IT Support Beaming

### Development

National Programme Manager Martin Ireland  
(UK School Games & Young People)  
National Programme Manager Mark Willerton  
(Clubs & Premier League 4 Sport)

### Regional Development Managers

London Harry Peacock  
South & South East Lisa Williams  
South West Chris Brown  
East John Andrews  
East Midlands Carolynn Ryan  
West Midlands Chris Newton  
Yorkshire Shaun Marples (to 05.04.13)  
North East Tony Taylor (to 31.03.13)  
North West Andrea Holt (to 05.01.13 maternity cover)  
North West Tom Browne (from 05.01.13)

### National Coaching

National Talent Manager Jill Parker MBE

### Regional Coaches

London Jane Barella  
South Alison Broe (to 31.05.12)  
South Aled Howell (from 16.07.12)  
South East Craig Bryant  
South West Paul Whiting  
East Stephen Gertsen  
East Midlands Natalie Green  
West Midlands Helen Lower  
Yorkshire Sally Shutt  
North East Matthew Stanforth  
North West Katy Parker  
North West Brian Kean (from 30.11.12 maternity cover)

### Club Support & Coaching Officers

London Robbie Payne-Inglis (to 08.05.13)  
South & South East Adam Proszko  
Shaun Newcomb  
Martyn Reeves (to 30.04.13)  
South West Sam Brown  
Jo Kuzu  
James Lewis  
Adrian Noot (to 27.07.12)  
Michael Naylor  
East Aad Kwakkelstein  
Mark Dare (to 09.11.12)  
East Midlands Chris Turner  
Alex Green (to 07.06.12)  
West Midlands Edward Lynn  
Duncan Stewart (to 17.08.12)  
Yorkshire Shaun Alvey  
John Ainley  
North West Michael Moir

\* Part-Time

## Staff Based in Hastings Headquarters

Queensbury House, Havelock Road, Hastings, East Sussex, TN34 1HF

### Chief Executive

Richard Yule

### Operations

Operations Manager Bill Shearer  
General Secretary Robert Sinclair  
Administrative Assistant Jackie Sands  
Administrative Officer Jennifer Sherwin (to 31.01.13)  
Membership & Ranking Officer Carol Hackett  
Membership Data Andrea Leeson (from 10.09.12)  
Membership Assistant Rachel Brown (to 10.08.12)

### Press and Publicity

Design & Multimedia Manager Adam Collins  
PR & Multimedia Officer James Cornford (to 07.05.12)  
Paul Cornell (from 23.07.12)  
Russell Moore

Web Content & Performance Officer

### Development

National Network Manager Karen Keech  
(Regional Staff & Special Projects)  
National Programme Manager Judy Rogers  
(Volunteering, Diversity & Child Protection)  
Development Support Officer Sheila King  
Project Officer (Adults 16+) Kieron Pelling  
Project Officer (Children & Young People) Sophie Olyphant  
Development Assistant Maria de Battista\*  
(04.06-20.07.12)

### Competitions & Events

National Competitions Manager Diccon Gray  
National Competitions Officer Mat Morris  
Assistant National Competitions Officer Zachery Ferris (from 20.06.12)  
National Competitions Administrator Vanda Jones\*

### Finance

Finance Officer Brian Skinner  
Finance Assistant Amanda Barber  
Kara Heritage (from 17.04.12)  
Kathryn Scully (to 03.08.12)  
Jane Judges\* (from 03.09.12)

### National Coaching

Coach Education Manager Jon Pett (to 06.09.12)  
National Coaching Officer Dave Berriman  
National Coaching Administrator Victoria Crawley  
(from 16.04.12 to 07.03.13)  
Collette Sargent  
National Coaching Assistant Maria de Battista\* (from 03.09.12)  
National Coaching Assistant (intern)

## Staff Based in Sheffield

English Institute of Sport, Coleridge Road, Sheffield, S9 5DA

### Performance

Interim Performance Manager Richard Yule (to 01.09.12)  
ETTA/BTTF Performance Manager Jon Pett (from 07.09.12)  
& Head of Workforce  
National Performance Coach Jia Yi Liu  
National Performance Coach Alan Cooke  
Head Performance Coach Nicky Jarvis  
Performance Co-ordinator Louise Larcombe

the challenge now facing Nick Jarvis, Jon Pett and all ETTA coaches, and will have to be the subject of an article for another day! But there is no doubt that a successful England national team is vital to the future of our sport in the UK.

Drawing to a close, I would like to salute the thousands of brilliant volunteers and technical officials who selflessly give of their time day in day out, year in year out, to organise and administer such an impressive range of activities from local club to national committee level. Many have become good friends and I thank you for the support you have given me during the past 18 years.


In a similar vein, it has been my pleasure to have worked with a team of dedicated

professional staff whose commitment and passion for the job has often been above and beyond the call of duty. Best wishes to you all in your future careers.

I would like to pay a heartfelt tribute to all of the members of the ETTA management teams I have had the honour and privilege to have worked with for 18 years, initially for eight years under the Chairmanship of Alan Ransome OBE, and latterly ten years under Chairman Alex Murdoch. Outstanding individuals one and all, whose unpaid voluntary contribution to table tennis is remarkable by any standards and too often misunderstood and underappreciated. A special note of remembrance here to our late President, Keith Ponting.

Finally, sincere personal thanks and appreciation to Chairman Alex Murdoch, Peter Bradley and Martin Clark, retiring ETTA Limited Directors, for their great contribution to the ETTA and for their guidance, support and friendship to me during the past ten years.

Friends and colleagues all, it has been an honour to have served the ETTA and I wish you and the Association every success in the future.



**Richard Yule**  
Chief Executive



# National Council

## National Council Explained

Each county selects a representative to serve on the Council which decides the policy for the administration of ETTA Ltd.

They meet four times a year to receive reports, minutes of committees and recommendations from the Association's Management Committee.

The county representatives, the National Councillors, listed below have the challenging task of determining policy with reference to all of the ETTA's activities.

They then have the opportunity, via their own County meetings, to explain proposed policy to the member leagues. Valuable feedback is then obtained to reflect members' interests.



## National Councillors and Deputy National Councillors

No	Table Tennis County	National Councillor	Deputy National Councillor
1	Avon	MWJ Lewis	DL Hockney
2	Bedfordshire	Mrs VJ Murdoch	J Alsop
3	Berkshire	C Dyke	A Bruton
4	Buckinghamshire	RR Washington	RJ Hedley
5	Cambridgeshire	BR Freer	Mrs V Parkes
6	Cheshire	Mrs KM Tonge MBE	R Jackson
7	Cleveland	AE Ransome OBE	C Davison
8	Cornwall	Mrs DM Jermyn	TR Vardon
9	Derbyshire	LA Chatwin	Mrs S Deaton
10	Derbyshire	CP Goulding	No appointment
11	Dorset	LT Whittaker	T Hales
12	Durham	GM Wilson	D Bissett
13	Essex	BR Granger	N Brierley
14	Gloucestershire	LJ Smith	Mrs EJ Kirby
15	Hampshire	DB Turner	B P Lamerton
16	Herefordshire	H Jutle	G Stables
17	Hertfordshire	DJ Edwards	JM Barnes
18	Isle of Wight	Mrs E Prean	BR Halliday
19	Kent	N Le Milliere	EK Muhr
20	Lancashire	S Clarke	DD Goulden
21	Leicestershire	MGR Smith	G Sanders
22	Lincolnshire	GE Tyler	D Brown
23	Middlesex	Mrs DM Stannard	M Close
24	Norfolk	RR Drew	No appointment
25	Northamptonshire	KJ Marchant	No appointment
26	Northumberland	J Donnelly	A Hedley
27	Nottinghamshire	M Allsop	B Rimmer
28	Oxfordshire	AR Hughes	J Birkin
29	Shropshire	Mrs J Bevan	Mrs J Powis
30	Somerset	JM Burtenshaw	M Withyman
31	South Yorkshire	R Loxley	JF Galloway
32	Staffordshire	D Sherratt	C Bell
33	Suffolk	PF Fordham	No appointment
34	Surrey	Miss M Fraser	HA Laws
35	Sussex	M Jezisek	M Burman
36	Warwickshire	EJ Williams	M Macfarlane
37	Wiltshire	AL Seward	S Cutler
38	Worcestershire	DA Young	Mrs LA Reid
39	Yorkshire	RB Hudson	B Snowden



## Committee Chairmen

### Operations

Vice-Chairman	John Dignum
Committee Chairmen:	
Board of Appeal	John Freeman JP
Disciplinary	June Watts JP
Honours	Alex Murdoch
Rules	Colin Clemett
Returning & Nominations Officer	Neil Le Milliere
Membership	John Dignum
Ranking Policy	Malcolm Macfarlane

### Finance

Vice-Chairman/Treasurer	Martin Clark
Committee Chairman:	
Trade	Stan Clarke

### Competitions & Marketing

Vice-Chairman	Mike Holt
Committee Chairmen:	
Competitions	Stuart Sherlock
Marketing	Mike Holt
Major Event Feasibility	Mike Holt
Calendar Working Party	Harvey Webb
National Umpires & Referees	Stuart Sherlock
Tournaments	Steve Welch
British League	Chris Dangerfield
County Championships	Les Smith

### Press & Publicity

Vice-Chairman	Nick Heaps (Acting)
Committee Chairmen:	
Public Relations	Nick Heaps (Acting)
Archives & Museums	Nick Heaps (Acting)

### Development

Vice-Chairman	Eileen Shaler
Committee Chairmen:	
National Development	Eileen Shaler
Facilities Panel	Eileen Shaler
Equality	Eileen Shaler
Child Protection	Eileen Shaler
Disability	Eileen Shaler
Regional Chairmen:	
East	Brian Davison
East Midlands	Sandra Deaton
London	Michael Close
North East	Colin Davison
North West	Karen Tonge MBE
South/South East	Brian Lamerton
South West	John Burtenshaw
West Midlands	Neil Wheatley
Yorkshire	Andy Bray

### Coaching/Performance

Vice-Chairman	Peter Charters
Regional Coaching Chairmen:	
East	Maria Ingles
East Midlands	Suzanne Airey
London	Vacant
North East	Jane Durham
North West	Brian Kean
South	Vacant
South East	Ken Muhr/Nick Standen
South West	Val Clack
West Midlands	Vacant
Yorkshire	Alan Lowe
Committee Chairmen:	
Senior Selection Panel	Peter Charters
Junior Selection Panel	Peter Charters
Performance Planning Group	Peter Charters

### Special Projects

Vice-Chairman	Nick Heaps
---------------	------------

## Honorary Life Members & Vice-Presidents

### Honorary Life Vice-President

JA Leach MBE

### Honorary Life Members

LA Chatwin, CJ Clemett, PHM Hillier, MR Holt, LF Landry, MWJ Lewis, AE Ransome OBE, NK Reeve, RC Scruton, LJ Smith, Mrs D M Stannard, H J Webb, JM Wright, DA Young

### Deceased Honorary Life Members

The Dowager Lady G Swaythling, AF Carris, GW Decker, LE Forrest, IGS Montagu, AK Vint OBE, PE Warden, CG Woodcock, M Goldstein, WE Stamp, IC Eyles, FGJ Mannooch, E Reay, LS Woollard, T Blunn, N Cook, G James, C Jaschke, PW Hyde, F Milligan, ME Scott, GR Harrower, CM Wyles OBE, K Watts, GR Yates, LLE Thompson, H Walker, AJH Wickens, AE Upton, EG White, J Jermyn, RJ Crayden, J Holden, KTO Ponting

### Vice-Presidents

Miss JM Adams, M Allsop, Mrs AP Archdale, J Arnold, J Beckley, J Blackband, PR Bradley, JM Burtenshaw, Mrs EM Carrington, PA Charters, MG Clark, S Clarke, M Close, A Cooke, Mrs W Cunningham, C Davison, P Day, Mrs S Deaton, JE Dignum, D Douglas MBE, A Drapkin, K Eliot, J Freeman JP, BR Granger, G Gurney, BR Halliday, TM Honey, R B Hudson, A Hydes, CT Hyland, TF Inge, C Jacques, Mrs G Johns, Mrs A Jones MBE, BP Lamerton,

Mrs C Lewis, P Lewis MBE, J Y Liu, MC Macfarlane, KJ Marchant, AI Marshall, WV Moran, AN Murdoch, J Neslen, Mrs DM Nightingale, Mrs J Parker MBE, LC Pilditch, LH Pilfold, DD Plowes, Dr D Ryde MB, MS, FRC, A Sandford, AL Seward, D Schofield, SE Sherlock, AWC Simons, RH Sinclair, B Skinner, MGR Smith, RJ Stevens, MD Strode, GA Taylor, Mrs KM Tonge MBE, DR Tremayne, GP Trimming, GMG Twiss, DN Tyler, GE Tyler, C Villiers MBE, RR Washington, Mrs JL Watts JP, BRJ Webb, S Welch, M Wolman, R Yates, R Yule

**“The last 12 months have been both exciting and challenging for table tennis with the new Whole Sport Planning process being started. This resulted in an investment commitment by Sport England of £11M over the next four years, a 20% increase from the last WSP Award.”**



# facts & figures



## Tournaments England have played at this season

Date	Tournament
11-15.04.12	European Olympic Qualification, Luxembourg
18-22.04.12	French Junior/Cadet Open, Metz, France
10-13.05.12	World Olympic Qualification, Doha, Qatar
23-27.05.12	China Open, Shanghai, China
30.05-03.06.12	Polish Junior/Cadet Open, Cetniewo, Poland
07-10.06.12	Cadet 6 Nations, Copenhagen, Denmark
13-22.07.12	European Youth Championships, Schwechat, Austria
24-26.08.12	8th Euro Mini Championships, Schiltigheim, France
04.09.12	European Championships Qualification (M), Senec, Slovakia
04.09.12	European Championships Qualification (W), Dessau -Roßlau, Germany
04.09.12	European Championships Qualification, Hull, England
28-30.09.12	Men's World Cup, Liverpool, England
03-07.10.12	Serbian Junior/Cadet Open, Vrnjacka Banja, Serbia
17-21.10.12	European Championships, Herning, Denmark
27.10-04.11.12	World Cadet Challenge, Mangilao, Guam
07-11.11.12	Polish Open, Poznan, Poland
08-11.11.12	Hungarian Junior Open, Tata, Hungary
09-11.11.12	Senior 6 Nations, Guernsey
20.11.12	European Championships Qualification (M), Portsmouth, England
20.11.12	European Championships Qualification (W), St. Petersburg, Russia
23-27.01.13	Austrian Open, Wels, Austria
29.01.13	European Championships Qualification (W), Gateshead, England
05.02.13	European Championships Qualification (M), Sofia, Bulgaria
13-17.02.13	Czech Junior/Cadet Open, Hodonin, Czech Republic
20-24.02.13	Qatar Open, Doha, Qatar
20-24.02.13	Safir International: Swedish Junior & Cadet Open, Örebro, Sweden
12.03.13	European Championships Qualification (M), Jaromer, Czech Republic
12.03.13	European Championships Qualification (W), Hodonin, Czech Republic
06-10.03.13	French Junior/Cadet Open, Metz, France
08-10.03.13	Junior/Cadet Home 6 Nations, Preston, England

## Players who have represented England segregated into levels

### Senior

Andrew Baggaley	Hannah Hicks
Paul Drinkhall	Tin-Tin Ho
Gavin Evans	Karina Le Fevre
Darius Knight	Na Liu
Daniel McBeath	Naomi Owen
Liam Pitchford	Joanna Parker
Daniel Reed	Kelly Sibley

### Under 21

Liam Pitchford
----------------

### Junior

George Downing	Tressa Armitage
Lewis Gray	Emily Bates
Adam Harrison	Jessica Dawson
Sam Mabey	Tin-Tin Ho
Liam McTiernan	Yolanda King
Igor Morais	Lois Peake
Sam Walker	Vicky Smith
Helshan Weerasinghe	Maria Tsaptsinos

### Cadet

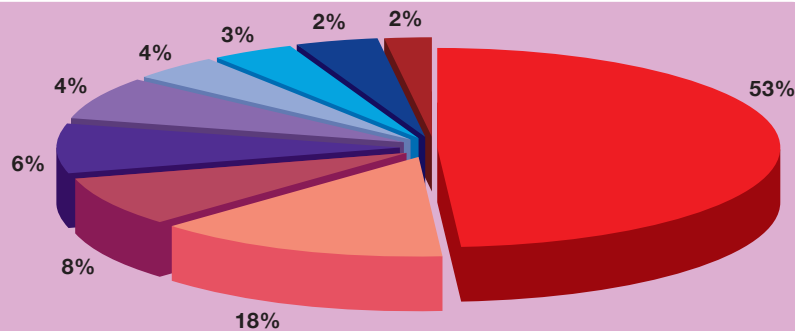
Gabriel Achampong	Emily Bolton
Jack Bennett	Olivia Churchill
Marcus Giles	Tin-Tin Ho
Tom Jarvis	Amy Humphries
Daniel Lawrence	Letitia McMullan
Sam Mabey	Lois Peake
Hugo Pang	Maria Tsaptsinos
Luke Savill	Lucy Zhu
Alec Ward	
Helshan Weerasinghe	

### Mini (U11 & U12)

Harry Dai	Denise Payet
James Smith	

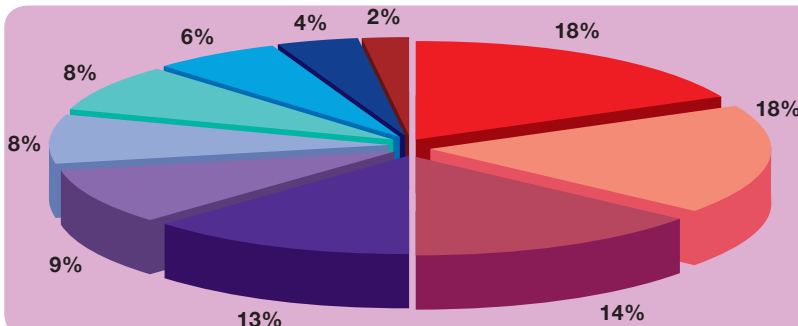
### Income

- Sport England Core Funding - £2,840,000
- Other Development Grants - £953,000
- UK Sport BTTAD Performance - £420,000
- Other - £324,000
- Competitions - £220,000
- Affiliations - £194,000
- ITTF Men's World Cup - £158,000
- Coaching - £127,000
- UK Sport BTTTF Performance - £121,000



### Expenditure

- Other Development Grants - £953,000
- Coaching & Talent Development - £928,000
- Overheads & General Salaries - £733,000
- Development - £702,000
- Capital Programme - £490,000
- Other - £452,000
- UK Sport BTTAD Performance - £420,000
- Competitions - £334,000
- ITTF Men's World Cup - £196,000
- UK Sport BTTTF Performance - £121,000



### Membership Figures

County Associations	39	39	39
Affiliated Leagues	236	235	234
Affiliated Teams	6,857	6,748	6,872
Individual Members*	26,772	27,970	
British League Teams	268	293	292
National Junior League Teams	199	193	215
National Cadet League Teams	215	187	236
County Championships Teams	249	244	249
Licensed Players	2,762	2,935	2,455
PremierClub - New Registrations**	19	16	26
PremierClub - Total**	173	140	162

### Coaching Registrations

Registrations	547	409	453
---------------	-----	-----	-----

### Awards

Qualified Introduction to Coaching	37	28	46
Qualified Introduction to Table Tennis*	34	93	15
Qualified Teachers Award	42	8	41
UKCC Level 1	218	167	192
UKCC Level 2	132	92	26
UKCC Level 3*	10	5	1
Change4Life Sports Clubs (Introduction to Table Tennis)*	743	764	90

\* only available from start date  
 \*\* based on 9 months only

Key: ■ = 2010/11    ■ = 2011/12    ■ = 2012/13

# Annual Snapshot

## June

ETTA President Keith Ponting attended the Queen's Diamond Jubilee ceremony at St. Paul's Cathedral where he met Prime Minister David Cameron who told him about the table he keeps at No. 10.

After meeting the Queen and the PM, Mr Ponting described the occasion as: "truly unforgettable." Shortly after this momentous occasion, Keith sadly passed away and his contribution to table tennis over many years, is itself, truly unforgettable.

In the same month, Team GB Olympians Paul Drinkhall and Joanna Parker helped to get the third year of Ping! underway with a glitzy photo-shoot at Heathrow Airport.

## July

The 2012 Olympic Games kicked off in London to create one of the biggest summers of sport in England in living memory. Table tennis played its part at ExCeL in London's Royal Docklands with England No. 1, Paul Drinkhall, beating Singapore's Yang Zi (world rank 54) to record his best international career win.

Royalty was definitely a theme throughout July with both Queen Elizabeth II and Kate Middleton, Duchess of Cambridge, pictured at the tables during the summer festivities.

Meanwhile, there was another type of celebrity making headlines this month as the Ping Pong Film was released by Britdoc – following the journeys of eight octogenarian table tennis players towards the World Championships in Inner Mongolia.

## August

August saw the end of the Olympic Games with Team GB bowing out in the last 16 of the team events at ExCeL. It will be an experience forever remembered by those involved including the six players: Paul Drinkhall, Liam Pitchford, Andrew Baggaley, Joanna Parker, Kelly Sibley and Na Liu, all the officials and support staff, and, of course, everyone who watched or attended the Games.

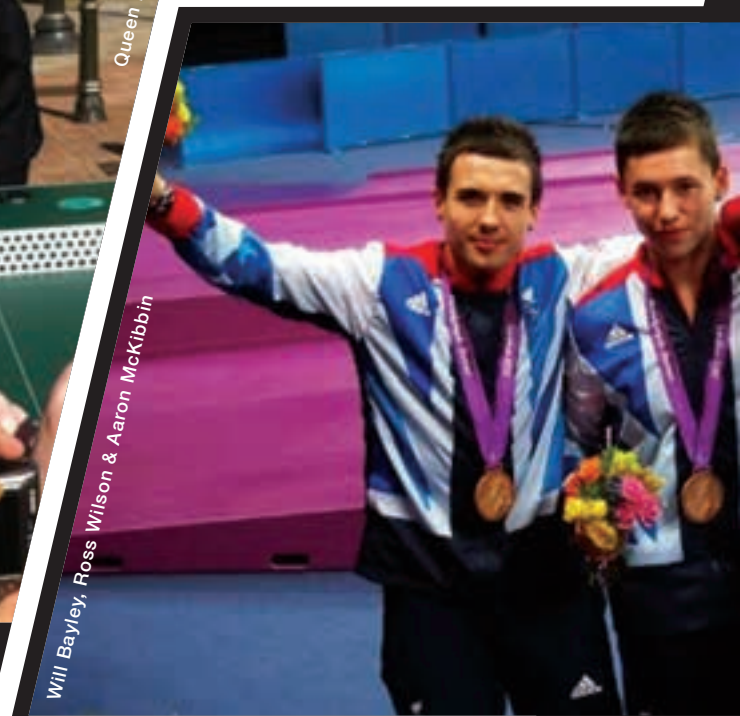
Internet search provider Google also saw fit to highlight the sport with their own 'Google Doodle' this month featuring a couple of table tennis players incorporated into the company's logo. This follows the news that the internet giant became one of a growing number of companies to have table tennis tables in their offices.



Rosemary & Keith Ponting



Queen Elizabeth II



Will Bayley, Ross Wilson & Aaron McKibbin



Team GB



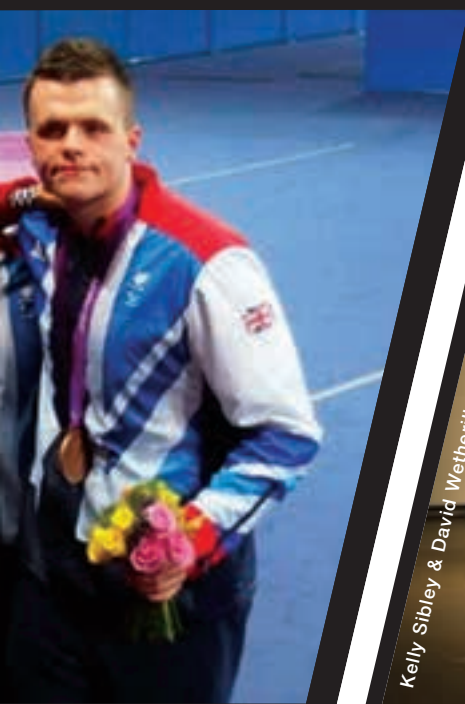
Bounce

## September

The 2012 Paralympic Games took place in September with more resounding success for the Team GB athletes. Will Bayley was the star of the show with a silver medal in Men's Class 7, before later returning to help Aaron McKibbin and Ross Wilson to secure a team bronze in Class 6-8.

Two more medals came for Team GB with Welshman Paul Davies securing an excellent bronze in Men's Class 1, while 'Comeback Queens' Jane Campbell and Sara Head recovered from 2-0 down to beat Italy 3-2 and secure their own bronze medals in Women's Class 1-3.

At the end of the month, the Liebherr Men's World Cup descended upon Liverpool with Paul Drinkhall and Liam Pitchford competing for England in front of a home crowd. China's Ma Long was the eventual Champion following a memorable tournament at the Echo Arena.



## October

Europe's first purpose-built 'Social Ping Pong Club' was launched in London. 'Bounce' opened on the 1st of the month on the same site where table tennis was invented back in 1901 and boasting a restaurant, bar and 13 custom designed Butterfly Ping Pong Tables including the London Olympic 2012 Table and World Championship Table.

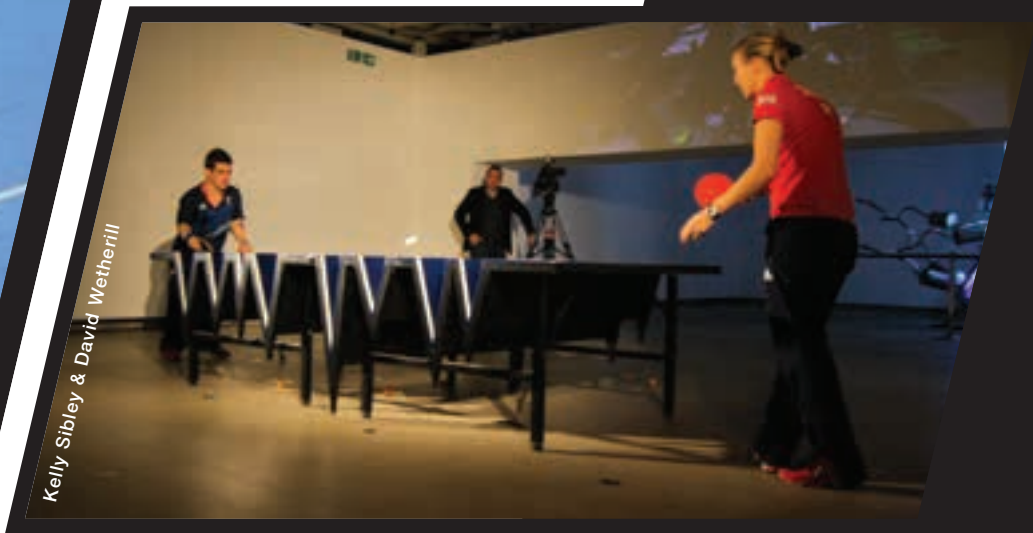
Meanwhile Liam Pitchford lived up to his 'giant-killing' tag by beating Robert Gardos (AUT, 32) 4-2 at the European Championships in Denmark where the 19-year-old made the last 32.

Also in October, Tin-Tin Ho became the first English girl to be selected for Europe in the World Cadet Challenge where she eventually finished sixth in the singles while helping Europe to make the team final.

## November

In November the social side of table tennis was back in the spotlight as the 'Art of Change' exhibition at Southbank Centre's Hayward Gallery featured Chinese artist Wang Jianwei's 'Surplus Value' corrugated table tennis table.

With the Sky Sports cameras in attendance, Team GB stars Kelly Sibley and David Wetherill 'challenged' the table for a feature that appeared on Sky Sports News' Get Involved series alongside Andrew Baggaley's school exhibition.



Kelly Sibley & David Wetherill

## December

Sport England and UK Sport announced their four-year funding packages for 2013-17 and the ETTA is set to benefit from a 20% boost from Sport England.

Although there was no elite funding from UK Sport, the British Table Tennis Association for People with Disabilities was awarded an additional £1m, taking the total past £2.7m.

A group of artists from Liverpool created the 'Noisy Table' as the first project of the FACT Connect programme. The table, which emits a variety of sounds following the balls' vibration upon impact, would be on display for three months of innovative excitement.

There was also good news for Ping! Leicester, which was awarded the 'Event of the Year 2012' title at the Leicester Sports Partnership Trust awards.



## January

2013 began with the exciting news that England No. 1s Paul Drinkhall and Joanna Parker had got engaged over the holiday period. Meanwhile, John Arnold, President of the English Schools' Table Tennis Association, had been recognised in the Queen's New Year Honours List with an MBE for Services to School Sport.

'Ping Pong' also found fame at Alexandra Palace with Chris Doran reaching the semi-finals of the World Championships of Ping Pong, held in London in front of live Sky Sports cameras.

Finally in January, David Wetherill's Paralympic 'Wonder-shot' was voted as the fourth greatest moment at the 2012 Paralympic Games by the International Paralympic Committee.



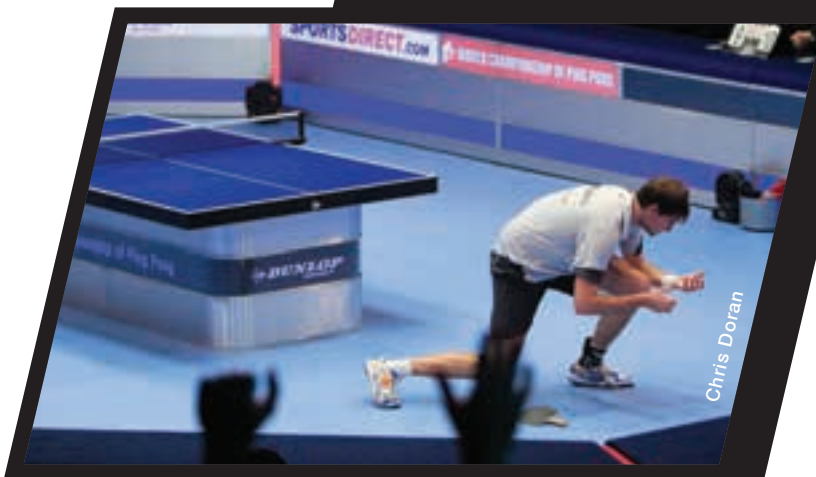
Alan Cooke

## February

Ping! continued its high-profile success by being short-listed for the 'Sports Participation Event of the Year' in the Sports Industry Awards after reaching over 300,000 people during the summer of 2012.

Also in February following a successful campaign and the first challenge for ten years, Andy Seward, the National Councillor for Wiltshire, was elected as the new Chairman and he will take over from the current Chairman, Alex Murdoch, after the AGM on 13 July.

Unfortunately, the month was tinged with sadness as both former World Champion Zhuang Zedong, and the star of the Ping Pong Film, Les D'Arcy, passed away during this period.



Chris Doran

Les D'Arcy

## March

March began with the 54th English Senior National Championships where 19-year-old Liam Pitchford won his first-ever Men's Singles title over four-time Champion Paul Drinkhall.

Twenty-four-year-old Kelly Sibley retained her Women's Singles crown following a dramatic 4-3 win over Joanna Parker. Meanwhile, there were maiden National Under-21 titles for both Sam Walker and Tin-Tin Ho.

March also brought the announcement that ETTA Chief Executive, Richard Yule, would retire at the end of May. His retirement brought to an end the 18-year tenure of one of the ETTA's hardest working and widely respected Chief Executives.



Helshan Weerasinghe

## April

There was almost a historic 'royal rumble' in April as Pippa Middleton challenged Mayor of London, Boris Johnson, to a game of 'ping pong' after claiming she once played at a National Championships.

Instead it was 14-year-old Tin-Tin Ho who re-wrote the history books after becoming the first-ever English girl to reach the No. 1 spot in the European table tennis rankings.

Fellow junior England star Helshan Weerasinghe also made the headlines with an appearance on Channel 4's Sunday Brunch programme by partnering former Olympian Matthew Syed.

## May

England's No. 1 junior Sam Walker had a month to remember in May following several high profile appearances.

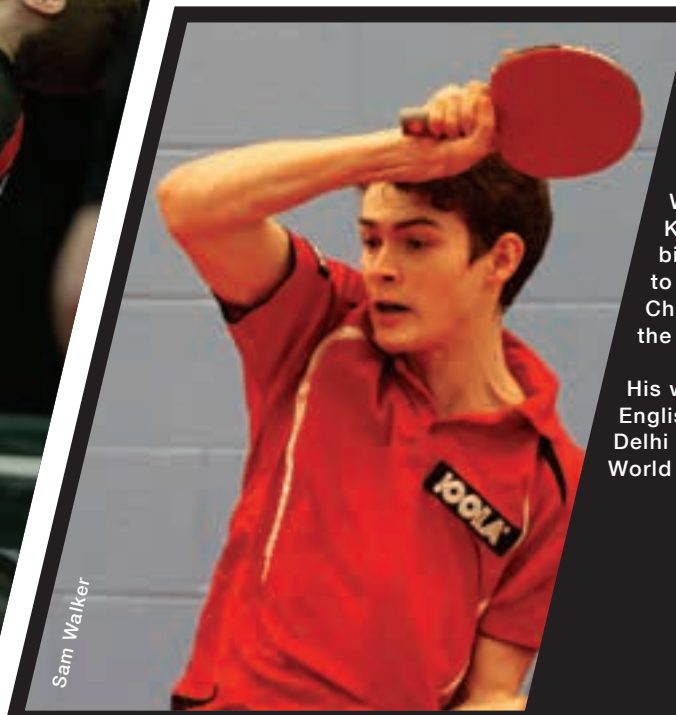
While the youngster made his screen debut on Sky Sports' Soccer AM show, where he faced former Bolton Manager Owen Coyle, he also made his senior England debut when he played at the Commonwealth Championships in India.

Walker, who beat India's Sharath Kamal Achanta (WR 69) on his birthday, helped England's men to a team bronze, while alongside Chris Doran he also won silver in the Men's Doubles.

His were two of five medals that the English players picked up in New Delhi before they headed off to the World Championships in Paris.



Liam Pitchford



Sam Walker



# Departmental Reports

## I. Operations

### 1.1 Staff Changes

#### 1.1.1 Regional Development Managers

- Shaun Marples left his role of RDM Yorkshire on 5th April 2013 to become a Performance Pathway Coach for The British Table Tennis Association for people with Disabilities (BTTAD).
- Tony Taylor retired from his role of RDM North East on 31st March 2013.
- Tom Browne took over from Andrea Holt as RDM North West from 7th January 2013 for maternity cover.

#### 1.1.2 Regional Coaches

- Alison Broe left her position as RC South on 31st May 2012 and Aled Howell took over from 16th July 2012.
- Brian Kean took over from Katy Parker as RC North West from 30th November 2012 for maternity cover.

#### 1.1.3 Club Support & Coaching Officers

- Robbie Payne-Inglis left his London post on 8th May 2013.
- Martyn Reeves left his South West post on 30th April 2013 and Adrian Noott left on 27th July 2012.
- Mark Dare left his East post on 9th November 2012.
- Alex Green left his East Midlands post on 7th June 2012.

- Duncan Stewart left his West Midlands post on 17th August 2012.

#### 1.1.4 Operations Department

- Jennifer Sherwin retired from her position as Administrative Officer on 31st January 2013.
- Rachel Brown left her role as Membership Data Administrator on 10th August 2012.
- Andrea Leeson joined on 10th September 2012 in the role of Membership Data/Ranking Administrator.

#### 1.1.5 Press & Publicity Department

- James Cornford left the role of PR & Multimedia Officer on 7th May 2012 and was replaced by Paul Cornell on 23rd July 2012.

#### 1.1.6 Competitions/Marketing Department

- Zachery Ferris joined the team as Assistant National Competitions & Events Officer on 20th July 2012.

#### 1.1.7 Finance Department

- Kara Heritage joined on 17th April 2012 as a part-time Finance Assistant.
- Kathryn Scully left the position of Finance Assistant on 3rd August 2012 and was replaced by Kara Heritage (now full-time).
- Jane Judges joined on 3rd September 2012 as a part-time Finance Assistant.

#### 1.1.8 Coaching/Performance Department

- Richard Yule relinquished the additional role of Interim Performance Manager on 1st September 2012.
- Jon Pett changed roles on 7th September 2012 from Coach Education Manager to ETTA/ BTTF Performance Manager & Head of Workforce.
- Maria de Battista joined as a National Coaching Assistant (as an intern) on 30th September 2012, having also worked a few weeks in June/July 2012 as Development Assistant.

### 1.2 Honours

- #### 1.2.1
- As adopted at the 1990/1 Annual General Meeting, the list of honours bestowed on members will be announced at the Annual General Meeting. A list of awards issued this administrative year is shown towards the end of this report.

### 1.3 Board of Appeal

- #### 1.3.1
- We have not had any appeals during the year and no appeals are outstanding.
- #### 1.3.2
- The 'Terms of Reference' of the Board have been rewritten in more specific detail but there is no change. An amended Appendix 'O' (Board of Appeal Regulations) showing the 'Terms' is in draft.

### 1.4 Disciplinary

- #### 1.4.1
- The Disciplinary Committee



- met on two occasions, both times for allegations regarding unacceptable behaviour of junior/cadet players at tournaments.
- 1.4.2 Correspondence received on the most recent matter gave the Disciplinary Committee much cause for concern, appearing to reveal a culture of bullying and intimidation not only of the young players concerned but by some of their parents.
- 1.4.3 The Disciplinary Committee has referred the matter to the National Council. They feel that if protocols exist to enable officials to deal with bad behaviour by anyone, then they are not being implemented firmly enough. If they do not, then they should be drawn up so that any official placed in a difficult situation knows how to deal with the matter.
- 1.4.4 Finally, it remains a matter of concern that we continue to have suspensions relating to sexual offences.

**1.5 Individual Membership**

- 1.5.1 In total there are now around 42,000 individual registrations on the ETTA CRM system. Of these, some 28,000 paid their membership fees in the season 2012/2013, an increase of 1,500 over the previous season. In addition we have some 800 honorary members. However, this reveals around 30% “churn” across the database in the first three years, which may be attributable to the number of cadets and juniors who join and leave after a single season.
- 1.5.2 Throughout the current season, we have been adding increased functionality to the system and that work is now complete. Given the commitment we made to Table Tennis 365 in April 2011 to build a front end user interface (Membership Manager and League Manager) and the success that these systems have enjoyed, we made a decision at the start of the 2011/12 season to replace the Connect “back end” system with a TT365 enhanced system, to remove all future compatibility problems. This gives us a platform which is future proofed for the next four years to cope with expansion. As part of this development, members and volunteers will have the following benefits to look forward to over the coming season:
- Much more regular and frequent email contact with

the membership, using a new email system, which will enable us to purchase email credits at a much lower cost, around 0.07p per email. We will also benefit from purchasing larger volumes of email credits. The system we intend to use has a number of really good features that will allow us to provide a proper subscription service to our members, where they can declare who they are happy to receive emails from. Other features are things like analysis of campaign activity plus bounce rates. This data can be consumed by the membership system and used to clean up database records when email addresses expire, and gives the members full control over what they receive by email and from whom. The system will also allow group emails to be sent at a League, Club, County and Region level.

- A new ETTA management suite (which will be linked with ETTA membership system) will provide rich searching, reporting and maintenance of roles and qualifications for ETTA members. This will provide the basis for an active workforce development system allowing members to receive information about courses and development opportunities that are relevant to them. Roles Manager will be deployed to league manager and future club, county and region manager toolkits as a free tool, provided to these organisations by ETTA and powered by TT365, the same principle as membership manager. The management suite will also be deployed for the use of staff at ETTA head office.
- All the amendments above will serve the traditional table tennis market with immediate effect but, in the longer term, will also support the expansion of recreational Ping Pong, through the provision of a range of websites (encompassing Membership Manager/League Manager) for the following markets:
  - Schools
  - Workplace (including single site, multiple site)
  - Doorstep clubs
  - Universities and colleges
  - U3A

- Care sector
- Leisure centres
- Any other key partner/organisation which operates single or multiple sites and which can introduce a group of people to the game.

1.5.3 The marketing campaign to promote both the ETTA endorsed League Manager and our Membership Manager system continues to make inroads. There are now over 300 leagues and clubs using Membership Manager and over 100 leagues using League Manager.

1.5.4 There is a “Rule Change” proposition to change the start and end dates for the season from the current system to a season commencing on 1st August and ending on 31st July, each year. If this proposal is passed at the AGM, then renewals for the new season will be available from the day following the AGM. It is still the responsibility of every individual member to renew in plenty of time for the new season’s play. Again, we will be encouraging all league and club secretaries to encourage their



members to renew directly with the ETTA, preferably online, as this is the most cost effective route. Where a member has supplied a current email address, they will be reminded about the steps for membership renewal.

1.5.5 The Membership Committee met every quarter as part of each National Council weekend. Other work was carried out by the Development and Task sub-groups on specific issues. Work was also undertaken to specifically review the ‘membership’ criteria for Organisations in Good Standing (OIGS). There are two areas of membership that require both nurturing and development: one is our current members of

clubs and leagues, and the other is the growing band of social/recreational players, such as those introduced to table tennis through the advent of Ping!

1.5.6 Over the first three years of Individual Membership, we sent out around 80,000 membership cards, using a personalised card and letter. For the season 2013/2014 we will be moving to a slightly different card, but containing the same information. The cards and associated letter will be digitally printed from now on, which brings two different benefits. Firstly, the unit costs are reduced and secondly, we will be able to print cards in any size of batches without impacting the cost. This means that we will now be able to get cards into the hands of members more quickly because of the digital process.

**1.6 Player Licence Scheme**

1.6.1 The figures for 2012/13 are:

	Cadet	Junior	Senior	Total
Player	865	432	1,158	2,455

**1.7 Rules Committee**

1.7.1 The main task of the Committee this season was to prepare proposals for changes to the rules concerning affiliation, for two reasons. The first proposed change would adopt the principle of a "Membership Year", a concept developed by the Membership Committee to avoid the anomaly whereby a player affiliating in one year can continue to play competitive table tennis for several months of the following year without paying a further fee. The second proposed change would bring the procedure for notifying proposed affiliation fee changes into line with that for Rule Change Propositions and so avoid the difficulties that arose in 2011/12.

1.7.2 As part of this revision, the opportunity was taken to divide the current rules on affiliation, which are all in one section, into three sections, covering separately the affiliation of organisations, the affiliation of individuals and affiliation fees. It is believed that this will make the relevant rules easier to find. As a further step in simplification, proposals will be made to the AGM to delete those sections of the Company's Articles of Association, which relate to the transfer of assets and responsibilities from the former

ETTA to ETTA Limited in 2001, which are now redundant.

1.7.3 Regulation changes agreed at the 2012 British League and County Championship Annual Conferences were incorporated in the appropriate Appendices, and later in the season Regulation Change Proposals for the 2013 Conferences were drafted on behalf of the responsible committees.

1.7.4 Advice on questions of rule interpretation was given on request to ETTA committees and officials as well as to member organisations and individuals.

**1.8 Ranking Committee**

1.8.1 The ranking process has once again functioned admirably despite pressures on the Ranking team from Individual Membership.

1.8.2 Jennifer Sherwin and her assistants performed admirably as usual, and Carol Hackett has seamlessly managed the switch to her leadership on Jennifer's retirement.

1.8.3 The rate of error continues to be extremely low considering the volume of data to be manually processed.

1.8.4 The process has continued of importing results created for the website into the Ranking programme. All National Championships and British



Leagues are processed this way.

1.8.5 Concerns are emerging on the new ranking system as to its implementation on a database level and in the method of allocating changes to ratings. The parallel run is still pending.

1.8.6 The major reason for implementation of the new system has been removed with the ranking system upgrade for 2012/13 in that:

a) Licence numbers are no longer restricted to 4 numerics. They can now be any number of digits from 1 to 9 in length;

b) A separate cadet ranking list has been implemented.

1.8.7 The policy to aid competitiveness by reducing ranking points by 10% each season seems to be having the desired effect and will continue.

**1.9 Organisations in Good Standing**

1.9.1 The following organisations have been in Good Standing for the last year:

- Royal Air Force TTA
- British Table Tennis Association for People with Disabilities
- English Schools' Table Tennis Association
- Ambition (formerly 'Clubs for Young People')
- Elite Hardbat Competition
- Lancashire and Cheshire TTL
- Maccabi GB Table Tennis
- Police Sport UK Indoor Sports Section
- Royal Navy TTA
- UK Deaf TTA
- Veterans' English Table Tennis Society
- British Universities and Colleges Sports

**1.10 Obituaries**

1.10.1 The following friends and colleagues have died during the past year:

- Keith Ponting: President of ETTA, Honorary Life Member 1983, former Management Board member and member of the National Team Competitions and British League Committees for many years. Also was President, General Secretary and National Councillor for Devon County TTA.
- RE (Bob) Griffin: Vice-President of Gloucestershire County TTA and a former international player.
- Les Jones: Level 3 Coach in the North West.
- Jack Reeves: Life Member, past President, Chairman and Vice-Chairman of the Gloucestershire County TTA.
- Les D'Arcy: Well known player in the Veterans' English Table Tennis Society.
- Phil Gower: President of Essex County TTA and former Chairman and Secretary. Qualified as an International Umpire and International Referee.
- Stephen Chambers: UKCC Level 2 Coach.
- Ken Stanley: Former England International Player.



- Ronnie Baker: Former International Player.
- John Hardcastle: Chairman of Doncaster TTL, qualified as a National Umpire and organiser of ETTA events.
- Paul Cornwall: Vice-President of Cambridge TTL.
- 'Pinkie' Barnes: former England International Player and married to character actor Sam Kydd.
- Richard Hiskey: Former Chairman of Chelmsford TTL.
- Fred Ingram: Cornwall County TTA Match Secretary for a number of years and qualified as a County Umpire in 1988 and as Tournament Umpire in 1998. He was also for a time the County Umpire Secretary for Cornwall.
- John Preat: Former ETTA Chairman from 1986/7 to 1990/1, Chairman of Isle of Wight TTA, and former National Councillor (Isle of Wight).
- Terry Boxall: Buckinghamshire County TTA, County Umpire Secretary and qualified as a County Umpire.
- Keith Fellows: Represented England Veterans and Leicestershire County as a senior and veteran player.
- Jim Beckley: Vice Chairman Public Relations, Regional Co-ordinating Committee Publicity North West, Regional Committee Publicity, Marketing Committee, Cheshire County TTA Press Officer, National Championships Committee Member and Archives and Museum Committee Chairman.

**1.11 General**

1.11.1 It has been an interesting, challenging and rewarding ten years for the outgoing Vice-Chairman Operations, and

2012/13 has been no less challenging with the ongoing need to keep up-to-date with technology and requirements of our funding partners.

- 1.11.2 Individual Membership has been the most significant and major administrative development for many years, and thanks to useful feedback from members and trials by a number of leagues, we have been able to upgrade the system each year to increase functionality and make the system more user friendly. Chris Dangerfield of TT365 deserves high praise and recognition for his work on developing the web based 'tools' that have proved so helpful to leagues and clubs.
- 1.11.3 The Rules Committee had another busy year and again dealt with a number of requests from committees as well as putting together Rule Change Propositions for the AGM. This year there is an important proposal for adopting an official 'Membership Year' to bring all levels of membership into line, and to simplify the application and renewal processes.
- 1.11.4 The Honours Committee has faced the usual challenges of determining the list of award winners for the year, with the additional responsibility in the latter part of this year of proposing a candidate for President, following the unexpected death of Keith Ponting.
- 1.11.5 The Disciplinary Committee and Appeals Board have dealt with a variety of matters during the year, and thanks are due to the respective committee chairpersons and their teams in handling some difficult issues.

- 1.11.6 The Operations team has seen some staff changes throughout the year, particularly in the Membership team with the retirement of Jennifer Sherwin. However, Carol Hackett has stepped into the breach very admirably and has been well supported by Andrea Leeson.
- 1.11.7 Once again the whole Operations team, together with the many volunteers across the various committees, have worked diligently throughout the year on behalf of all members, and our thanks are extended to them.

**2. Finance**

**2.1 General**

- 2.1.1 2012/13 was the fourth and final year in the Whole Sport Plan 2009/13 and with turnover of £5,345,399 again exceeded that of any previous year. It should be highlighted that £3,353,843 grant expenditure has once more been financed by Sport England in the main from core funding that as a consequence of our performance in the Active People Survey was further enhanced with additional funding of £280,580. The Jack Petchey Foundation also made a contribution that provided equipment for London schools together with a fresh agreement that has been established for 2013/14.
- 2.1.2 An election commitment in 2003 to establish a financial policy not to suffer deficits in any given year has been fulfilled as a consequence of tight budgetary control whilst being mindful of utilising Government money from which large surpluses would not be appropriate. This year is no exception with a surplus of

£28,639 that follows those of the previous nine years of our term in office.

2.1.3 Our net asset base rising is now £593,936 compared to £303,305 at the end of the 2003 financial year. We are, however, still so reliant on Government and Lottery funds that in the event of changes at Whitehall or indeed Sport England support, they would have a marked effect on our programmes. On current level of expenditure we are a long way off being self-sufficient and that we therefore need to generate more income from within a sport that has for too long been considered cheap.

2.1.4 Whilst UK Sport through their 'No Compromise' policy have not funded any sport that is not an Olympic medal contender, the good news is that following the submission of our 2013/14 Whole Sport Plan and prolonged discussions with Sport England we have, subject to meeting certain KPIs and other conditions including a structural and staffing review, secured £11,000,000 over the next four years. This is an unprecedented level of funding for table tennis. However, to maintain a level of programming for our senior, junior and cadet elite players will require careful control in other areas of expenditure, particularly as funding is allotted to various sectors that are ring fenced.

2.1.5 The monitoring of the substantial level of expenditure in such a variety of cost centres requires

a great deal of expertise and falls in the first instance on the shoulders of Brian Skinner and his hardworking staff of Amanda Barber, Kara Heritage and Jane Judges. Thanks must go to them all, as without their help the task of Treasurer would be that much more difficult. Huge thanks are also due to Richard Yule and Alex Murdoch for their contributions, particularly over the past ten years, without which we would not have enjoyed the confidence shown to us for Sport England.

2.1.6 A detailed analysis of the accounts can be found on pages 1-14 of the Statement of Accounts, which provides a raft of information far in excess of statutory requirements or that of most sports governing bodies.

## 2.2 Trade Committee

2.2.1 Elected annually by National Council, all members received a vote of confidence and were re-elected for 2013/14: Stan Clarke (Chairman), John Burtenshaw, Tony Chatwin, Colin Hyland and Ron Washington, with support from staff members Rob Sinclair and Richard Yule.

2.2.2 Despite a difficult economic climate, the Association is pleased to acknowledge the traders who continue to support our events and activities. In particular we are grateful to our colleagues at Bribar Table Tennis and Joola, Germany, for the excellent England Team sponsorship 2009/13 which provides free supply of clothing and equipment for all England

teams and a significant cash sum. This valuable sponsorship comes to an end during 2013 and is available for a further term.

2.2.3 The Association also acknowledges the support of Bribar and Ransome Sporting Goods who jointly supplied the equipment required to stage our extensive competition programme during 2012/13. The Association made a contribution to these traders to address the increasing costs of fuel, transport and labour. The Association is also pleased to acknowledge support for the following Official Ball Supply Contracts for 2012/13 - Butterfly, British League, County; TT Links - Junior and Cadet National Leagues. We are also grateful to colleagues at Ransome Sporting Goods and Butterfly for their support with the Butterfly Skills Programme.

2.2.4 An increasing area of business for the committee involved issuing tenders for the procurement of significant volumes of equipment from the trade to supply various participation programmes generated by the Development Department and funded by Sport England and other partners: Change for Life Programme, Outdoor Tables for Ping Birmingham/Hull, also Jack Petchey London Schools' TT and universities programmes. These projects represent many thousands of pounds of investment of public money into our sport and mark an important shift in the relationship between



the Association and the trade.  
 2.2.5 Finally, our grateful thanks go to the following traders for their support across a range of ETTA publications including advertising on the ETTA website: Butterfly, Tees Sport, Joola, Bribar, Lion, Stiga, Gerflor, Cornilleau, Thorntons Sport, TLinks and Table Tennis Topspin.

### 3. Press & Publicity

#### 3.1 Staff

3.1.1 The success of ETTA communications is dependent on a hybrid team comprising a small staff contingent and an army of volunteers working on events throughout the country. Based in Hastings, but attending major events, the three-man staff team is Adam Collins (Design & Digital Media Officer), Russell Moore (Web Content & Performance Officer) and Paul Cornell, who joined the ETTA in July 2012 (Press and Marketing Officer).

#### 3.2 Olympic Profile

3.2.1 The increased media coverage for table tennis during the Olympic and Paralympic Games has resulted in a higher profile for the sport and, anecdotally, a significant increase in prospective members at many of our bigger clubs.

#### 3.3 Newspapers

3.3.1 Without doubt, the biggest media coverage was achieved around the Olympic and Paralympic Games, the hopes and ambitions of GB squad players being reported in great detail across both national and regional press.

3.3.2 Social and recreational table tennis remains a popular topic for feature editors and the launch of the Bounce London bar and restaurant in September generated significant coverage, as did the World Championships of Ping Pong held at Alexandra Palace in January. As an example, the Independent ran a two-page article, 'Ping Pong comes home - in style!', focused around social ping pong and its increasing popularity.

3.3.3 Towards the end of December, Sport England and UK Sport funding announcements generated mixed national press coverage for our sport with articles comparing the increase in participation funding with a decline in funding for 'elite' and Olympic competition.

3.3.4 The National Championships in Sheffield and European qualification matches for England's men's and women's teams - in Hull, Gateshead and Portsmouth - were picked up with strong coverage in the local and regional press.

#### 3.4 Television

3.4.1 Every session of the Olympic table tennis tournament was broadcast live by the BBC whilst the Liebherr Men's World Cup, in September, and World Championship of Ping Pong, in January, were covered extensively by Sky Sports.

3.4.2 England international matches and the Liebherr Men's World Cup received strong pre-event coverage with interviews, previews and features by the regional television companies.

#### 3.5 Live Streaming

3.5.1 Matches from the Men's World Cup, Senior National Championships and Junior & Cadet 6 Nations events were captured and live streamed to the internet, with subsequent video uploading to the ETTA's YouTube channel.

#### 3.6 Websites

3.6.1 During the Olympics table tennis was covered live on the BBC sport website.

3.6.2 There have been several developments within the ETTA's web estate, the most noticeable being where we have:

- Created satellite sites to deliver information on the Olympic Games, Paralympics and Liebherr Men's World Cup. These have provided latest news and results with detailed player profiles and information on venues and schedules.
- Created a satellite site to promote the concept of Instant Ping Pong!
- Increased news reporting and added numerous video interviews to the British League satellite sites.
- Reformatted main website sections to have similar 'feel', i.e. coaching and development now have latest news boxes.
- Changed the NURC navigation to 'Umpires' for more obvious access to those outside of the sport.
- Significantly improved the operation of Spotlight for finding venues or events with over 4,000 playing venues, including outdoor tables, now available.

- Added a bi-monthly development newsletter and a NURC newsletter archive.
- Incorporated analytics for website visitor statistics and measurement of advertising effectiveness.

#### 3.7 Social Media

3.7.1 Our use of social media continues to be a major success in communicating with ETTA members, the media and our target audiences of young people. It allows us to provide additional news channels, where we can direct followers to specific website articles and interact directly with them.

3.7.2 We have expanded our 'live' reporting service for major events through Twitter and Facebook. These popular services now provide previews and 'live' reports from World Tour events, domestic internationals, Grand Prix tournaments, National Championships and British League matches.

3.7.3 We have untethered Twitter and Facebook and, over the past year, have introduced new Twitter feeds for each region and for the British League. This, coupled with the increased service we are providing, has considerably increased our Twitter following such that we are now close to target NGBs such as Badminton England.

3.7.4 The ETTA's YouTube account now has close to 2,000 subscribers. This year we have uploaded over 60 videos of matches from the National Championships, Cadet and Junior Internationals and Liebherr Men's World Cup.

3.7.5 Our Flickr photo libraries continue to grow with over a thousand new images added this year from the Junior and Cadet Masters, Sainsbury School Games, National Championships, international matches, Liebherr Men's World Cup and British League competitions.

#### 3.8 Archives and Museums Committee

3.8.1 In the Olympic year we were proud to receive a copy of Colin Clemett's 'From London to London' about the early history of table tennis and a latter section on Olympic results. Other Olympic memorabilia include a signed pennant by the GB squad, stamps and a coin. Many other donations have also been received - books, programmes, magazines,



photographs, ephemera, ties, pin badges, bats and balls.

- 3.8.2 Research has been undertaken both internally and for other interested parties. Enquiries as far afield as the USA, Sweden and Israel have been satisfied. Following an interesting visit to Liverpool University, to sort and search archive material held there, it was possible to supply ITTF with some missing records from early English Open Championships.
- 3.8.3 Domestically, Colin Clemett has been concentrating on producing a comprehensive results archive for all National Championships, at all levels. Additionally he is working on table tennis history from 1921-1927, during the days of the resurgence of the Ping Pong Association until the foundation of ETTA.
- 3.8.4 Further archival records are being created giving details of all senior England internationals playing records in major championships and international matches as well as a breakdown of results by competition and year. This work is still in its infancy but is being expanded upon continually. It helps complement the 'Who's Who of ETTA' compiled by Diane Webb.
- 3.8.5 Cataloguing and scanning continues in Hastings but adequate storage is still unresolved. An Archives Section on the ETTA website is still under consideration.
- 3.8.6 Many thanks go to all who have contributed to our history by way of information and/or artefacts and ephemera. Much appreciation also goes to committee members, Colin Clemett, Rob Sinclair, Mike Smith and Diane Webb for their continued work and commitment.

## 4. Competitions & Marketing Department

### 4.1 Introduction

- 4.1.1 The Department is responsible for all competitions including our National Championships and English international events as well as the full domestic programme of British League, County Championships, Cadet and Junior National Leagues, Grand Prix and a number of other events. The highlight of the season was of course the Liebherr Men's World Cup event held at the Echo Arena in Liverpool, last September.

### 4.2 2012 Liebherr Men's World Cup

- 4.2.1 The Association was privileged to stage the 2012 Liebherr Men's World Cup from 28th-30th September 2012 at the superb Echo Arena on Albert Dock in Liverpool, possibly the best venue that we have used in recent times. The venue is capable of seating approx. 10,000 spectators for live concerts and up to 3,500 people for the layout we used. The facilities were excellent providing us with not only two wonderful show courts but also with practice and "Come and Try it" areas as well as a trade area.
- 4.2.2 We were fortunate that the Arena staff were extremely supportive of the event, and our thanks to the City of Liverpool and the Echo Arena for providing a fully fit-for-purpose sports arena at virtually no cost to the Association.
- 4.2.3 The quality of the players invited was excellent, with 10 of the top 20 players in the world including China's Ma Long & Xu Xin, and European favourites Timo Boll and Dimitri Ovtcharov. We were also able to agree with ITTF that two English players Paul Drinkhall and Liam Pitchford would compete.
- 4.2.4 A huge prize fund of \$150,000 was up for grabs with Ma Long collecting the winner's cheque for \$45,000.
- 4.2.5 We budgeted for the event to cost the Association £20,000 which was similar to the costs for the two English Opens in Sheffield. In the event we were a further £7,500 away from budget, mainly brought about by poorer than budgeted ticket sales (see below) and additional costs originally not budgeted for venue dressing for a printed screen and additional carpeting for main arena.
- 4.2.6 Tickets sales were disappointing with just over 4,200 sold, including sponsors, guests and VIPs. The take-up of free tickets to Counties, Local Leagues and PremierClubs was higher than for past events. We promoted this event far earlier and more often than any other in recent years but still failed to draw in larger audiences. Echo Arena did however advise us that our figures were better than for some other sports events held there in recent times.
- 4.2.7 An event of this stature cannot be successfully staged without a considerable number of technical officials and volunteers.

Karl Jindrak (Austria) was the appointed ITTF Competition Manager with Petr Bohumsky (Czech Republic) and Karen Tonge (England) as Referee and Deputy Referee. Stuart Sherlock acted as Technical Liaison with ITTF. All the Umpires/Racket Control and Doping Staff did an excellent job.

4.2.8 Diccon Gray, our Tournament Manager, oversaw the event



once it had commenced and was supported by a great team of volunteers and staff members including a significant contingent from the Liverpool League.

4.2.9 The event was filmed and televised for Sky TV in the UK as well as ITTF live streaming and full updates on the ETTA website and social networks. The event was shown as highlights on Sky in two programmes shown 17 times from 14th-29th October. Highlights were shown each night of the event on Eurosport 2. China's CCTV5 showed live coverage in China, also some coverage in Japan and Singapore. The total worldwide audience was in the region of 50 million. The estimated value of that TV coverage across all the sponsors was over \$68 million according to data from ITTF.

4.2.10 The ideally located Jury's Inn Hotel was the base for all the players, officials and sponsors, providing good access to the venue, a mere 50 metres away. Being located on the Albert Dock meant that players and officials had the chance to sample the cultural delights of Liverpool.

4.2.11 The ITTF was very pleased with the event especially the venue and location, and took the trouble to tour the whole complex with a view to other major events being offered to Liverpool, via ETTA, in the future.

4.2.12 The Association can be proud of this event, which was first class in all areas, with the only disappointment being the low attendances.

4.2.13 Finally sincere thanks to the event sponsors, Liebherr, Donic, Double Happiness, Gerflor and Topspin Sports; all traders, Port Designs (gift bag) and J Sainsbury (water provision); John Moore and Emma McHarrie of Echo Arena, Diccon Gray, Stuart Sherlock, Paul Cornell, all ETTA and the wonderful volunteers; great job well done.

### 4.3 Competitions Committee

4.3.1 The newly established committee met four times over the year with core business being an umbrella forum bringing together representatives from all ETTA competitions. This seemed to mainly serve as a 'health check' reporting opportunity and therefore may require an amendment of committee terms of reference going forward.

### 4.4 English Senior National Championships

4.4.1 We acknowledge the considerable and continued support from Sheffield International Venues, Sheffield City Council and sponsors Tees Sport (Butterfly) at this season's event that was held at Ponds Forge International sports centre, Sheffield, 1st -3rd March 2013.

4.4.2 The size of entry was lower than last year but very strong in terms of quality (relating to England rankings). Congratulations to all the winners, particularly Kelly Sibley who achieved the 'triple crown' for the second successive year, and to Liam Pitchford who won his first men's singles national title. It was estimated that the number of spectators was also slightly down on last year though a good number were present to enjoy the finals session. Full results can be found in the results section of this report.

4.4.3 Due to cost there was no TV coverage, however 'live streaming' from one table was transmitted onto the ETTA website and healthy viewing figures of

approximately 11,000 'hits' were recorded. Sports presentation, including award ceremonies, was again enhanced with music, a dance troupe and 'march-ins' to introduce the players.

4.4.4 Development and legacy activities were a new feature this year with come & try tables set up in the atrium for the general public to enjoy alongside the development and coaching stand. In addition, the live streaming screen and a results screen was on view for the general public to raise awareness of the competition and the sport in general.

4.4.5 Thanks again are extended to the hard working volunteer team, including Stuart Sherlock (Tournament Manager), Steve Welch (Referee) and his team of umpires, racket controllers, Dave Evans and Jim Kenny (field of play), and to Shirley Pickering and Sandra Deaton (sports presentation) who contributed to the delivery of this event. The mix of volunteers and professional staff works well for this event.

4.4.6 The three-year contract with Sheffield is now up and discussions are ongoing with local authority representatives to host the event from 2014 onwards.

### 4.5 English Cadet & Junior National Championships

4.5.1 These Championships were once again held at the Hertfordshire Sports Village, Hatfield, on 24th and 25th November 2012, and this brings to an end the current agreement with this venue.

4.5.2 The change in the event format has reduced the income from entry fees to offset the costs of the event.

4.5.3 We congratulate all the winners, which can be found on page 40 in the results section.

### 4.6 English Under 11-14s National Championships

4.6.1 The now regular qualification took place with great support across the regions on 6th and 7th April 2013.

4.6.2 This year's finals were staged at the Tipton Sports Academy, Tipton, on the 1st and 2nd June. This year 150 boys and 101 girls battled it out for the 10 national titles on offer.

### 4.7 Other Events

4.7.1 Social competitions are within the remit of the competitions staff, and several avenues have and are being pursued in this area of work as it will help to achieve

the 'growth' strategic aim of the Association.

#### 4.8 Ron Crayden Memorial Fund

- 4.8.1 Unfortunately the Ron Crayden Memorial Fund numbers have dropped substantially this year with now only 126 balls paid up.
- 4.8.2 With every set of Olympic tickets purchased through the ETTA an application form was included and details but this did not produce any more members.

#### 4.9 Commercial Activity and Funding Partners

- 4.9.1 We continue to receive significant support from the sports traders via tender for each event, although continuing cost rises are inevitable due to further oil price rises. These do impact significantly on the benefits we accrue from such support.
- 4.9.2 We acknowledge and thank UK Sport for their continuing support for our International Events programme. We were both sad and pleased that our UK Sport Major Events Consultant, Becky Irwin, has departed for pastures new but we welcome Sam Mathews as our new Sport Major Events Consultant.
- 4.9.3 It has been stated on numerous occasions that these are tough financial times and that attracting commercial sponsorship remains difficult if not impossible for sports of our size. Therefore it is so important that we continue to seek support from our funding partners in order to develop and promote our sport at the very top level.
- 4.9.4 'Value in kind' sponsorships can be very beneficial to us and we have in recent times used these to very good effect.
- 4.9.5 We also acknowledge the support of all our website and programme advertisers.
- #### 4.10 Merchandise
- 4.10.1 John Alsop and Brian Savage continue to work hard on our merchandising with small reward for their efforts. However, a 'T' shirt will be available, with all competitors' names on, for the forthcoming under 11-14s National Championships and we are looking at further opportunities down the line. Our thanks go to them for their efforts.
- #### 4.11 The Future
- 4.11.1 A recent independent feasibility survey funded by UK Sport looked at the opportunities to bring an Individual World Championships to England again in 2017. The

conclusion of this survey was that without significant funding from UK Sport and the host city, the budgeted costs were prohibitive and would place the Association under severe financial pressure. We have therefore withdrawn from further negotiations at this time.

4.11.2 Discussions have been ongoing with one city with a view to holding one or two English Opens over the next few years but no conclusions have been reached.

#### 4.12 County Championships

- 4.12.1 The season saw a total of 250 teams entering the County Championships, an increase of five from last season; it continues to be one of the most popular ETTA competitions. Teams representing every county in England and some also from our Welsh neighbours took part.
- 4.12.2 The administration involved is significant. This season saw changes in the Administrator's duties, but despite being small in number, the committee continues to do its best to ensure all divisions run smoothly. There is still a lack of girl/woman players, but this has showed an improvement on last season.
- 4.12.3 The Senior Premier Division was retained by Middlesex, Berkshire taking the runners-up position. Yorkshire and Nottinghamshire were both relegated.



- 4.12.4 Middlesex won the Junior Premier with last season's champions, Sussex, being runners-up. Essex and Warwickshire were relegated.
- 4.12.5 Yorkshire took the Veteran Premier Division title with Leicestershire in the runners-up spot. Kent and Cleveland lost their places in the top flight.
- 4.12.6 Lancashire won the Cadet Premier Division, with Cleveland as runners-up. Glamorgan, Kent and Leicestershire were relegated.
- 4.12.7 This season the Over 60s' Premier Division was won by Yorkshire,

with Essex taking the runners-up position, thus reversing the positions of last season. Middlesex was relegated.

- 4.12.8 Middlesex had a successful season, winning two of the Premier Division titles.
- 4.12.9 Thanks go to all who helped with the administration of the County Championships this past season.
- #### 4.13 Calendar Working Party (CWP)
- 4.13.1 The new concept calendar, introduced to give a more structured approach to cadet and junior development which gives them all the necessary elements, training, competition and rest, has been accepted, and in general has proved a success.
- 4.13.2 As promised, where organisers of open tournaments have had problems in finding suitable dates, the CWP has relaxed the need to use tournament weekend dates, and have allowed tournaments to use other dates providing there was not a clash with other events.
- 4.13.3 As noted practically every year, we have again seen an increase in the number of open tournaments, which, whilst a healthy sign for the sport, does make the work of the CWP increasingly difficult.
- 4.13.4 During the season the CWP also undertook a review of the ETTA Event Priority List and made some minor changes to reflect current thinking.

#### 4.14 Tournaments Committee

- 4.14.1 This season the Tournaments Committee has approved over 100 open tournaments.
- 4.14.2 It is encouraging to see several new organisers running events at new venues.
- 4.14.3 Indications, however, for this season so far show a reduction in the number of players entering events compared to previous years.
- 4.14.4 With the introduction of the new sanction scheme in August it was hoped that the number of warnings given would reduce. So far this season this has not been the case. The first complete bans from all table tennis organised by the ETTA were given to four players in March.
- 4.14.5 The new sanction scheme will be reviewed at the end of this season.
- #### 4.15 British League (BL)
- 4.15.1 The British League completed its 34th season with 14 divisions of 8 teams.
- 4.15.2 This season was the first for a long time that did not see





Keith Ponting at the helm. The committee wish to pay tribute to his colossal effort over his long tenure; it is only in his absence that his true effort can be understood. He was a true giant of English Table Tennis and will be sorely missed.

- 4.15.3 This season the league has seen a huge improvement in terms of its press and publicity. A new press team was formed at the conference last year and this season the standard of reporting has increased exponentially, with the introduction of video interviews, regular professional photography, increased reporting and social media.
- 4.15.4 BBAT TTC won the Premier Division closely followed by Sycamore TTC in second place. Kingfisher and Barrow were relegated.
- 4.15.5 A special one day seminar was held on 28th April to discuss the future of the league. Many views and ideas were expressed and these will help shape the future of the league. The committee wish to thank the administrators of the Tom Blunn Fund for their financial support, without which the event could not have taken place.
- 4.15.6 This season saw the appointment of Chris Dangerfield as Chairman. Chris had been involved with the British League Committee for the previous two years and was instrumental in the introduction of the new results service and press activities. Gary Wood also joined the committee as Secretary.

4.15.7 After many years Steve Kerns is retiring as Press Officer and Aubrey Drapkin is retiring from the committee, as is Tony Meredith. The British League committee wish to thank each of them for their many years of support.

4.15.8 A number of new committee members have been recruited and the team looks forward to bringing about positive change and innovation to the league over the coming years.

#### 4.16 **Bribar Junior British League (JBL)**

4.16.1 Twenty years ago, the Development Department of the ETTA introduced a new competition to the Events Calendar. That event was to include the innovation of the then sponsored Woolwich Junior League and the Woolwich Junior British League (JBL), the idea being that this would complement the well-established British Leagues already in existence with junior teams. The organisers who were given the honour of putting it into practice were the husband and wife team, Mike and Christine Lewis. How the competition has progressed since that "humble" beginning. From scouring the British Isles to recruit 36 teams to make up the first season of competitors, the event has now grown with 108 applications received for last season. The event gradually expanded to 72 teams in the early days and remains at that number today for the main competition. Due to the

demand a qualification knockout phase was introduced around 10 years ago. This system even today is regarded as a key stage of the JBL.

- 4.16.2 As in life, there is good news and not so good. The good news is that a new venue (to table tennis) was found by members of the JBL committee and used throughout last season. There was massive support and praise for the venue, Tipton Sports Academy, though there was a concern over the eventual seating arrangements, due to a lack of chairs. The newly developed IT system was put into the event and although there were some teething problems, generally the new initiative was welcomed. However, there was some delay in getting the end-of-round results published, which resulted in just a single public display of the league tables and individual averages being produced. In general, the competition proved to be very competitive throughout and was well-run by the JBL Organising Committee, supported by the staff at Tipton and in Hastings, as well as the sponsors, Bribar. The team was completed by the excellent squad of umpires at the main event in October and February respectively. Sincere thanks are extended to all those who made the event a pleasure to be a part of, including all officials, players, parents and coaches.
- 4.16.3 As we are all aware, our President, Keith Ponting, sadly passed away last year. Keith was



- extremely passionate about the JBL and was ever-present at the event. It was clearly one of his favourite competitions. A number of the JBL committee asked that Keith be remembered at the JBL for his dedication, loyalty and enthusiasm for the competition. That request was put to ETTA for approval and it was agreed that a perpetual shield should be awarded to each of the Boys and Girls Team of the Weekend. It was a real pleasure and delight to all concerned to see Keith's wife, Rosemary, attend the final weekend in February to present the shields for the first time.
- 4.16.4 Currently we are experiencing some issues relating to venues for the new season for JBL. The issues are complicated but revolve around a very popular venue which has covenants on the number of non-tennis events which can be held there, plus additional bookings by VETTS and ESTTA, etc. It is hoped to finalise venues shortly and advise all organisers of them. The Events Department apologizes to the organisers and volunteers affected by this issue and thanks them for their patience and understanding.
- 4.17 Bribar Women's British League (WBL)**
- 4.17.1 2012/13 began the Women's British League's 25th year, having begun its journey during the 1988/9 season. The first event was held at the Meadowside Leisure Centre in Burton-on-Trent on 15th/16th April 1989. It has grown from strength to strength over 25 very successful years and continues to do so.
- 4.17.2 The league caters for females of all ages and provides an excellent springboard for younger players to gain valuable experience from a variety of standards and styles.
- 4.17.3 2012/13 saw 34 teams enter. The first three divisions were run on the 6-team format and Divisions 3 and 4 on the 8-team format as per WBL Regulation 4.3.
- 4.17.4 There was a full complement of umpires. A welcome addition from the Press and Publicity team was up-to-date coverage throughout the weekend, with interviews, reports, Twitter and more. Up to the minute online results came from Malcolm Macfarlane.
- 4.17.5 Crystal prizes were awarded to Player of the Weekend, Louis Peake of St Andrews TTC, and Team of the Weekend, Ormesby.
- 4.17.6 The first weekend was efficiently run by WBL Organiser John Hardcastle, Assistant Peter Bradley and Referee Gill Smith along with umpires, Joyce Stephenson, Margaret Calver and other volunteers who helped make the weekend a success.
- 4.17.7 The sponsors were Bribar and our thanks are extended to them for their continued support.
- 4.17.8 PinkPong members, in between playing, raised £160 over the weekend for this worthy cause – a charity set up to 'increase awareness of cancer for everyone, and to raise money for different cancer charities and foundations, and even communities'.
- 4.17.9 In December we heard the very sad news that John Hardcastle had died. John will be sadly missed by everyone who ever knew him. In addition to being
- Organiser of the WBL for the past five years, John undertook many umpiring duties at national and local events, with assisting at the Paralympics in London 2012 being the icing on the cake. He was a cheerful and very popular gentleman, always pleasant and would go out of his way to help anyone.
- 4.17.10 Referee Gill Smith saw the need to "keep the show on the road" and in addition to her Referee duties, without hesitation and with the utmost efficiency, began the immense task of collating information for the 2012/13 final weekend, whilst delicately communicating with John's family. With Gill 'on task' it wasn't long before everything was back on track.
- 4.17.11 In January Gill passed on the newly organised dossier of information onto the incoming WBL Organiser Dot Macfarlane, and continued to support her to achieve a smooth transition.
- 4.17.12 The final weekend was held at The Dome, Doncaster, on 16th/17th February 2013. Accommodation was at the Holiday Inn Doncaster. The WBL have received excellent service over more than ten years from both these facilities.
- 4.17.13 At the beginning of the WBL final weekend, an honourable applause instead of a minute's silence was held to recognise John's outstanding contribution to the Women's British League.
- 4.17.14 Again the full quota of umpires were available, the Press and Publicity team continued to provide interviews, reports and Twitter coverage throughout

- the weekend, and Malcolm Macfarlane provided the up-to-date results service.
- 4.17.15 Ormesby began the final weekend in pole position but with Halton and Draycott & Long Eaton close on their heels. Despite the latter beating them in the last match of the weekend, Team of the Weekend from the first weekend Ormesby secured the Championship, the Butterfly Bowl and eligibility to request entry into the following season's European Club Championships.
- 4.17.16 After last year's relegation, Division 1 winners, Poole Ladies, won promotion back into the Premier. Runners-up from Division 2 last year again took the runners-up spot and thus rose two divisions in two years. In Division 3 another double was achieved by winners AICES who will be joined in Division 2 by their runners-up both times, Fusion Ladies. New Team Byng Hall C won Division 4 with Formby (Ashford) also gaining promotion.
- 4.17.17 Crystal prizes were awarded to all winners and runners-up. Crystal was also presented to Team of the Weekend, Irish Ladies, and Player of the Weekend, Linda McLellan of Drumchapel Glasgow 2.
- 4.17.18 The Solihull Trophy - "A perpetual trophy to be awarded to an individual who has enhanced the Women's British League" and voted for by the players, was awarded to Gill Smith for her dedicated service to the league.
- 4.17.19 The Organiser, Dot Macfarlane, wishes to thank Referee Gill Smith for her outstanding assistance, support and patience in ensuring the smooth transition and providing an excellent playing schedule throughout the weekend. Also to the umpires and other volunteers for their assistance over both weekends, Sue Smith, Assistant Referee, Joyce Stephenson, Administrator, Malcolm Macfarlane, Results and IT, Chris Dangerfield, Matt Shaw, John Upham and Trevor Parsons on Press and Publicity.
- 4.17.20 Thanks also goes to the sponsors, Bribar Table Tennis, for their continued support throughout the whole event.
- 4.17.21 Thanks go to everyone who supported PinkPong. They raised another staggering £292 and added to a £65 'WBL fund-raising performance related' donation from Ryan Jenkins the

total for the two weekends rose to an awesome £517. Well done everyone.

4.17.22 Last but certainly not least thank you to three colleagues who gave outstanding assistance throughout the weekend at Doncaster. Jim Kenny, Ken Eliot and Malcolm Macfarlane, despite other duties and a very early start, provided the manpower and expertise in both setting-up and taking down of equipment.

**4.18 Bribar Veterans' British League (VBL)**

- 4.18.1 The League consisted of 48 teams, with five men's divisions and three ladies' team divisions, each with 6 teams; Premier Division (men), Premier Division (women), Division 1A (men), Division 1B (men), Division 1 (women), Division 2A (men), Division 2B (men) and Division 2 (women).
- 4.18.2 The first weekend was staged at Hereford in the Hereford Leisure Centre and the second weekend was staged at Doncaster in the Doncaster Leisure Park. Both are excellent venues, and will be used again next season.



- 4.18.3 The Premier Men's Champions were St Neots and the Ladies Premier Champions were The Bribar Bunch.
- 4.18.4 The Referees were Alan Duke and Brenda Baldwin with Sue Smith entering the results on both weekends. It was very successful to have a person dedicated to entering results.
- 4.18.5 Jim Beckley (Vice-Chairman (Press & Publicity)) was unable to attend either weekend due to ill health and so we had no press reports. Chris Dangerfield and his team were also absent on the second weekend so there was no publicity on the final weekend. Trevor Parsons was sent by ETTA to take photographs.

- 4.18.6 The Organiser was Gill Smith who wishes to thank the Referee Alan Duke, Deputy Referee Brenda Baldwin, Ken and Margaret Bridle (administration), Sue Smith (results) and all the umpires who worked so very hard to make this event a success.
- 4.18.7 The sponsors were Bribar Table Tennis and thanks are due to them for their continued support.
- 4.19 Veterans' National League (VNL)**
- 4.19.1 Once again the league was played over two weekends, split north and south of the country, the first weekend being played at Blackpool Sports Centre and the second at University of West of England at Bristol. After a very difficult summer formulating the divisions, the week before Blackpool showed a full complement of teams, i.e. 24, but two days before the event one team pulled out and, another club with two teams could only provide four players leaving each of their two teams a player short, not the best start but the teams played on and enjoyed the weekend.
- 4.19.2 The second and final round of matches at Bristol occurred during the spell of very bad weather in late January, but all of the teams who played in the first weekend managed to beat the dreadful driving conditions and turned up on time to play their matches, in what are probably the best playing conditions available. A keenly fought final set of matches threw up unexpected results, with some divisions very close indeed.
- 4.19.3 The final placing saw OLOP, Graham Spicer, Ormesby and Seaside, promoted to the Veterans' British League from Divisions 1A and 1B respectively.
- 4.19.4 Relegated to the second divisions were Blackpool, Hollingbury B, Eastfield Peterborough & OLOP 2.
- 4.19.5 Promoted from Divisions 2 A/B were Reading YMCA, Hereford Challengers, Ashford and Redland Bats 2.
- 4.19.6 Congratulations to all of the teams taking part for their sportsmanship and enthusiasm. However, it must be remembered that events like this require a great deal of work both before and after play and a team of volunteers to perform these duties. Thanks are due to Referee Alan Duke for his input prior to any play taking place, Dave Cochrane for his

weekend expertise especially with the computer, Wendy Clarke for her organisation during the two weekends, and Stan Clarke for the task of persuading clubs to submit paperwork in time.

4.19.7 We also acknowledge the contribution of our dual sponsors, Teesport and Bribar Table Tennis, for the supply of equipment.

#### 4.20 National Junior League (NJL) & National Cadet League (NCL)

4.20.1 This past season has been the best ever for the number of teams playing in NJL and NCL – 215 (193 in 11-12) in NJL and 236 (187) in NCL. The three main factors in this have been:

- i) The recruitment of new organisers at Wensum (Norwich), Okehampton, Bristol and Scunthorpe and the return of Ilfracombe as a NJL venue;
- ii) The fact that NJL/NCL players this season needed to be members rather than licence holders;
- iii) That both of the “West and East London Greenhouse venues” offered and ran both NJL and NCL on four different days this year, rather than combining them on the same days.

4.20.2 All organisers provided in their planning for the minimum nine matches per day for their entrants this season, but at a couple of venues this did not actually happen because teams did not turn up and did not even let the organiser know they were not coming. This will hopefully be addressed for next season.

4.20.3 Thanks to all organisers for the excellent work they do, not only throughout the season but also pre-season in helping to recruit teams in their locality. Particular thanks here are due to Shawn Haskell at Okehampton and Mark Dare at Wensum.

#### 4.21 Grand Prix

4.21.1 The Grand Prix circuit continues to be a great opportunity for players of all ages and genders to compete domestically. Entries this season are currently on course to be slightly higher than last season.

4.21.2 The Grand Prix Delivery Group made a number of changes to the Grand Prix format for the 2012/13 season. These included a return of doubles, the addition of a Women's Band 4 and increasing the size of women's groups. These changes have been viewed

as largely successful and will be continued for 2013/14.

4.21.3 The 2012/13 season comprised eight full events spread around the country in Liverpool, Guildford, Newcastle, Bristol, Doncaster, Blackpool, London and Medway. These were complemented by satellite events in Cardiff, North Herts, Sussex and Jersey.



4.21.4 Russell Moore has provided excellent coverage on the ETTA website and social media channels. We are currently investigating live-streaming the matches online from venues, improving the photography and looking at ways to engage further with the local media.

4.21.5 ETTA wishes to acknowledge the support of Bribar Table Tennis and Tees Sport who supply equipment and some financial support.

4.21.6 Huge thanks from all of us at ETTA must go to the officials (referees, deputies, assistants, organisers and umpires) who make all of the events possible. A special vote of thanks must go to Mick Strode as we wish him all the best in his recovery.

#### 4.22 English Leagues Cup Competition (ELCC)

4.22.1 The sixth season in the new format of the competition whose origins go back to 1935. Apart from the English Open it is the oldest domestic event in the calendar.

4.22.2 An increase in the Carter Cup entries (Junior Boys) was pleasing but it is still difficult to attract the young ladies for the Bromfield Trophy which saw a decrease of three teams. The overall number of teams was down by one to 75. There was a change of referee this year with Diane Webb acting in this position and assisted by Mick Strode.

4.22.3 At the time of writing, the zonal rounds have taken place for the

junior events with the following qualifying for the finals: Carter Cup – Hull, Bournemouth A and B, Leamington Spa A and B, Reading, Wembley & Harrow and North Herts. The Bromfield Trophy five are: Warrington, Bournemouth, Wembley & Harrow, Kettering and North Middlesex.

4.22.4 The zonal rounds for the senior events, the Wilmott Cup and JM Rose Bowl, took place on 27th April with the finals again at the Westfield Table Tennis Centre, Wellingborough, which has made us so welcome over the last few years. They will take place over the weekend of 15th/16th June 2013. A verbal report will be given at the AGM of these results.

4.22.5 Much appreciation, as always, goes to the Local Leagues which hosted the zonal rounds and everyone who supported the competition.

#### 4.23 National Umpires & Referees Committee (NURC)

4.23.1 The training programme was extended this season, with courses for prospective county umpires in London, Basingstoke, Sheffield and Brighton, and refresher seminars for qualified umpires in Widnes and Haringey. An innovation was a course for aspiring tournament referees, combined with a refresher for established referees, also held in Haringey in conjunction with a Coaching Conference organised by PRO-ACTIVE North London. Thanks are due to the Regional Development Managers concerned, whose co-operation has been invaluable. There has been continuing co-operation with Sports Officials UK (SOUK) and two members of the committee will be attending a SOUK training course for tutors.

4.23.2 Thirteen County Umpires and three Local Umpires were registered this year, and it was encouraging to see so many of the recent recruits active at tournaments. There was also a welcome increase of interest in refereeing, with one candidate completing the Tournament Referee qualification, two others reaching the Provisional TR stage and several more currently taking the written test. There were three candidates for a National Umpire examination to be held at the end of the season.

4.23.3 English umpires attended international competitions in

Austria, Belgium, the Czech Republic, France, Germany and Italy. Stuart Sherlock was appointed referee of international championships in Brazil and the Czech Republic, and Karen Tonge was selected as referee of the ITTF Men's World Cup held in Liverpool. English match officials played an important part in their organisation and management of the table tennis competitions of the London Olympic and Paralympic Games. The former NURC Chairman, Richard Scruton, was the Competition Manager while Stuart Sherlock and Steve Welch were, respectively, Deputy Referees of the two competitions. Three English International Umpires officiated at the Olympics competition and 15 at the Paralympics, with many others carrying out essential supporting duties elsewhere in the organisation.

4.23.4 It was with great regret that the committee learned of the deaths of Philip Gower of Essex, an International Umpire and International Referee, and of John Hardcastle, a National Umpire and the long-serving CU Secretary of the Yorkshire Association.

**4.24 Tournament Organisers Qualification Delivery Group**

4.24.1 Work has begun to consider a review of the current Tournament Organisers qualification with a view to re-launching the scheme. A discussion paper has been produced and was tabled at a working party convened at the National Championships to initiate

the debate. The meeting was attended by the widest possible cross section of competition organisers in England and it is likely that the outcome will be to develop a broad 'Competition Organisers' scheme.

**4.25 Competitions and Events Department Volunteers**

4.25.1 The Department uses more volunteers than any other and we would like to place on record the significant contribution these volunteers make to the Department. Indeed it is fair to say that without them the Department could not function in the way that it does. Our sincere thanks go to them all and an invite to continue to offer their time to our great sport. It is much appreciated.

**4.26 Staff and Events Department**

4.26.1 Diccon Gray has recovered extremely well from his recent illness and continues to serve the Association well. Vanda Jones, our National Events Administrator, offers considerable support to our events from the office.

4.26.2 Mat Morris was appointed as National Events Officer earlier in the year and has settled in well, making a valuable contribution. Zac Ferris was also appointed as Assistant Events Officer during the year, bringing the team up to a full complement.

**5. Development**

**5.1 General**

5.1.1 The development department is driven by its aim to make table tennis the 'most popular indoor sport in England' alongside looking to increase participation

by the inclusion of social table tennis working with a number of partners. The 'Ping' initiative has undoubtedly been a major success and is due to continue – what must happen however is the continuing development of a strong 'player pathway' so as to link up with local Leagues, clubs and schools.

5.1.2 The continuing development of a strong network of PremierClubs is essential as is developing ways to encourage young people to stay in our sport. The creation of a 'Women in Sport group' has looked at several ways of motivating girls, both to take up and to stay in our sport, but now needs further developmental initiatives.

5.1.3 Table Tennis can be a 'sport for life' and indeed it is with veterans having an increasing band of 080s continuing to play competitively, and the department has linked up with 'Britdoc', a scheme to help the elderly with their mobility/health issues.

5.1.4 ESTTA has a thriving membership of schools/competitions and it is increasingly important that ETTA continues to work closely with them.

5.1.5 The department also aims to take full advantage of relevant funding opportunities to both sustain and extend all current initiatives together with the development of new initiatives.

5.1.6 As is now customary each Regional Development Manager (RDM) communicates with local leagues and County Sports Partnership (CSP), offering the





opportunity for them to attend a meeting, not only to provide an overview of their role, areas of work, etc. but also discuss possible opportunities for development, and where relevant, the possibility of accessing funding opportunities.

5.1.7 The way forward for our sport is to ensure there is a strong pathway to enable participants from many of our initiatives such as PremierLeague 4Sport to continue to improve and develop through a strong club system.

**5.2 PremierClub & Premier League 4 Sport (PL4S)**

5.2.1 PremierClub membership over the last four years – this season we took the strong decision to cleanse the ETTA PremierClub programme. A large number of clubs have sat on the programme for a number of years. Unfortunately they have not submitted up-to-date yearly affiliation data, fully adopted Individual Membership or even renewed their annual PremierClub affiliation fees for every season.

of fully completed PC affiliation form returns. We do, however, still need to ensure all clubs do complete and return their affiliation form.

5.2.7 The 10,000 mark for PremierClub members this season has been surpassed – great news!

5.2.8 Total paid affiliation fees collected equates to £5,159.

5.2.9 Overall PremierClub figures April 2013:

Clubs on Database	178
Clubmark	111
Affiliations Paid 2012/13	156
Self Assessment Forms	138

The new PremierClub database has proved very useful especially with new questions being asked this season around the number of hours the clubs operate, the exact number of table tennis tables being used, and linked satellite sessions (external coaching sessions usually based in schools which are supported or delivered by the club coaches).

5.2.10 The male to female ratio based in our clubs is about the national

**Figure 1**

Individual Members	April 2010	April 2011	April 2012	April 2013
Clubs	248	261	245	156
East	854	849	614	565
East Midlands	1,183	1,023	867	940
London	1,199	1,723	811	1,333
North East	375	555	529	676
North West	1,922	1,776	1,012	1,531
South East	1,845	2,017	1,266	1,793
South West	964	1,184	1,430	2,093
West Midlands	755	1,214	425	377
Yorkshire	697	663	897	937
Total	9,794	11,068	7,851	10,245

5.2.2 Clubs were contacted and notified on three occasions throughout the season that they will lose their PremierClub status if they did not renew their membership and pay their affiliation fees.

5.2.3 PremierClub membership totals April 2013 see figure 1

5.2.4 Although the number of clubs has now dropped dramatically on the programme, the overall membership figures have shown an increase on the previous season's figures.

5.2.5 Further improvements to the Clubmark accreditation process have been made including offering the opportunity for clubs to accredit by submitting verification online.

5.2.6 The new online affiliation form this season has increased the number

average for club sport. General PremierClub figures 19.04.13 for the season 2012/13:

Coaches	559
Club Volunteer*	519
Technical Officials**	184
ITTF Approved Tables	1,363
Hours: clubs/year***	306,420
Senior League Teams	1,226
Satellite Sessions	141
Affiliation Level Clubs	85

\* excluding chairmen, secretaries, volunteer co-ordinators & club welfare officers

\*\* umpires, referees & tournament organisers

\*\*\* average; opening hours x days per week x weeks per year x no. clubs

5.2.11 The table shows the total number of clubs which attained an official star rating, five having achieved

the prestigious top level. The 85 clubs at affiliation level are still working towards Clubmark accreditation before they can be awarded a star rating status. An enhancement on the star rating guide will be available for next season to further encourage and explain the next steps required for a club to achieve their next star rating level.

1 Star Clubs	27
2 Star Clubs	16
3 Star Clubs	29
4 Star Clubs	16
5 Star Clubs	5

5.2.12 Year one of the new database is starting to show some worrying trends with both boys and girls having a more than 50% drop off from cadet to junior age categories. Club membership breakdown declared on received PremierClub online affiliation forms:

Cadet Boys	2,112
Cadet Girls	448
Junior Boys	927
Junior Girls	214
Senior Men	5,812
Senior Women	862
Males in Clubs	85%
Females in Clubs	15%

**Figure 2**

Clubs	Database	Affiliated	Clubmark
East	14	12	11
East Mid.	20	18	11
London	16	14	11
North East	10	10	4
North West	23	21	12
South East	32	28	21
South West	30	29	19
West Mid.	17	10	13
Yorkshire	16	14	9
Total	178	156	111

5.2.13 PremierClub and ETТА Club Questionnaires - a number of questionnaires went out between April and May, primarily around the ETТА PremierClub programme and future ETТА club programmes. The development and input to the questionnaires was supported by Harriet Hislop who is currently studying a Sport and Management (BA Hons) at the University of Brighton. Harriet agreed as part of her studies to support an NGB as work placement for six weeks. The questionnaires were categorised into three main sections: current, past and potential ETТА clubs

and ETТА club members or participants.

5.2.14 ETТА PremierClub of the Year Awards 2013 Winners - congratulations to all PremierClubs which have won a National or Regional Award. All PremierClubs currently registered and paid on to the ETТА Club development programme were put forward for this year's awards. Clubs were assessed on development growth with measures on their previous season's PremierClub assessment form compared to the new forms submitted for this season. Criteria and scoring for the awards included looking at an increase in their club's membership, the number of league teams, competitions hosted or supported, ETТА regional officer input and any new club initiatives, such as open play sessions, new partners working with or supporting ETТА projects such as Ping!

5.2.15 ETТА PremierClub Regional Winners 2013 can be found in the Awards & Thanks section on page 46-47.

5.2.16 Higher Education Clubmark Accreditation pilot work - Knight Kavanagh & Page, consultants for Clubmark accreditation programme, have asked ETТА to be involved in some early pilot work for a specific HE Clubmark accreditation scheme. One of the main justifications, identified by the universities, is to develop an effective and strong working relationship with NGBs directly. The concept will try to mirror how this works with our community clubs (PremierClubs) to ensure they are achieving the same standards, and in turn are offered the same support and benefits through the affiliation system linked to achieving Clubmark accreditation. The universities whose table tennis clubs are involved in the pilot are: University of Central Lancashire, University of Manchester and Nottingham Trent University.

**5.3 Multi-Sport Satellite project 'FUSION X'**

5.3.1 Sports working together to get more young people active - Team GB hockey star and London 2012 bronze medallist, Hannah MacLeod, joined 23 young people at Bishop Challoner Catholic College in Birmingham on 15th March for the first session of a

pioneering multi-sport project, 'fusion x', which aims at getting more young people playing sport. Part of Sport England's Satellite Clubs programme, the project is a new approach to delivering satellite clubs with table tennis, lacrosse, basketball, hockey and golf working together to create a multi-sport community club at the school.



5.3.3 Delivered in partnership with local sports clubs, which help provide coaching and equipment, 'fusion x' offers 14 to 16-year-olds from across the local community the chance to take part in a range of sports. They are then helped to make the step into regular participation by joining up with one of the local clubs involved in delivery.

5.3.4 With £6,500 of National Lottery funding from Sport England to establish the club, the five sport governing bodies have worked together to create a new sporting offer for young people. Following the completion of the pilot, it's hoped the multi-sport model can be replicated across the country.

5.3.5 The Satellite Clubs programme is one of the key initiatives within Sport England's five-year Youth and Community strategy. The programme aims to get more 14 to 25-year-olds active by making it easier for them to stay in sport or start playing sport by establishing school-based sports clubs with links to community clubs. By 2017, every secondary school in England will have been offered a community sports club on its site.

5.3.6 Sport England Director of Community Sport, Mike Diaper, said: "It is great to see five sports working together with Bishop Challoner Catholic College to create a brand new multi-sport Satellite Club where young people can come and try out a

range of sports under one roof. Our Satellite Clubs programme is all about creating new and appealing opportunities to help young people make the step into community sport and set them on the path to creating a sporting habit for life.”

5.3.7 Sessions run at Bishop Challoner Catholic College, King’s Heath, Birmingham, every Friday from 4:30-6:30 pm.



#### 5.4 Premier League Commitment

5.4.1 Lord Coe, Chairman of the British Olympic Association and architect of the London 2012 Olympic and Paralympic Games, has hailed the positive work done by Premier League clubs in their communities, particularly with respect to sports participation.

5.4.2 Writing the foreword for the Premier League Creating Chances 2012 report, Lord Coe said: “The Premier League is to be applauded for ensuring that thousands of young people will get their opportunity to participate in sport. For years the Premier League has been delivering in the area of sports participation and they, like me, are heartened to see that in 2012 this issue moved higher up the agenda for government.”

5.4.3 Lord Coe went on to elaborate on the breadth of community work that Creating Chances projects cover: “It’s not just about sport. In this document are some powerful examples of partnership having an impact on young people in these shores and afar: Kickz with the police, Premier Skills with the British Council, Reading Stars with the National Literacy Trust, over 80 community projects funded by the Premier League Professional Footballers’ Association Community Fund. And that’s just the League; you now have the likes of Liverpool and Sunderland acting as lead

agencies in their city for men’s health and family learning. Professional football is now a recognised best practice provider of social development.”

5.4.4 Premier League Chief Executive, Richard Scudamore, said: “The Premier League, like most sports bodies, is not a recent convert to the power of our players, clubs and activities to engage. The focus on sport during 2012

has put the role and ability of organisations like us to deliver across a range of areas right back in the centre of the political debate and the public’s mind. We are proud of the facilities being built and the practitioners whose drive and professionalism is making a real difference to thousands of young people from all backgrounds throughout the country.

5.4.5 “Our clubs have a tremendous track record in terms of investment and delivery in this area with huge amounts of money and resources historically flowing into projects like Kickz and Premier League 4 Sport. It is something we, and they, can only do because of the success and strength of the Premier League as a competition. So the clubs’ commitment to ensuring we remain a vibrant and compelling elite football competition is critical to their ability to deliver the breadth and depth of community work detailed in the Creating Chances Report.”

5.4.6 Minister for Sport Hugh Robertson said: “The Premier League’s Creating Chances programme has been doing fantastic work in clubs’ local communities for years. As well as helping to increase opportunities for young people to get involved in football it has helped deliver on social inclusion, education and career development. I hope the

programme goes from strength to strength in the years ahead.”

#### 5.5 Premier League 4 Sport Programme to continue

5.5.1 The Premier League is looking to extend and expand the PL4S programme for another three years in partnership with Sport England and NGBs (ETTA). The new model is proposed to expand to 32 Premier and Football League clubs and involve 12 sports in total. Update:

- Four new sports (athletics, tennis, golf and boxing) will join the programme.
- 26 football clubs will receive funding for a full-time PL4S officer and the delivery of 20 satellites across a minimum of six sports and maximum of eight different sports.
- Six clubs will receive funding for a part-time officer and the delivery of ten satellites across a minimum of three sports.
- All NGBs delivering as part of the programme have overarching satellite club targets as part of their 2013-17 WSPs. They will be expected to utilise some of this funding to support the development of their sport within the PL4S programme. The Premier League will no longer provide capacity funding direct to the NGBs.

5.5.2 Premier League 4 Sport headline figures for participation:

- Premier League 4 Sport (PL4S) – 57,178 young people played eight Olympic sports of badminton, basketball, handball, hockey, judo, netball, table tennis and volleyball in the first three years of PL4S since 2009.

Clubs	17
Satellites	66
Males	1,567
Females	292
Engaged	1,878

#### 5.6 Higher Education (HE) Engagement

5.6.1 This year has seen an increase in the engagement with Higher Education (HE) institutions and BUCS (British Universities Colleges Sport) to facilitate more young people taking an active part/ role in table tennis. Research has been undertaken with a number of universities and their students to ascertain the important components that would comprise a suitable offer for HE students



and table tennis, engaging with the sport in a traditional and non-traditional way. Responses have been gained from each region with approximately 600-650 responses collected overall, ranging from the preferred time to play, whether indoor or outdoor, and how students would like to be communicated with. Once all the responses have been analysed an appropriate offer will be drafted for HE students.

5.6.2 Eight universities have received outdoor tables from the ETTA to see if these have an effect on the numbers of students becoming active. Photos and written comments have been received regarding the popularity of the tables, and a short questionnaire is being distributed to the recipients of tables to see how they are being used, advertised and formed as part of a development programme.

**5.7 Instant Ping! Pong (IPP)**

5.7.1 Instant Ping! Pong (IPP) has proved to be popular with County Sports Partnerships (CSPs), local businesses and colleges in increasing participation in table tennis. IPP has been redesigned to fit in with Ping! to ensure continuity of branding and message. The new IPP pack will still consist of seven bats, three balls, rollaway net and a series of games and competition formats. Discussions are ongoing with a sports supplier to market and stock the product.

**5.8 Ping!**

5.8.1 Ping! (2010-2012) is a partnership between the English Table Tennis Association (ETTA) and Sing!, London (Participatory Arts Organisation), increasing public awareness of the sport by linking sport and the arts and taking sport to the community, thereby reaching new audiences in a non-traditional setting and way. Ping! is the street ping pong festival which sees tables placed all across a town or city for a month for all to use and enjoy; from cathedrals to parks, galleries to train stations, shopping centres to public squares and even airports.

5.8.2 This year Ping! has been shortlisted for the National Lottery Good Causes Awards. These Awards are an annual search to find the UK's favourite Lottery-funded projects. Now in their tenth year, the Awards recognise

the incredible difference that Lottery-funded projects have made to people, places and communities all across the UK with the 400,000 grants that have been made since 1994. They also celebrate the talent, hard work and amazing dedication of the people involved in running them. Awards are given across seven categories, reflecting the different types of projects that benefit from Lottery funding. These are: art, education, environment, health, heritage, sport and charity/voluntary.

5.8.3 London, Hull, Bristol, Sheffield, Brighton, Hampshire, Liverpool and Leicester have seen outdoor tables placed in public places. Ping! has been seen at landmark venues (London Eye, Trafalgar Square, Science Museum, Euston Railway station, etc). It has involved bat making sessions, Singles for Singles nights, and poetry recitals. Involving and engaging a wide range of community groups and organisations in its rollout. It has also attracted commercial organisations, such as Aardman Productions of Wallace and Gromit fame to be involved (Ping! Bristol 2012).



5.8.4 The Ping! Pong Parlour has been a centrally located pop up space and venue that becomes a free to use social ping pong club for the duration of Ping! It has been the focal point for everyone involved in Ping! whether participants, volunteers or members of staff. Whilst participants can come in and play free table tennis, it is also the base of operations for Ping! where staff and volunteers have gathered for training, briefings and to co-ordinate Ping! whilst it is running, but it is also an event venue from time to time.

5.8.5 Both free-play and structured Ping! activities engaged

people from diverse cultural backgrounds. The cities that have hosted Ping! during the last three years have all seen the positive impact of the programme, which includes a strong legacy programme of play after the event has closed and participant migration towards traditional table tennis clubs. Ping! aims to stimulate community cohesion and engagement with community groups and organisations, which become actively involved in its rollout and delivery. At the end of the project each city ran a table donation scheme to place the indoor/rollaway tables in target areas that addressed community need, removing time, facility and location barriers for people to pick up a bat and play.

5.8.6 Ping! has engaged over 600,000 people in table tennis in over nine cities, including London in 2010 and 2012, Birmingham and Hull in 2011, Bristol, Liverpool, Hampshire & the New Forest, Brighton, Leicester, Birmingham and Sheffield in 2012.

5.8.7 During 2012 a total of 379 tables were placed across London, Liverpool, Bristol, Sheffield, Birmingham, Leicester, Brighton & Hove, Hampshire and the New Forest. 307 temporary tables were placed in central, high profile strategic locations across all cities. In addition 72 concrete tables were installed by ETTA for permanent use in parks, leisure centres, universities and public areas. Ping! enables consultation and communication within local communities and can lead to regeneration of target areas.

5.8.8 Ping has worked with a wide range of partners across a variety of disciplines including local authorities, sport, the arts, music, social networking and community clubs. In 2012 237 events were delivered across the Ping! cities and included sessions/activities such as Ping!giner sessions at the Custard factory in Brum (Birmingham), "frying pan competition" in Brighton & Hove, "Ping! to the sound of Brazilian beats" in Liverpool, "Smash the city" competitions in London, the Ping! Panther vs Ping! Penguin show down in Sheffield, the Mela in Leicester and "Wild about Ping!" at Bristol Zoo Gardens.

5.8.9 There were over 137 Ping! volunteers in 2012 and the number for the complete project



totalling over 300. Volunteers received training on fun games, how to engage people in table tennis and how to run simple quick competitions. In excess of 390,000 people participated in Ping! 2012 which far exceeds initial targets and projections. Approximate participation figures are included below:

5.8.10	City 2012 approx. participation (number of people)
	London 90,000
	Liverpool 40,000
	Bristol 55,000
	Sheffield 30,000
	Birmingham 75,000
	Leicester 58,000
	Brighton 35,000
	Hampshire 15,000
	Total 398,000

- 5.8.11 Comments have been collected from each Ping! city to show the impact of Ping!
- Sheffield:  
 "I met a wide range of people who thought Ping! was a great idea and very addictive in any weather, fantastic idea".
- "It was nice to see people from multiple backgrounds playing against each other with no malice or anger towards each other".
- Birmingham:  
 "I saw many examples of young and older people playing together and they would not have even spoken to each other if there hadn't been a ping table there".
- Brighton:  
 "Brilliant, the council received so many positive comments about the project; this is one event

that really worked. I think this was because there was no formal commitment, no booking required, no time you had to be at a table by or take part (apart from scheduled events). People could play when they wanted to and fit a game or two in around their day – people returned because it was so easy".

- 5.8.12 Ping! has also been shortlisted for Sports Participation Event of the Year in the Sport Industry Awards 2013. Ping! embraces the growing market for social table tennis and has re-established it in the public's imagination as a fun, sociable and desirable sport to play. Those shortlisted for the Awards will now go forward for consideration by the main judging panel, who will decide the winners in each category. The results will be announced at the star-studded Sport Industry Awards ceremony on Thursday, 2nd May 2013.

## 5.9 Active People Survey

- 5.9.1 The Active People Survey 6 was completed on 14th October 2012 and the results were published on 6th December 2012. The survey provides the largest sample size ever established for a sport and recreation survey and allows levels of detailed analysis previously unavailable. The survey identifies how participation varies from place to place and between different groups in the population, and measures the proportion of the

adult population that volunteer in sport on a weekly basis, club membership, involvement in organised sport/competition, receipt of tuition or coaching, and overall satisfaction with levels of sporting provision in the local community.

## 5.9.2 Highlights from Active People Survey 6

- During the period October 2011 to October 2012, 15.51 million people participated in sport at least once a week. This is over 750,000 more people than 2010/11 (APS5) when 14.76 million adults played sport once a week. The latest result also represents a 1.6 million increase on 2005/06 (APS1).
- During the period October 2011–October 2012 (APS6), 8.639 million men (41.1%) participated once a week which is 175,300 higher than APS5 (8.463 million, 40.8%).
- Participation among women has increased by 578,500 from 6.296 million to 6.874 million (29.0% to 31.1%).
- During October 2011–October 2012, 11.718 million adults aged 26 and over participated in sport at least once a week (32.4%), 722,200 higher than APS5 (10.996 million, 31.1%).

## 5.10 Facilities

- 5.10.1 The ETTA Whole Sport Plan capital grant aid from Sport England for 2012/13 was £490,000 and was allocated to four projects:
- Knighton Park TTC £361,502 - relocation of the club through

- the sale of their existing freehold building and purchase of a Grade 2 listed theatre for conversion into a dedicated table tennis centre (six tables at Grade 3 or eight tables at Grade R).
- Egguckland Community College, Plymouth (Woolwell TTC) £99,950 – extension to sports hall to provide an additional table tennis area (two tables Grade 3 or three tables at Grade R), social area with kitchen and servery and viewing to sports hall.
  - Neville Lovett Community School (Generation 2 TTC) £10,964 – conversion of area adjacent to sports hall to provide social area with upgraded kitchen and toilets and viewing to sports hall.
  - Community PING! £17,584 – 13 concrete outdoor tables in Bristol and Cornwall on sites prepared and provided by the local authorities to support planned initiatives in these areas to promote recreational table tennis as part of the Ping! Legacy Programme.
- 5.10.2 This takes the ETTA Whole Sport Plan capital grant aid over the 2009-2013 period to £1,602,500 (cut from £2,000,000 in the government spending review) which has funded 17 projects with a total project value of £3,447,558.
- 5.11 National Trust**
- 5.11.1 Three National Trust estates have received pairs of outdoor table tennis tables. These sites are Barrington Court in Somerset, The Vyne Estate in Hampshire and Attingham Park in Shropshire. The impact of these tables will be monitored over the summer.
- 5.11.2 The National Trust is appointing sports development officers across the country to enhance the sporting opportunities available at their estates. If the tables prove successful it will hopefully prompt other National Trust properties to offer outdoor table tennis too.
- 5.12 Jack Petchey Foundation (JPF) – London Schools Table Tennis partnership programme**
- 5.12.1 The partnership with the Jack Petchey Foundation continues to thrive. It has supported the London Schools Table Tennis Programme for a third year with a substantial grant of £177,566, an increase of £70,000 from year two. The London Schools Table Tennis Championships continue to grow in popularity, with a greater number of entries and new schools participating in their first ever table tennis competition through the JPF/ETTA scheme.
- 5.12.2 To date almost 400 indoor table tennis tables have been donated to schools in London, with a further 200 planned to be donated in the summer of 2013. This is moving towards our long term aim, that every London secondary school will have access to a table tennis table. Through the generosity of the Jack Petchey Foundation the Indoor Table Donation Scheme has directly benefitted 7,571 young people in London over the past two years.
- 5.12.3 In addition to the indoor table donation, ETTA has successfully received two grants from Sportsmatch over the last two years, which has enabled a further 65 outdoor table tennis tables to be donated to London schools. The 2011/12 outdoor donation scheme was so heavily oversubscribed (over 800%), that the Jack Petchey Foundation awarded ETTA an additional £45,000, meaning that £93,000 has been invested in outdoor tables in London in 2011/12.
- 5.12.4 More details are available at [etta.co.uk/jack-petchey](http://etta.co.uk/jack-petchey)
- 5.13 Change4Life Sports Clubs**
- 5.13.1 The Change4Life Sports Club programme has generated growth in participation and associated health and behaviour benefits by providing equipment, training and support to schools. Table tennis has the highest number of clubs (764) and participants (18,418) of the seven sports that took part in the Change4Life Sports Club programme. The research evidences the success of table tennis as a low cost inclusive sport that has also engaged the ‘non sporty’ students.
- 5.13.2 A Change4Life Club Table Tennis handbook has been developed in partnership with YST, which will be distributed to all the C4LSCs. This will be a useful resource that will help to support and sustain the clubs.
- 5.13.3 We are aiming to sustain and support the existing clubs as well as providing opportunities for new schools to start table tennis clubs. We continue to work with SGOs and CSPs to arrange courses and encourage clubs to take part.
- 5.13.4 More details are available at [etta.co.uk/change4life](http://etta.co.uk/change4life)
- 5.14 Young Officials Award & TT Networker Courses**
- 5.14.1 Both these courses continue to be in high demand from schools delivering table tennis.
- ETTA Young Officials Award - 4 hour course is the first step on to the umpiring and competition organising ladder for young people (35 courses held, 492 candidates, 142% increase on 2012).
  - ETTA TT Networker - 6 hour course is the first step on the coaching, officiating or administration ladder for young people (32 courses held, 446 candidates, 114% increase on 2012).
- 5.14.2 Free courses worth up to £380 have again been offered to all accredited PremierClubs to encourage young people to commit to volunteering within our existing club network. Further details are available from your regional development manager.
- 5.15 English Schools’ TT Association Liaison**
- 5.15.1 ETTA and ESTTA continue to work closely together in areas such as: School Games (levels 1 to 4) and Jack Petchey Foundation London Schools Table Tennis partnership programme. The increase in participation within schools has been achieved through working with partner organisations such as the YST, and having products such as the Butterfly School League programme and Outdoor Table Initiative. With the ever increasing success of school table tennis it is even more important that we support ESTTA and the volunteers who run and deliver school competitions.
- 5.15.2 John Arnold, the President of the English Schools’ Table Tennis Association (ESTTA), has been honoured in the New Year Honours List. He receives the MBE for Services to School Sport.
- 5.15.3 John has been involved in the promotion of competitive school sport since he took up his first teaching post in 1963 in his native town of Macclesfield, Cheshire.
- 5.15.4 His interest in the development of table tennis led to his election to the ESTTA Executive Committee in 1973. He has held the office of General Secretary, Chairman and President – the latter now combined with the role of Development Officer.

5.15.5 Following the successful organisation by ESTTA of the International School Sport Federation (ISF) Table Tennis World School Championships in Birmingham in 1993, he was invited to chair and set up the ISF Table Tennis Technical Commission which has organised biennial events in nine countries, eight in Europe and China. He stood down from office in 2010 and made an Honorary Life Member of the ISF.

5.15.6 His interest in school sport in general resulted in his acceptance in 2001 of the Chair of the National Council for School Sport (NCSS), a post he still holds. He hopes that both ESTTA and NCSS 'teams' will share this honour for school sport.



## 5.16 Children and Young People Intervention

5.16.1 The School Games is the Government's policy for school sport and aims to encourage young people of all abilities to take part in more regular competition. It gives an opportunity to re-think and modernise activities leading to competition pathways. It is promoted at four levels:

- Level 1 – intra-school competition. A year round, multi-sport programme experienced by as many young people as possible, leading to a School Games Day (in their own school).
- Level 2 – inter-school competition. A year round programme of local leagues/regular competition in many sports, culminating in a Level 3 School Games Festival at county/district level.
- Level 4 – a multi-sport residential high profile event for the country's most talented school aged athletes (formerly the UK School Games). Table

tennis was included in the event held in Sheffield from 12th to 15th May 2013.

5.16.2 ETТА/ESTTA have devised and recently updated School Games Level 1/2 competition and activity cards for Intra/Inter-school use in primary/secondary schools. These can be found and downloaded from the Sports section of the School Games website [yourschoolgames.com](http://yourschoolgames.com).

5.16.3 In October 2012 the YST circulated School Games competition calendar analysis showing table tennis as third out of 44 sports, with 74% of School Games Organisers planning to deliver at secondary level in the 2012/2013 academic year.

## 5.17 Sainsbury's 2012 School Games – London, 6-9th May

5.17.1 The Games this year was a very special event, using the facilities that were used for the London 2012 Olympic Games. Teams from Northern Ireland, Scotland, Wales and five English Regions took part in Boys' Team, Girls' Team and Disability Team events. Because of time constraints, there was not an individual competition this year. Table tennis was held at the London ExCeL Arena along with seven other sports, and all competitors had an opportunity to visit the Olympic Park.

5.17.2 ETТА took part in the School Games NGB Activity Zone held at the Olympic Park on Wednesday 9th May; this was a simple and effective way to engage school children and teachers visiting the event as spectators and included a number of mini tables and was available for top table and mini tournaments.

5.17.3 Disability was a fully integrated part of the Games with all the teams including one wheelchair player, one standing player and one player with a learning disability.

## 5.18 Diversity

5.18.1 With the success of Ping! it has been decided to work with Sporting Equals as part of the follow up to Ping! Leicester where tables have been donated to some of the faith centres to start working with the communities attached to the centres.

5.18.2 Initial meetings have been very positive with the Shri Swaminarayan Temple in Leicester where it is hoped that they will purchase six tables for use in their newly opened purpose built

sports hall within the temple building.

5.18.3 In January ETТА, with Sporting Equals, showcased table tennis at a community health day held at the Rhamgarhia Sports Centre in Leeds targeting members of the Asian community.

5.18.4 ETТА along with cycling, tennis and football worked with Sporting Equals on a pilot scheme to have a Sportszone at Melas. The pilot selected was Slough where 10,000 people mainly from the Asian community attended the outdoor festival of music and food in July 2012.

## 5.19 Women and Girls

5.19.1 ETТА working with Women's Sports and Fitness Foundation (WSFF) had a stand at the Vitality Show held at Earls Court during March. The stand was supported by several members of staff and volunteers and during the four-day event attracted a lot of visitors. All the visitors' emails were collected by WSFF and have been shared with the sports involved. ETТА will be sending out information to all the participants about table tennis, Ping! and clubs.

5.19.2 The Women's Group has continued to meet throughout the year and was instrumental in supporting ETТА's presence at the Vitality Show.

## 5.20 Volunteering

5.20.1 The Volunteer Awards were held during the Senior Nationals in Sheffield with the winners and their guests being invited to a celebration lunch where they were presented with their awards. The trophies were all donated by Paul Day.

5.20.2 Winners can be found in the Awards & Thanks on page 46-47.

5.20.3 The Ping!maker offer for Sportmakers has been updated and is available on their website and, once the Ping! cities are known they will be advertised under the events section. We have about 20 people who have expressed an interest to volunteer at Ping! events since the update appeared in February 2013.

## 5.21 YST Conference

5.21.1 ETТА and ESTTA again had a presence at the YST School Sport Conference on 6th-7th February in Telford. Interest in table tennis was high. ETТА circulated a questionnaire to which 62 contacts from schools across the country responded. Key points/questions that surfaced



from speaking to people at the conference related to: outdoor tables, competition information, funding options, information on different types of table and equipment suppliers and the Young Officials Award.

**5.22 Government Announcement on PE & School Sport Funding**

5.22.1 ETTA and ESTTA have supported the YST with a joint NGB response to the Prime Minister's recent announcement to a renewed package of funding for PE and School Sport. Through a new 'Sport Premium' the Government is providing £150m in each of the next two years to support the delivery of PE and sport in primary schools.

5.22.2 This funding will be ring fenced, and will be allocated directly to primary schools across England, providing them with a dedicated resource to buy-in invaluable expertise and support. The ETTA will continue to work with the YST to help influence and encourage the inclusion of table tennis in primary schools in targeted areas.

**5.23 Safeguarding and Child Protection**

5.23.1 The Protection of Freedoms Bill received royal assent in May 2012. Parts of the Act came into place from 1st September with the rest filtering in during 2013.

5.23.2 The first change is what roles are eligible to have a check carried out with a number of roles that would have been subject to checks previously taken out of the process. The ETTA's website has been updated with the information and includes a clear flowchart

indicating which roles do require a check. Essentially all coaches still need to be checked but technical officials do not.

5.23.3 With effect from 1st January 2013 the Criminal Records Bureau ceased to exist and has been replaced by a new organisation called the Disclosure and Barring Service (DBS). In addition the checks are now not known as CRB checks but DBS checks.

5.23.4 Further changes are expected during 2013.

5.23.5 In view of the changes in the legislation the ETTA's Child Protection Policy and Guidelines have also been reviewed and updated, and the new booklet is available from the Headquarters Office or available to be downloaded on the ETTA's website.

5.23.6 DBS (formerly CRB) checks: DBS checks are now being carried out online with TMG CRB, since November 2012, which makes the system quicker and means that all document verification is being done by the Post Office Service negating the need to send personal documents in the post. There is still an option to use the paper renewal but this method will be more expensive. All queries relating to DBS checks are now being handled by TMG CRB. The online process will form part of the changes to the checking process that will be implemented later in 2013.

5.23.7 Social media: there are more and more reports coming in relating to inappropriate use of social media with accusations of abuse,

bullying and bad language. This is a concern which is affecting all sports and the Child Protection in Sport Unit (CPSU) is in the process of producing an update to its guidelines.

5.23.8 Parental behaviour: again there have been a number of complaints and reports of parents' behaviour at events in terms of their attitude towards their children and also to other children. Again the CPSU is working with four governing bodies, table tennis being one, to produce a short film clip and an information pack for sports to use as education tools.

**5.24 Child Protection and Disciplinary**

5.24.1 The ETTA member who had been suspended was found not guilty at Crown Court and, following an ETTA Disciplinary Hearing, has had his membership to ETTA reinstated and also his coach licence.

5.24.2 There have been 12 reports received over the past two months; most have been dealt with as poor practice.

5.24.3 Currently there are two cases under investigation by the police for which the members have been suspended in line with the ETTA rules to enable the investigation to proceed.

5.24.4 Sainsbury's School Games: the team for the 2012 Games in terms of safeguarding was Judy Rogers (Welfare Co-ordinator), Jill Pegram (Welfare Officer) and Jennie Bouron (Welfare Officer). There were no major issues for table tennis to deal with during the Games.

## 5.25 Regional Officers and Squads

- 5.25.1 The Regional Disability Officers have been continuing to build their regional squads and holding joint regional sessions and competitions. In addition Shaun Alvey has been working with Goradz Vecko and BTTAD to start the process of putting together an England Youth Squad of disabled players with the first camp held in 2012 including players from Yorkshire, North West, North East, West and East Midlands.
- 5.25.2 The Regional Disability Officers, the ETTA's Programme Manager and the Disability Committee produced a Disability Strategy to move disabled table tennis forward over the next four years to 2017.
- 5.25.3 Using funding received earlier this year from the Department for Education, each disability officer has been recruiting volunteers with an interest in working with disabled people to attend UKCC Level 1 and ETTA Bridging courses. The aim is to have a team of coaches in each region working with disabled people.
- 5.25.4 ETTA is working with an organisation called Interactive in London to launch a project linked to the GP referral system but aimed at disabled people. Initially the pilots will be held with Ellenborough TTC and York Gardens TTC. If they are successful the aim is to launch across London and then nationally.
- 5.25.5 The Playground to Podium programme has now been completed with the final round of County Athlete Assessment Days held over the spring and summer of 2012. It is hoped that working with CSPs on these days can be replicated in the future.
- 5.25.6 During 2012 the disability officers completed their PTTLS training (Preparing to Teach in the Lifelong Learning Sector) and successfully delivered 20 disability awareness training sessions which led to the increase in the number of Ability Clubs across England to 72 at the end of March 2013.
- 5.25.7 In October the West Midlands held the first ETTA one star disability event which was organised by the Regional Disability Officer and was very well attended. It is intended to make this an annual event and other Regional Disability Officers are planning to host similar events

during 2013. Dave Cochrane has agreed to work with the officers and act as the tournament organiser and referee.

- 5.25.8 The BTTAD Michael Hawkesworth event was held in March in Crewe and attracted the largest entry and resulted in a 25% increase in the BTTAD membership during 2013. All the regional disability officers were present and all had players participating in the event.
- 5.25.9 February saw the first meeting of a working group made up of members of the Disability Committee and one regional disability officer to look at setting up a calendar of events relating to disability to include training camps.



- 5.25.10 During the year the disability officers supported a number of major events where table tennis was showcased by ETTA's partners:
1. Inter Spinal Unit Games held at Stoke Mandeville with 200 players over the five days.
  2. English Federation of Disability Sport Festivals of Sport held at both Stoke Mandeville and Manchester.
  3. Wheelpower's National Junior Games held at Stoke Mandeville.
  4. Limbpower Annual Games.

- 5.25.11 In February ETTA's lead officer and the Regional Disability Officers piloted a new Deaf Communications Workshop for sports coach UK, it is hoped that some of the officers will go on to become tutors for the course.

## 5.26 Paralympics

- 5.26.1 The summer of 2012 and the Paralympics was a truly exciting time for disabled table tennis. One of the events where the ETTA's lead officer was invited to attend was the Paralympic Service of Dedication held at St Paul's Cathedral. As part of the service table tennis along with

wheelchair basketball were asked to demonstrate their sports. For the first and possible only time a table tennis table was set up in the nave of the cathedral where Jack Pegram and Nicko Anderson demonstrated our sport. The Lord Mayor of London did have a try along with a number of other dignitaries.

- 5.28.2 Congratulations to all the GB Paralympic Squad especially Will, Aaron, Ross, Paul, Sara and Jane who brought home the medals!!!
- 5.28.3 UK Sport has set up a focus group to work with it and Youth Sport Trust on the future legacy following the Paralympics and the impact on the Sportsability and Projectability. The ETTA's lead officer was invited to be a part of the group which had its initial meeting on 17th September.
- 5.26.4 In December the British Paralympic Association hosted a Para Fest at Guildford with all the Paralympic sports showcased over the two days of the event. ETTA and BTTAD were invited to have a presence which was organised by the ETTA's lead officer and Shaun Newcomb, South East Regional Disability Officer, ran the actual event along with help from the Local League. It was estimated that 2,000 disabled people of all ages attended the two day event. Will Bayley and Ross Wilson were present on one of the days and played a series of exhibition matches. The event was so successful that the BPA is hoping to host a number across the country during 2013. The next is being held in Sheffield at the EIS during April 2013.

## 6. Coaching & Performance

### 6.1 General

- 6.1.1 The most significant improvement to performance in England over the last year has been the appointment of Nick Jarvis as Technical Manager and Head Performance Coach. His passion for English success and his technical knowledge have influenced players and other coaches alike to believe that with the backing from across the table tennis community, England can be successful again.
- 6.1.2 Sport in this country now requires more than just an outstanding technician. In his role of Performance Programme

Manager and Head of Workforce Development, Jon Pett has brought his written and verbal communication skills to complement Nick's sport specific knowledge. In the essential dealings with outside agencies including our funding partners, Jon has added major value to the workings of the department. This is the long awaited, effective, professional leadership team now in place.

**6.2 Departmental**

6.2.1 The closeness of the link between coaching and performance was reflected in the establishment of this ETTA department. The higher the standard of our coaches the more likely it is that quality players will result. The observational evidence as seen at Youth Development training and the Regional Squad Championships this season is that the general standard at regional level of our youngest players is improving. This is mainly due to the work done in the regions by Regional Coaches. The need is now to reach down still further to local level where the quality of the early technical coaching needs to improve. Under recent changes to the UKCC table tennis qualification and the requirement for all licensed ETTA coaches to engage in Continuous Professional Development (CPD), this is now being addressed.

**6.3 Staffing**

6.3.1 The performance leadership team has worked on the player planning and organisation which has improved dramatically recently. This team is now aware of and involved in the training and competition programmes for our top seniors, juniors and cadets. Each player has an individual programme which in itself may not sound important but at the highest level it is a massive step forward. This aspect of performance leadership has been missing for too long.

6.3.2 Staff responsibilities under the leadership team are:- Jia Yi Lui with the men and junior boys, Alan Cooke with women and junior girls, Craig Bryant (cadet boys) and Steve Gertsen (cadet girls). These coaches will take these groups forward to the European Youth Championships in July. Alan has also taken on more overall responsibility for the progress of English junior players.

6.3.3 Jill Parker oversees youth development training as well as managing the ten regional coaches, and Louise Larcombe provides administrative support in her role as Performance Co-ordinator at the Sheffield office.

**6.4 Performance Panels**

6.4.1 Senior Selection Panel members are Jill Parker, Alan Cooke, Jia Yi Liu, Nick Jarvis with Peter



Charters in the chair and having a casting vote only. Jon Pett sits on the Panel without a vote.

6.4.2 Junior Selection Panel members are Alan Cooke (National Junior Coach), Alex Perry, Des Douglas, Jill Parker, Carole Moore, Nick Jarvis with Peter Charters in the chair and having a casting vote only. Jon Pett sits on the Panel without a vote.

6.4.3 Performance Planning Group members are Jon Pett, Nick Jarvis, Jill Parker, Alan Cooke, Jia Yi Lui with Peter Charters in the chair.

**6.5 Players**

6.5.1 There is now a case for cautious optimism for the future of the England teams as young players begin to emerge at the pinnacle of our domestic and international performances.

6.5.2 A 19 year old won our National Championship with a 17 year old in the semi-finals as well as winning the Under 21 title. A 14 year old took the Under 21 Women's Championship whilst other young players are appearing in the later rounds of this and other senior domestic competitions.

6.5.3 Liam Pitchford (19) looks to be coming of age whilst Sam Walker (17) and Tin-Tin Ho (14) are emerging as real international prospects for the future. All three have had impressive results in the international arena of late to support the claim that England is on the way back to achieving

international respectability by the quality of its up-and-coming players.

6.5.4 Paul Drinkhall (101) remains England's highest World ranked player but Liam (119) is closing the gap. Paul is still the highest world ranked English player since Matthew Syed in the first years of this century. Liam is only two places off being the second

such English player. The reliable, consistent, experienced Andrew Baggaley (145) is our third world ranked player. Daniel Reed (234) and Darius Knight (292) are the next two English players in the list.

6.5.5 Joanna Parker (138) and National Champion, Kelly Sibley (229), still lead the women's list but Tin-Tin Ho has moved into the third spot for an English player at 401 above Hannah Hicks (529). The search continues for young women who have ability and, most important, commitment to international table tennis success for England.

**6.6 The Masters**

6.6.1 There have been a number of 'firsts' in Masters' activities recently. This season the first Mini-Cadet Masters for Under 12 players will be staged; the Junior Masters had to be postponed and Mick Strode missed a Masters event for the first time.

6.6.2 The new Mini-Cadet Masters has been arranged for late June at the Burton Uxbridge Club. This provides England with three Masters at U18 (Junior), U15 (Cadet) and U12 (Mini-Cadet), with a three year age gap between each.

6.6.3 At the Mini-Cadet Masters, 12 boys and 12 girls will be invited to take part in this round robin competition, using the winners of the Regional Qualification U12 event (plus exemptions) in the National 11 to 14 Championship as a starting point.



- 6.6.4 The Junior Masters was postponed due to the freezing weather conditions at the venue in Burton. Fortunately Grantham College came to the rescue and was able to provide a venue at short notice to allow the event to be played in March.
- 6.6.5 The Cadet Masters was successfully staged at Burton Uxbridge in February.
- 6.6.6 Both Masters events are now second only to the Nationals in prestige but are the toughest, most challenging events in the domestic junior, cadet and now Mini-Cadet calendar. Both Grantham College and Burton Uxbridge did an outstanding job with the provision of all of the facilities required.
- 6.6.7 For the re-arranged Junior Masters, the ever present Mick Strode was taken ill only days before the event. Thanks to Diccon Gray, he and a team of young helpers, plus understanding umpires, managed the weekend superbly, although as you would expect Mick was sorely missed.
- 6.7 ITTF Hopes**
- 6.7.1 A few years ago the ITTF invited individual parents to enter their child into a 'Hopes' programme of training and competition. A number of parents did this but it was found to be expensive. The following year ITTF came to the national governing bodies for

entries to take part in 'Hopes'. This, ETTA did on a self-funded basis. Again, although we did have some entries, others found it too expensive and withdrew. It is 'hoped' that others will be interested in the future.

**6.8 High Performance Sessions (HPS)**

- 6.8.1 Grantham - Wednesday and Thursday 6pm-8-30pm  
 London - Tuesday 6pm-8-30pm  
 Cippenham - Wed 6-30pm-9pm  
 These run for 40 weeks during the season. The HPS have proved extremely successful, high intensity, good quality practice and coaching.

**6.9 Youth Development Training (YDT)**

- 6.9.1 Jill Parker is responsible for this activity which is eight weekend camps throughout the season with 18 young talented players on each camp. Carole Moore is the head coach with two regional coaches assisting and sparring partners. The regional coach normally selects a coach from his/her region to help and to improve their knowledge and experience.

**6.10 Youth Programme**

- 6.10.1 The International Youth Squads have had a number of training camps based at the EIS in Sheffield. There has been seen an improvement with most players during these camps and we are trying to create more "practice"

sessions for the players. Players need to practise with each other. Coaching and one-to-one sessions are important but you cannot beat hours on the table. This, of course, needs to be quality with good intensity.

**6.11 Youth International Competition**

- 6.11.1 At the European Youth Championships in Austria in July 2012 the standout English performance was the bronze medal won by Tin-Tin Ho in the cadet girls' singles. Helshan Weersinghe got to the last 16 of the cadet boys' singles.
- 6.11.2 James Smith was the highest English finisher in the Euro-Minis in France during August; all our young players found the standard very high.
- 6.11.3 England has been represented at the Serbian, Hungarian, Czech, French and Malta Youth ITTF events.  
 Serbian Youth – notable successes - Sam Walker, silver medal boys' singles. Helshan Weersinghe, silver medal boys' doubles.  
 Czech Youth – Tin-Tin Ho, bronze medal cadet girls' singles and gold medal cadet girls' doubles.  
 French Youth – Tin-Tin Ho, bronze medal cadet girls' singles.  
 Malta Youth – Sam Walker, gold medal boys' team, gold medal boys' singles, gold medal boys' doubles. Helshan Weersinghe,



gold medal boys' team, gold medal boys' doubles. George Downing, gold medal boys' team, silver medal boys' doubles. Tin-Tin Ho, gold medal girls' team, silver medal cadet girls' singles, bronze medal girls' singles, gold medal girls' doubles. Maria Tsaptsinos, gold medal girls' team, silver medal girls' singles, silver medal girls' doubles. Lois Peake, gold medal team, silver medal girls' doubles.

Junior and Cadet Home Nations – England won three of the four team titles: junior boys (George Downing/Sam Mabey), cadet boys (Luke Savill/Alec Ward) and cadet girls (Emily Bolton/Leticia McMullen), whilst the junior girls (Maria Tsaptsinos/Lois Peake) came second behind Wales. George Downing won the junior boys' individual title as did Emily Bolton in the cadet girls.

### 6.12 Player Reviews

6.12.1 The senior player reviews have been productive with action plans put in place for players' targets. Most of our top players are training and competing abroad; this has its difficulties but the Association has no alternatives due to funding issues. However, an urgent and pro-active approach to large club bases, with performance at the forefront, would help us to develop a strong domestic training/ competition environment.

### 6.13 Senior Home Nations

6.13.1 Gavin Evans, David McBeath, Hannah Hicks and Karina Le Fevre represented England in the Home Six Nations.

6.13.2 The men won the team event and Gavin beat David in the final of the singles' event. The women came second to Ireland in the team event and lost out to Alice Loveridge from Guernsey in the individuals.

### 6.14 Performance Men

6.14.1 Men's World Cup – as the host nation, Paul and Liam had the opportunity to enter for the experience. Although they did not come back with exceptional results, they did gain valuable experience.

6.14.2 European Championships – five players entered the competition and performed well in their different levels. Darius beat Kasper (DEN) 3-2 but lost to Par Gerell (SWE) 2-3. Danny beat Patrik (GER WR87) 3-2. Liam performed well and beat Gardos

(AUT WR32) 4-2 and was in top 32, but in the match for top 16 he lost to Filus (GER WR77) 2-4. After this championship Liam's world ranking rose from 137 to 122. Paul lost to Zhmudenko (UKR). In the doubles Paul and Liam beat the French first pair Lebesson/Mattenet 3-2, but to go into top 8 lost 1-3 to Ovtcharov (GER)/Samsonov (BLR).

### 6.15 Performance Women

6.15.1 Since finishing the 2012 Olympic Games in London the senior women's programme has been significantly scaled down due to finance.

6.15.2 The women's team have so far this season played in the European Championships in Denmark (Joanna Parker, Kelly Sibley, Tin-Tin Ho), European League (JP, KS, TTH and Hannah Hicks) and Austrian Pro Tour (JP and KS).

6.15.3 Generally performances have been as expected, though for the first time in many years Tin-Tin Ho is showing very positive signs of bridging the gap between Jo and Kelly and the rest.

### 6.16 London Olympic Games

6.16.1 The investment that UK Sport put into funding the GB table tennis team to London 2012 has now come to an end and it is back to the England national team being the total responsibility of ETTA. The magnificent London Olympics was a showcase for all the sports involved, no less for the sport of table tennis. Team GB predictably found the going difficult in such top world class company. Paul Drinkhall and Joanna Parker competed in the individual events and were joined by Liam Pitchford, Andrew Baggaley, Kelly Sibley and Ulster's Lui Na in the team matches. Results were as expected of the GB table tennis team, reaching the predicted stages, but this was a massive experience for our top players and one which should be of positive benefit to their futures.

6.16.2 The British Table Tennis Federation (BTTF) will now operate, as they did before London winning the 2012 Olympics, in selecting the GB players to take part in the European and World Olympic Qualification events.

### 6.17 Pro-Tours

6.17.1 In this year's ITTF Pro-Tour, the following players entered different Pro-Tours:

Germany - Darius, Liam, Andrew, Paul, David, Gavin

Poland - Darius, Liam, Andrew (ETTA funded)

Austria - Darius, Paul (ETTA funded)

Qatar - Liam, Andrew, Danny (half funded by ETTA).

Some of these tournaments are self-funded.

6.17.2 The outstanding performance in these events was from Liam during the Qatar Open. He beat Kim Min Seok (KOR WR34), Omar (EGY WR138) and was in the top 16, which was a first for him. During his match for top 8, he lost to Wang Hao (CHN WR3) 0-4, to improve his world ranking position and his confidence.

6.17.3 Current positions with the top four players:

Liam has signed a new contract with his club and received treatment for his injury in Germany and England (London), the latter organised by the ETTA. He has improved his training and his attitude is now more professional, he has shown a positive improvement.

Paul has also signed a new contract with his club but will need greater support.

Danny has signed with his club in Austria for next season and will be training there.

Andrew is recently training and competing in Spain and Belgium. His next season's club contract is still in discussion.

6.17.4 Since all the players are training and competing in clubs abroad, it's difficult to control their movements. Last month Nicky, Jon and Jia Yi went to Germany to observe, help with training and create a good working relationship between club and country. It is hoped that this has a positive result.

### 6.18 Commonwealth TT Championships and World Individual Championships

6.18.1 The disappointment of losing Liam Pitchford and Paul Drinkhall from the England team to compete in the Commonwealth Table Tennis Championships in New Delhi, India, is something that should be avoided in the future. The contractual arrangements with European clubs for English players will need to be legally reviewed.

6.18.2 Also to be reviewed is the timing and location of these championships; three days before the World Championships in Paris,

- staged on different continents and with potential clashes with major European club matches. This clearly creates both practical and preparation issues.
- 6.18.3 With the inclusion now of table tennis in the Commonwealth Games, the need for these championships requires consideration for the future. The status that we in England place on these championships seems not to be shared in Europe.
- 6.18.4 Results from the Commonwealth Table Tennis Championships: despite the loss of Liam and Paul from the Commonwealth Table Tennis Championships and despite many stomach problems, the teams returned home with three silver and two bronze medals. The women's team took bronze, Joanna Parker and Kelly Sibley leading the way, but 14 year old Tin-Tin Ho gained huge experience, and the still young Hannah Hicks provided value added to the team. The men's team won silver losing out to the powerful Singapore team in the final. The men's doubles silver and bronze, and the women's doubles (Parker and Sibley) silver completed our medal tally. Sam Walker and Chris Doran replaced Pitchford and Drinkhall, and having given the chance to shine they took it. Together in the men's doubles they won the silver medal behind the Singapore pair having
- outstanding table tennis. Paul Drinkhall's injury kept him out of this event.
- 6.19 Regional Coaching**
- 6.19.1 The regional coaches are continually working within the Sport England priority areas of 'sustain and excel'. Their primary responsibilities are to increase the quality of coaching (both players and coaches), talent identification/development and the management and training of regional squads in their respective regions within the player development pathway.
- 6.19.2 Katy Parker (North West) and Natalie Green (East Midlands) returned to work after maternity leave; Katy returned in June and Natalie Green in September. Katy is now on maternity leave again after having her second child in January. Brian Kean is once again holding the fort for the North West region.
- 6.19.3 Talent ID has taken place at national events as well as at local and school tournaments. The regional coaches have identified the talent scouts and events within their regions for the new season. The regional coaches are continuing to work with the clubs in their region and this gives them the opportunity to talent ID both players and coaches.
- 6.19.4 Regional assessments have taken place throughout the regions and for figures attending see figure 3.
- 6.19.5 The regional coaches have set up regional training not only on a monthly basis but for a core group of players twice a week as well. With this increase in the number of hours on the table we have seen an improvement in the standard of the players. More development sessions are taking place with coaches from the region helping out with running the sessions.
- 6.19.6 Several regional squads have travelled to different countries for training/competition, i.e. Wales, Belgium, Jersey and China. The Chinese national table tennis team also visited the Yorkshire region
- as a PR exercise and to play with the regional squad players. Many regions are now linking in with higher education for sport science support (psychology and strength and conditioning).
- 6.19.7 Coach education days have taken place throughout the regions on a variety of topics. Some regional coaches continue to work with a cluster of clubs to update them on the latest trends.
- 6.19.8 Regional training days have taken place on a monthly basis with some organising joint regional sessions/matches. Some regions joined together to deliver this day, which was seen as an opportunity to meet new coaches and share/exchange ideas. Coaches within the region are invited to attend to up-skill their knowledge and share ideas.
- 6.19.9 The regional coaches are still supporting the part and full-time coaches in their region, particularly in technical areas, as well as mentoring and helping them with a variety of other topics.
- 6.19.10 The regional coaches are qualified to tutor and assess UKCC courses and several have organised the pilot technical day to complement the level 1 course.
- 6.19.11 The regional coaches have helped out with the Performance Department to coach players in competition for both seniors and youth squads. They have coached at the following events – European

**Figure 3**

**813 players were assigned for RDT in 2012 - 663 boys & 150 girls**

Boys/Girls	North East	North West	York.	East Mid.	West Mid.	East	East	London	Southern	S. West										
U11	7	5	14	2	20	2	8	4	10	4	16	12	17	8	6	4	4	2	8	2
U12	9	2	10	3	10	3	8	5	17	5	24	10	33	8	17	4	7	1	6	3
U13	12	3	12	3	12	3	15	3	19	6	36	3	44	9	18	2	13	3	11	5
U14	16	2	10	5	17	5	14	6	21	8	22	8	48	9	14	1	12	2	16	5
<b>Total</b>	<b>44</b>	<b>12</b>	<b>46</b>	<b>13</b>	<b>59</b>	<b>13</b>	<b>45</b>	<b>18</b>	<b>67</b>	<b>23</b>	<b>98</b>	<b>33</b>	<b>142</b>	<b>34</b>	<b>55</b>	<b>11</b>	<b>36</b>	<b>8</b>	<b>41</b>	<b>15</b>

- 6.18.5 Results from the World Individual Championships: no medals in Paris although most players performed to a high standard. Joanna Parker achieved a level of performance which is encouraging for next year's Commonwealth Games in Glasgow, and again Sam Walker produced some
- beaten the top Indian duo in the semi-final. Both contributed to the men's team bronze along with Danny Reed and Andrew Baggaley. Eighteen year old Walker's outstanding result was his win over Achantha of India, ranked 26 in the world, in the team semi-finals.
- 6.19.12 As well as their involvement with the international competitions, the regional coaches attended the Olympic Games in London and Men's World Cup in Liverpool. These events gave them the opportunity to see the best players in the world compete and keep up-to-date with the modern trends.



**6.19.13 The Regional Squad**

Championships took place in Doncaster in April 2012 with the London Region victorious. This is an excellent event and the only one in the calendar where the regions compete against each other. This also provides the regional coaches and the coaches they are mentoring to come together and support the young players in their respective regions.

6.19.14 They were also held this year in April 2013 and this time the winners were the East Region.

6.19.15 In August 2012 the third three-day ETTA Summer Coaching Camp was held at Lilleshall inviting four players from each region (two boys and two girls). The ten regional coaches were in attendance and as well as the intense daily training, fitness testing also took place. It was an

excellent camp with the ratio of coaches to players 1-4. A fourth camp will take place again at Lilleshall in August 2013.

6.19.16 Aled Howell and Matt Stanforth were involved in promoting the European Qualification matches in Portsmouth and Gateshead. They organised schools exhibitions and Nick Jarvis and Alan Cooke conducted a coaching workshop.

6.19.17 Most of the regional coaches have been involved with the Ping in a variety of areas, i.e. meetings, launch, and the 'Ping Parlours'.

6.19.18 All the regional coaches have been involved with the sports coach UK 'Talent Coaches Breakfast Club'. This is a partnership with the Coaching System Support Network (CSSN) and will provide targeted CPD for our coaches. They will be able to learn from experts, share good

practice, and discuss challenges and ideas with coaches in a similar position.

6.19.19 Matt Stanforth graduated with his PG Dip from University Central Lancashire (UCLAN) in December 2012, and Natalie Green, Paul Whiting, Stephen Gertsen, Craig Bryant, Sally Shutt and Jane Barella are at various stages in their degrees/level 4.

6.19.20 A summary of the work activity for the period 1st April 2012-31st March 2013 for the 10 regional coaches is shown in figure 4.

**6.20 Regional Coaching Co-ordinators & Regional Coaching Forums**

6.20.1 There continues to be a number of Regional Coaching Co-ordinators (RCC) working at local level to support the work of the regional coaches. Not all regions have a RCC, and those that do provide

**Figure 4 Regional Coach Activity: 2012-2013**

Activity	London	South West	South	South East	West Mid.	East Mid.	East	North West	North East	York.	Totals
Distinct clubs visited	10	3	40	10	38	15	36	36	10	8	206
Club sessions visited	25	25	108	40	90	20	37	42	40	9	436
Club sessions coached	25	25	107	40	89	14	37	42	39	5	423
Regional/development squad	144	159	76	163	182	108	180	71	199	223	1,505
Regional coach education days conducted	1	1	0	1	2.5	1	3	2	51	2	64.5
Youth development & England youth squad coaching days	0	12	8	19	10	5	7	0	23	2	86
No. of international competitions	1	4	0	4	3	0	2	0	2	3	19
No. of days in international competitions	4	23	0	17	22	0	7	0	15	10	98
Coaches under official mentoring	46	26	16	24	35	18	54	21	8	12	260
Days on UKCC courses	6	3	1	3	2	0	2	0	6.5	7	30.5
UKCC Results	6	0	0	0	0	4	2	0	1	1	14
Days on ETTA Course	1	1	0	4	1	0	0	0	0	0	7
Days Talent ID Competitions	23	13	13	9	13	14	10	15	7.5	9	94.5
Meetings/days with Regions	19	12	5	4	6.5	11	6	9	10	12	94.5
Meetings/days Funding Partners	16	0	0	0	0	9	4	0	5	1	35

differing services dependent on their skill sets or strengths. The Coaching and Performance Department reviewed the role of the RCC and noted that greater support across a range of areas was needed to support coach and player development at local level. A proposal was circulated and significant discussion took place. It was decided not to implement the changes for only one role, but that a number of roles may in fact be required over a period of time.

6.20.2 In addition to the review of the RCC role a proposal was developed to introduce Regional Coaching Committees across the country. Some regions felt this inappropriate due to the existing committee structures and coaching representation that existed and so the concept was revisited. A new proposal and recommended guidelines/best practice is being developed to be discussed across the regions, asking each region to ensure that the areas requiring support are provided for, either by a new or existing committee or by the introduction of new volunteers.

#### 6.21 Coaching General

6.21.1 Without improvement in the quality of England's coaching workforce, further progress in our players' level of international performance will be inhibited. Young players will continue to go

abroad only to feel technically inferior to their international opponents. The number of high performance coaches is limited and those with the up-to-date knowledge of what is required for our players to succeed at international level is minimal.

#### 6.22 HQ Staffing

6.22.1 As well as his performance responsibilities, Jon Pett heads up this area of the Department's activities. In the office at Hastings, Dave Berriman is the National Coaching Officer with Collette Sargent the National Coaching Assistant.

#### 6.23 United Kingdom Coaching Framework (UKCF)

6.23.1 ETTA has been implementing the UKCF since 2006 and is making significant progress. Up-skilling of the coaching workforce, implementation and improvement of the UKCC endorsed qualification framework, development of coach licensing and new developments in developing coaches for specific environments (e.g. high performance) continue to be the focus. ETTA continues to strive towards creating a world class coaching system for the future but there is much work to do and the support of all within the sport is needed. Sports coach UK is very supportive of ETTA's work in this area and now offers the benefit

of three advisory staff. Projects continue to be offered to ETTA to support the growth of the sport, engage with new markets, and ensure that future offers are tailored to the customer's needs.

6.23.2 ETTA staff attended the UK Coaching Summit in London in 2012 where new developments and best practice from across sport and other industries were evident. Learning from the summit has gradually been implemented across ETTA programmes.

#### 6.24 Coach Education - UKCC

6.24.1 In October 2012 National Council voted to extend the deadline for bridging until 14th November 2013. This is the second time that the deadline has been extended. To date approximately 352 coaches have either completed or are in the process of bridging from ETTA qualifications to UKCC endorsed 1st4Sport Level 2 certificate. There are, however, a total of 78 coaches who began their bridging course but are now outside their registration period. Coaches currently bridging have only a two-year registration period from the start date of their course by which to complete the course.

6.24.2 The UKCC endorsed 1st4Sport course programme completed in 2012/3 continues to grow see figure 5.

6.24.3 This year only one UKCC Level 3 course was scheduled under a



**Figure 5**

\*Post-Graduate Diploma in Elite Coaching Practice = Helen Lower

UKCC Course	Complete	In Progress	Scheduled	Cancelled	Learner Registrations	Learner Qualified	Learner Incomplete
UKCC Level 1	26	4	6	2	309	130	204
UKCC Level 2	2	3	0	4	45	34	9
UKCC Level 3	1	0	1	1	0	6	3
PostGrad Diploma	1	1	1	0	3	1*	2
UKCC Level 2 Bridging	5	1	2	0	46	53	37
Totals	35	9	10	7	403	224	255

revised format but at a lower cost (reduced from £1,100 to £800 per learner). Sixteen coaches from across Britain attended (two from Scotland and two from Wales), highlighting the improving co-operation between the Home Countries. Once this group has completed the course a total of 50 coaches will have achieved this qualification. Inclusion on future courses is subject to nomination by the regional coaches and now features a coach observation and action plan process, designed to help the decision making process or highlight areas for development of coaches wishing to undertake the L3 qualification; this process will continue until further notice and candidates will have to apply directly to their regional coach who will then arrange the coach observation.

6.24.4 The Postgraduate Diploma/UKCC Level 4 programme continues to develop and has witnessed table tennis coaches complete both the High Performance and Talent Development pathways. Currently a number of regional coaches are enrolled on the programme, with Natalie Green (East Midlands), Stephen Gertsen (East), Paul Whiting (South West) and Craig Bryant (South East) due to complete later this year, and Sally Shutt (Yorkshire) and Jane Barella (London) having registered in September 2012 and due to graduate in 2014. The programme is delivered in conjunction with UCLan (University of Central Lancashire) and now engages coaches from an increasing number of sports with rugby league, hockey, basketball, squash, motor sport and cycling now part of the current cohort with table tennis coaches. This cross-sport collaboration is extremely important in coach development and serves to challenge current practice and thinking, encouraging coaches to reflect, analyse and innovate to deliver high quality coaching.

Selection of candidates rests with the ETTA Coaching Department; interested coaches should contact the Coaching and Performance Department.

**6.25 Leadership Awards**

6.25.1 ETTA has recently re-joined the Sports Leaders UK (SLUK) qualification network. SLUK offers a series of generic leadership qualifications from levels 1-3, and sports have the option to provide a three-hour bolt-on course. SLUK currently delivers its courses to over 150,000 young people, providing a large market for ETTA to engage with and increase the number of young volunteers working with this great sport. In addition ETTA remains part of the Change4Life programme where over 750 schools chose to set up table tennis clubs and increase the number of 14-19 year olds playing.

**6.26 Disclosure & Barring Service (formerly Criminal Records Bureau (CRB) Checks)**

6.26.1 The Criminal Records Bureau has been renamed the Disclosure & Barring Service (DBS). The introduction of regulated activity (details on the ETTA website) has created some confusion but coaches and volunteers should continue to seek a valid DBS check every three years. Checks are now processed online by TMG and details/application procedures can be found on the ETTA website. ETTA no longer processes any checks.

**6.27 Coach Licence Scheme**

6.27.1 ETTA continues to operate its Coach Licence Scheme offering a series of benefits and investing the proceeds back into coach development. The scheme is recognised by sports coach UK as one of the most successful in terms of the number of active coaches licensed, something the ETTA should be proud of. Benefits continue to be developed and the new online coach management system (central to

the management of the licence scheme) will be delivered to coaches in 2013. The information below shows the current situation regarding the number of licensed coaches at 689, representing an increasing number of UKCC qualified coaches (59.36%). Once those coaches who hold an ETTA qualification and are bridging, have completed, this percentage will be nearer 80% of the overall licence holders.

Coach Licences	Licences issued (since 14.11.12)
UKCC	409
Old ETTA	277
Foreign	3
Total	689



6.27.2 At a meeting of the National Council in April of this year, it was decided that all ETTA coaches, whether holding a UKCC or ETTA coaching qualification, had to be in possession of a current Coach Licence. Apart from the need to have current CRB, Safeguarding and First Aid awards, there would also be a requirement to attend annual Continuous Professional Development (CPD) courses.

**6.28 Butterfly Skills Table Tennis Programme**

6.28.1 Sales of resources for the year 1st April 2012 to 31st March 2013 were:

- Manuals (includes posters and Awards booklet) = 70
- Awards = 838



# International Matters

## 7. International Matters

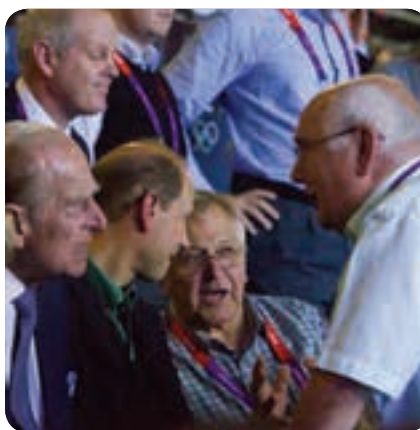
### 7.1 British Table Tennis Federation Limited (BTTF)

7.1.1 The British Table Tennis Federation is responsible for the Great Britain and NI elite programme. It operates as a limited company with a board elected every four years covering the Olympic cycle and a selection panel responsible for athletes' participation in both Olympic qualification events and the Olympic Games. It liaises with the British Olympic Association, UK Sport including negotiating funding, and involved in both the UK Coaching Framework and the UK School Games.

7.1.2 An audit took place and a number of governance changes were approved by the AGM and Board including various policies, terms in office and non-executive directors in line with the audit recommendations.

7.1.3 The announcement by UK Sport of no initial award for table tennis on the project 'Road to Rio (2016)' was clearly very disappointing although not unexpected due to the "No Compromise" policy including the result of the BTTF appeal, albeit further submission for funding can be made annually, starting in December 2013.

7.1.4 The Chairman is a member of the British Olympic Committee (BOA) elected by the BTTF Board and was involved with the London 2012 Olympic Games which everyone agrees was a fantastic success, and a number of legacy projects have been started by the Government and its funding agencies.



7.1.5 The Board approved the document submitted by the BOA in regard to its Corporate Strategy for the next Olympic cycle.

7.1.6 The BTTF International Influence Programme is supported by UK Sport and delegates have attended a number of meetings. A plan for the 2013-2014 period has been approved by the Board and submitted to UK Sport.

### 7.2 International Table Tennis Federation (ITTF)

7.2.1 The Chairman attended the AGM, Board of Directors and a number of other meetings including some with the ITTF President and others in Paris during the World Individual Championships (WIC). The elections of the ITTF President and his Executive Board took place and details were put on the ETTF website.

7.2.2 Delegates from England attended meetings in Paris involving the equipment, nomination and women's committees as well as seminars for development programmes. In addition the ETTF Chief Executive arranged meetings including discussions with China in regard to the potential for setting up an elite table tennis centre in the UK.

7.2.3 Nominations were submitted from England to the ITTF for positions on the Equipment (Peter Bradley), Veterans (Martin Clark), Umpires and Referees Committees (Stuart Sherlock) and the Board of Directors (Alex Murdoch).

7.2.4 A number of resolutions and propositions were discussed and voted on during the WIC at the ITTF AGM and Board of Directors meetings; details will be published when available.



7.2.5 The 2014 World Team Championships will take place in Tokyo, Japan, from 28th April to 5th May.

**7.3 European Table Tennis Union (ETTU)**

7.3.1 England delegates attended the ETTU EGM and board meetings in Paris during the World Individual Championships and passed a number of propositions.

7.3.2 The European Table Tennis Union Ordinary Congress took place during the 2012 European Championships in Herning (Denmark) on 17th October 2012.

7.3.3 Stefano Bosi was re-elected President and the Executive Board was elected, including a new Deputy President Jean-Francois Kahn from France.

7.3.4 Martin Clark was unanimously accepted by the Congress as the ETTU financial expert.

7.3.5 Alex Murdoch was elected as one of the eight ITTF Board of Directors members subject to confirmation at the ITTF AGM.

7.3.6 The nominations from England were elected for the following Committees:

- Technical - Steve Welch
- Veterans - Eileen Shaler
- Para TT - Alex Murdoch
- Ranking - Malcolm Macfarlane
- Umpires & Referees - Mick Strode
- WWP - Val Murdoch

7.3.7 The 2013 European Championships will take place in Schwechat, Austria, from 4th to 13th October.

**7.4 Commonwealth**

7.4.1 The next Commonwealth Games will take place in Glasgow from 23rd July to 3rd August 2014 and table tennis has been confirmed as one of the selected sports.

7.4.2 The Commonwealth Table Tennis Federation (CTTF) Championships took place in New Delhi, India, from 5th May to 10th May 2013.

7.4.3 The general meeting and management meeting took place at both the WIC in Paris and the CTTF Championships in New Delhi, and were attended by ETTA delegates.





# Awards & Thanks

## Chairman's special thanks

On behalf of the ETTA my special thanks go to my Board who have served our great sport over the last 10 years in a dedicated and committed way, working long voluntary hours for table tennis.

To all the committee chairmen and committee members whose commitment and dedication to our sport, despite the workload, has been done professionally and selflessly.

In recent years all NGBs have faced and continue to face a changing environment, with additional requirements from the Government and its funding partners, in terms of governance, monitoring and reporting to them the agreed outcomes, which our volunteers take on board to ensure that table tennis continues to grow and prosper.

To the hardworking ETTA staff and in particular to Richard Yule, our Chief Executive, and I wish him well in his retirement, for his significant contribution and efforts with our funding

partners Sport England, UK Sport and the Youth Sport Trust. His contribution and that of all the staff has made a significant difference to the successful growth and development of table tennis across England.

To our trade suppliers and local councils, especially Joola, Butterfly, Sheffield, Hull, Liverpool and Preston Councils, together with additional partners such as the Jack Petchey Foundation, Fred Perry and the Premier League football clubs, for their financial support and assistance over the last 12 months on behalf of table tennis.

Last but not least are our volunteers and technical officials working at club, league, county, regional and national level every day on behalf of our sport and its members. Without these volunteers our great sport could not function so my thanks, and I am sure yours, thanks go to them all.

## Coaching & Development Awards

- **National Coach of the Year**  
Maria Ingles
- **National Young Coach of the Year**  
Ben Barlow
- **Regional Coach of the Year**  
Mike Pantin - London  
Charlie Childs - South  
John Jones - West Midlands  
Graham Slack - South West  
Sue Harper - North West  
Maria Ingles - East  
Gordon Fearn - East Midlands  
Tim Holtam - South East
- **Regional Young Coach of the Year**  
Bradley King - South  
Ed Freeman - West Midlands  
Stephen Foster - South West  
Sam Rock - East  
Paul Johnson - East Midlands  
Paul Bergin - South East  
Ben Barlow - Yorkshire
- **Young Volunteer of the Year**  
Jordan Bone
- **Junior Personality of the Year**  
Lucie Bouron
- **Adult Volunteer of the Year**  
Lindsey Dare
- **Unsung Hero Award**  
Colin Dyke





### PremierClub Awards

- National PremierClub of the year  
Halton TTC
- Regional PremierClub of the year  
Britannia TTC - East  
Ellenborough TTC - London  
Burton Uxbridge TTC - West Midlands  
Colin Deaton TTC - East Midlands  
Woolwell TTC - South West  
Brighton TTC - South East  
Cramlington TTC - North East  
Halton TTC - North West  
Scarborough TTC - Yorkshire

### Tom Blunn fund

The following officials received grants

- John Mackey
- Eric Pentland
- Lynda Reid
- Derek Sherratt
- Russell Sutcliffe

### Ivor Montagu Junior fund

The following officials received grants

- Carl Baldry
- Sophie Barlow
- Toby Bartram
- Nathan Butler
- Joe Clark
- Janay Gibson
- Liam Grant
- Lucie Hancock
- Molly Hancock
- Adam Harrison
- Tin-Tin Ho
- Naomi Jackson
- Yolanda King
- Paul Nash
- Lois Peake
- Alec Ward
- Joshua Weatherby

### Swaythling Club Award

- Chloe Whyte

### Honours bestowed on Members at AGM

- Vice-Presidents  
Jia Yi Liu  
Brian Skinner  
Steve Welch
- Victor Barna Award  
Liam Pitchford
- The Johnny Leach MBE Most Improved England Player of the Year Award  
Jessica Dawson
- Ivor Montagu Award  
Jim Kenny
- Malcolm Scott Award  
Richard Yule
- Leslie Forrest Memorial Trophy  
Joan Rushton
- AK Vint OBE Staff Award  
Jon Pett
- Mike Watts Achievement Award  
Lois Peake/George Downing



### Maurice Goldstein Awards

- Janice Pinchen  
Hinckley TTA
- Keith Walton  
Didcot TTL
- Tim Pett  
Didcot TTL
- Edna Fletcher  
Great Yarmouth TTL
- Margaret Pugh  
Isle of Thanet TTL
- Alan Peek  
Lowestoft TTL
- Jim Higham  
Preston TTL
- Geoffrey Cadwallader  
Reading TTL
- Colin Wiles  
Sittingbourne TTL
- John MacGregor  
Wembley/Harrow TTL



# Results

## European Youth Championships

Austria – July 2012

<b>Junior Boys</b>	England v Czech Republic	loss	0-3
	England v Romania	win	3-2
	England v Hungary	loss	2-3
	England v Serbia	loss	2-3
	England v Belarus	win	3-1
	England v Sweden	loss	2-3
	England v Slovakia	loss	0-3
	England v Russia	loss	0-3
	England v Serbia	loss	0-3
	<b>Junior Girls</b>	England v San Marino	win
England v Switzerland		loss	2-3
England v Finland		win	3-1
England v Norway		loss	1-3
England v Portugal		win	3-0
<b>Cadet Boys</b>	England v Turkey	loss	2-3
	England v Estonia	win	3-1
	England v Sweden	loss	1-3
	England v Hungary	loss	2-3
	England v Denmark	loss	1-3
	England v Italy	loss	2-3
	England v Netherlands	loss	0-3
	England v Portugal	win	3-1
	England v Greece	loss	2-3
	England v Finland	win	3-1
<b>Cadet Girls</b>	England v Latvia	loss	0-3
	England v Switzerland	win	3-2
	England v Luxembourg	win	3-0
	England v Azerbaijan	win	3-0

## European Championships Qualifications

September 2012 – March 2013

<b>Men</b>	England v Slovakia	win	3-1
	England v Romania	loss	1-3
	England v Netherlands	win	3-0
	England v Bulgaria	win	3-1
	England v Czech Republic	loss	0-3
<b>Women</b>	England v Germany	loss	0-3
	England v Romania	loss	1-3
	England v Russia	loss	0-3
	England v Spain	loss	0-3
	England v Czech Republic	loss	1-3

## Serbian Junior & Cadet Open

Serbia – October 2012

<b>Junior Boys</b>	England v Serbia	win	3-1
	England v Hungary	loss	0-3
	England v Romania	loss	2-3
<b>Cadet Boys</b>	England A v Russia	loss	0-3
	England A v France	loss	1-3
	England A v Montenegro	win	3-1
	England B v Sweden	loss	1-3
	England B v Belarus	win	3-2
	England B v France	win	3-1
	England B v Greece	loss	0-3

## Senior 6 Nations

Guernsey – November 2012

<b>Men</b>	England v Guernsey	win	3-0
	England v Jersey	win	3-0
	England v Scotland	win	3-0
	England v Wales	win	3-1
	England v Ireland	win	3-1
<b>Women</b>	England v Guernsey	win	3-2
	England v Jersey	win	3-0
	England v Scotland	win	3-0
	England v Wales	win	3-0
	England v Ireland	loss	1-3

## Hungarian Junior Open

Tata – November 2012

<b>Junior Boys</b>	England v Hungary	win	3-1
	England v Lithuania	win	3-0
	England v Slovakia	loss	0-3
<b>Junior Girls</b>	England/Canada v Chinese Taipei	loss	0-3
	England/Canada v Slovakia	win	3-2

## Czech Junior & Cadet Open

Hodonin – February 2013

<b>Junior Boys</b>	England v Hungary	win	3-1
	England v Czech Republic	win	3-1
	England v Slovakia	loss	1-3
<b>Junior Girls</b>	England v Russia	loss	1-3
	England v Czech Republic	loss	0-3
	England v Croatia/Romania	loss	1-3
<b>Cadet Boys</b>	England v Greece	win	3-2
	England v Czech Republic	win	3-1
	England v Slovenia	loss	0-3
<b>Cadet Girls</b>	England v Poland	loss	1-3
	England v Croatia	loss	0-3
	England v Australia/Czech Rep	loss	2-3
	England v Belarus	loss	1-3

**French Junior & Cadet Open**

Metz – March 2013

<b>Junior Boys</b>	England v Switzerland	win	3-0
	England v Netherlands	loss	0-3
	England v Germany	loss	2-3
<b>Cadet Boys</b>	England v Switzerland	win	3-1
	England v Austria	win	3-2
	England v France	win	3-2
	England v Germany	loss	0-3
<b>Cadet Girls</b>	England v Luxembourg	win	3-1
	England v Belgium	win	3-1
	England v France	loss	2-3*
	England v France	loss	2-3**

**Junior & Cadet 6 Nations**

Preston – March 2013

<b>Junior Boys</b>	England v Guernsey	win	5-0
	England v Ireland	win	5-0
	England v Isle of Man	win	5-0
	England v Scotland	win	4-1
	England v Wales	win	4-1
<b>Junior Girls</b>	England v Guernsey	win	5-0
	England v Ireland	win	3-2
	England v Scotland	win	5-0
	England v Wales	loss	2-3
<b>Cadet Boys</b>	England v Guernsey	win	5-0
	England v Ireland	win	5-0
	England v Isle of Man	win	5-0
	England v Scotland	win	3-2
	England v Wales	win	4-1
<b>Cadet Girls</b>	England v Guernsey	win	5-0
	England v Ireland	win	4-1
	England v Scotland	win	3-2
	England v Wales	win	5-0

**Malta Junior and Cadet Open**

Cottenera – April 2013

<b>Junior Boys</b>	England v Qatar	win	3-0
	England v Malta	win	3-0
	England v Sweden	win	3-0
	England v Slovakia	win	3-0
	England v Norway	win	3-1
<b>Junior Girls</b>	England v Malta	win	3-0
	England v Poland	win	3-1
	England v Denmark/Czech Rep	win	3-0
	England v Sweden	win	3-0
<b>Cadet Boys</b>	England v Sweden	win	3-0
	England v Malta	win	3-0
	England v Greece	loss	1-3
	England v Belarus	loss	1-3

**Commonwealth Championships**

New Delhi – May 2013

<b>Men</b>	England v Malaysia	win	3-1
	England v New Zealand	win	3-0
	England v Canada	win	3-0
	England v Wales	win	3-0
	England v Singapore	loss	0-3
	England v Australia	win	3-0
	England v India	loss	2-3
<b>Women</b>	England v New Zealand	win	3-0
	England v Wales	win	3-0
	England v Australia	win	3-1
	England v Malaysia	win	3-1
	England v Sri Lanka	win	3-0
	England v India	win	3-2
	England v Singapore	loss	0-3

**Polish Junior & Cadet Open**

Wladyslawowo – May 2013

<b>Junior Boys</b>	England v Japan C	loss	2-3
	England v Poland	loss	2-3
<b>Cadet Boys</b>	England v Werner Schlager Academy	loss	0-3
	England v Romania/Czech Rep	win	3-0
	England v Sweden	loss	0-3
<b>Cadet Girls</b>	England A v Poland D	win	3-1
	England A v Finland	win	3-0
	England A v Hungary A	win	3-2
	England A v Serbia	loss	2-3
	England B v Belarus	loss	1-3
	England B v Belgium	loss	0-3
England B v Sweden A	loss	1-3	

\* Group

\*\* Last 8



## English Senior National Championships

### Sheffield – March 2013

Men's Singles	Paul Drinkhall (Cv)
Women's Singles	Kelly Sibley (Wa)
Men's Doubles	P Drinkhall (Cv)/L Pitchford (Dy)
Women's Doubles	J Parker (Sy)/K Sibley (Wa)
Mixed Doubles	D Knight (Sy)/K Sibley (Wa)
Under 21 Men	Sam Walker (Ng)
Under 21 Women	Tin-Tin Ho (Mi)
Veteran Men	Lawrence Trumpauskas (E)
Veteran Men's Doubles	M O'Driscoll (He)/P Beck (K)

## English Junior & Cadet National Championships

### Hatfield - November 2012

Junior Boys' Singles	Sam Walker (Ng)
Junior Girls' Singles	Tin-Tin Ho (Mi)
Junior Boys' Doubles	I Morais (Mi)/D Lawrence (K)
Junior Girls' Doubles	T Ho (Mi)/M Tsaptinos (Bk)
Junior Mixed Doubles	H Weerasinghe (Sx)/T Ho (Mi)
Cadet Boys' Singles	Marcus Giles (Sy)
Cadet Girls' Singles	Tin-Tin Ho (Mi)
Cadet Boys' Doubles	T Jarvis (Li)/L Savill (K)
Cadet Girls' Doubles	T Ho (Mi)/E Bolton (La)

## English Under 11-14 National Championships

### Tipton – June 2013

Under 11 Boys	Ethan Walsh (He)
Under 11 Girls	Molly Hancock (St)
Under 12 Boys	Harry Dai (Y)
Under 12 Girls	Denise Payet ( Mi)
Under 13 Boys	Alex Ramsden (Np)
Under 13 Girls	Kate Cheer (Sx)
Under 14 Boys	Tom Jarvis (Li)
Under 14 Girls	Denise Payet (Mi)
Under 14 Boys' Doubles	T Jarvis (Li)/L Savill (K)
Under 14 Girls' Doubles	Z Hall (Mi)/D Payet ( Mi)

## Cadet Masters

### Burton – February 2013

Cadet Boy	Luke Savill (K)
Cadet Girl	Tin-Tin Ho (Mi)

## Junior Masters

### Grantham – March 2013

Junior Boy	Sam Walker (Ng)
Junior Girl	Tin-Tin Ho (Mi)

## Grand Prix

Men's Singles	Chris Doran (Np)
Women's Singles	Karina Le Fevre (Cv)
Men's Band 1	Stephen Beerling (K)
Women's Band 1	Yolanda King (Sx)
Men's Band 2	Danny Lawrence (K)
Women's Band 2	Sue Collier (Ch)
Men's Band 3	Stephen Joslin (E)
Women's Band 3	Zoe Cheeseman (Y)
Men's Band 4	Chris Morshead (JEY)
Women's Band 4	Rebecca Bayley (IOM)
Men's Band 5	Gabriel Achampong (Mi)
Men's Band 6	Gabriel Achampong (Mi)
Under-21 Men's Singles	Paul McCreery (IRL)
Under-21 Women's Singles	Yolanda King (Sx)
Open Doubles	Chris Doran (Np)
Veteran Singles	Jimmy Walsh (He)

## Senior British League

Premier Division	B-BATT Pavilion I
Division 1 North	Speedwell Chesterfield
Division 1 South	Greenhouse Progress I
Division 1 South/West	Bournemouth Sports
Division 2 North	Northfield
Division 2 South/East	Woolwell I
Division 2 South/Midlands/West	Woodfield II
Division 3 North	Hartlepool I
Division 3 South/East	Sycamore III
Division 3 South/Midlands/West	Bristol Table Tennis Academy
Division 4 North	Grimsby Mariners
Division 4 South/East-West	London Academy
Division 4 South/Midlands/West	Cardiff City
Division 5 North	Formby II





### Women's British league

Premier Division	Ormesby
Division 1	Poole Ladies
Division 2	Halton TTC 2
Division 3	AICES
Division 4	Formby

### Veterans' British league

Premier Men	St Neots
Premier Women	Bribar Bunch
Division 1A Men	Custom Table Tennis
Division 1B Men	Draycott and Long Eaton 1
Division 1 Women	BATTS PPP
Division 2A Men	Fullmarks
Division 2B Men	Team Ecosse
Division 2 Women	Milton Keynes Girls

### Junior British league

Premier Boys	BBATT 1
Premier Girls	Burton Uxbridge 1
Division 1 Boys	BATTS A
Division 1 Girls	Draycott East Midland Girls 1
Division 2A Boys	Crusaders
Boys Division 2B	Irish Boys
Division 2 Girls	Ulster A
Division 3A Boys	Greenhouse Ernest Bevin College 1
Division 3 Girls	Ulster B
Division 3B Boys	UCD Dublin
Division 4A Boys	Fusion
Division 4B Boys	Pompey

### Veterans' National league

Division 1A Men	OLOP1
Division 1B Men	Ormesby
Division 2A	Reading YMCA
Division 2B	Ashford

### County Championships – Champions

	Cadet	Junior	Senior	Veteran	Over 60
Premier	Lancashire	Middlesex 1	Middlesex 1	Yorkshire 1	Yorkshire 1
Division 1A	Yorkshire	Cleveland	Leicestershire 1	Hertfordshire 1	Cheshire 1
Division 1B	Warwickshire	Surrey 1	Dorset 1	Dorset 1	Hampshire
Division 1C	Surrey				
Division 2A		Lancashire 1	Lancashire	South Yorkshire	
Division 2B		Cornwall 1	Worcestershire	Wiltshire 1	
Division 2C		Staffordshire 1	Middlesex 2		
Division 2D		Surrey 2	Surrey 2		
Division 3A				Staffordshire	
Division 3B				Leicestershire 2	
Division 3C				Essex 3	
Division 3D				Oxfordshire 2	
Division 4A				Derbyshire	
Division 4B				Surrey 4	
Division 4C				Kent 4	
Division 4D				Sussex 4	



# Statement of Accounts

For The Year Ended 31 March 2013  
English Table Tennis Association Limited

7361/825/MGC  
(17.06.13)

## Pages

- 1** Directors' Report
- 2** Independent Auditors' Report
- 3** Income and Expenditure Account
- 4** Balance Sheet
- 5** Notes to Financial Statements
- 11** Appendix
- 12** Notes to Appendix



# English Table Tennis Association Limited

## Directors' Report

For The Year Ended 31 March 2013

The directors present their report and financial statements for the year ended 31 March 2013.

### Principal activities

The principal activity of the company continued to be that of acting as the national governing body in England for the sport of table tennis.

### Directors

The following directors have held office since 1 April 2012

A. N. MURDOCH  
P. R. BRADLEY  
M. G. CLARK, FCCA

### Directors' interests

The company has no share capital and no directors have any financial interest in the company.

### Statement of directors' responsibilities

The directors are responsible for preparing the Directors' Report and the financial statements in accordance with applicable law and regulations.

Company law requires the directors to prepare financial statements for each financial year. Under that law the directors have elected to prepare the financial statements in accordance with United Kingdom Generally Accepted Accounting Practice (United Kingdom Accounting Standards and applicable law). Under company law the directors must not approve the financial statements unless they are satisfied that they give a true and fair view of the state of affairs of the company and of the surplus or deficit of the company for that year. In preparing these financial statements, the directors are required to:

- select suitable accounting policies and apply them consistently;
- make judgements and estimates that are reasonable and prudent;
- prepare the financial statements on the going concern basis unless it is inappropriate to presume that the company will continue in business.

The directors are responsible for keeping adequate accounting records that are sufficient to show and explain the company's transactions and disclose with reasonable accuracy at any time the financial position of the company and enable them to ensure that the financial statements comply with the Companies Act 2006. They are also responsible for safeguarding the assets of the company and hence for taking reasonable steps for the prevention and detection of fraud and other irregularities.

In so far as the directors are aware:

- there is no relevant audit information (information needed by the company's auditors in connection with preparing their report) of which the company's auditors are unaware, and
- the directors have taken all the steps that they ought to have taken to make themselves aware of any relevant audit information and to establish that the company's auditors are aware of that information.

These financial statements have been prepared in accordance with the provisions applicable to companies subject to the small companies' regime.

On behalf of the board



R. Yule  
Secretary

Date: 25 May 2013



## English Table Tennis Association Limited

**Independent Auditors' Report**

For The Year Ended 31 March 2013

**Independent auditors' report to the members of English Table Tennis Association Limited**

We have audited the financial statements of English Table Tennis Association Limited for the year ended 31 March 2013 which comprise the Income and Expenditure Account, the Balance Sheet and the related notes. The financial reporting framework that has been applied in their preparation is applicable law and the Financial Reporting Standard for Smaller Entities (effective April 2008) (United Kingdom Generally Accepted Accounting Practice applicable to Smaller Entities).

This report is made solely to the company's members, as a body, in accordance with Chapter 3 of Part 16 of the Companies Act 2006. Our audit work has been undertaken so that we might state to the company's members those matters we are required to state to them in an auditors' report and for no other purpose. To the fullest extent permitted by law, we do not accept or assume responsibility to anyone other than the company and the company's members as a body, for our audit work, for this report, or for the opinions we have formed.

**Respective responsibilities of directors and auditors**

As explained more fully in the Directors' Responsibilities Statement set out on page 1, the directors are responsible for the preparation of the financial statements and for being satisfied that they give a true and fair view. Our responsibility is to audit and express an opinion on the financial statements in accordance with applicable law and International Standards on Auditing (UK and Ireland). Those standards require us to comply with the Auditing Practices Board's (APB's) Ethical Standards for Auditors.

**Scope of the audit of the financial statements**

An audit involves obtaining evidence about the amounts and disclosures in the financial statements sufficient to give reasonable assurance that the financial statements are free from material misstatement, whether caused by fraud or error. This includes an assessment of: whether the accounting policies are appropriate to the company's circumstances and have been consistently applied and adequately disclosed; the reasonableness of significant accounting estimates made by the directors; and the overall presentation of the financial statements.

**Opinion on the financial statements**

In our opinion the financial statements:

- give a true and fair view of the state of the company's affairs as at 31 March 2013 and of its surplus for the year then ended;
- have been properly prepared in accordance with United Kingdom Generally Accepted Accounting Practice applicable to Smaller Entities; and
- have been prepared in accordance with the requirements of the Companies Act 2006.

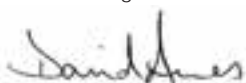
**Opinion on other matters prescribed by the Companies Act 2006**

In our opinion the information given in the Directors' Report for the financial year for which the financial statements are prepared is consistent with the financial statements.

**Matters on which we are required to report by exception**

We have nothing to report in respect of the following matters where the Companies Act 2006 requires us to report to you if, in our opinion:

- adequate accounting records have not been kept, or returns adequate for our audit have not been received from branches not visited by us; or
- the financial statements are not in agreement with the accounting records and returns; or
- certain disclosures of directors' remuneration specified by law are not made; or
- we have not received all the information and explanations we require for our audit; or
- the directors were not entitled to prepare the financial statements in accordance with the small companies regime and take advantage of the small companies' exemption in preparing the directors' report.



David Ames (senior statutory auditor)  
For and on behalf of Manningtons  
Chartered Accountants and Statutory Auditors  
Date: 14 June 2013

7-9 Wellington Square  
Hastings  
East Sussex  
TN34 1PD

English Table Tennis Association Limited

**Income and Expenditure Account**

For The Year Ended 31 March 2013

**Turnover**

Administrative expenses

**Operating(deficit)/surplus**

Other interest receivable and similar income

**Surplus on ordinary activities before taxation**

Taxation

**Surplus on ordinary activities after taxation**

Notes	2013 £	2012 £
2	5,345,399	5,217,527
	(5,326,353)	(5,198,870)
3	19,046	18,657
4	11,991	7,925
	31,037	26,582
5	2,398	1,585
10	28,639	24,997



**Balance Sheet**

As at 31st March 2013

	Notes	2013		2012	
		£	£	£	£
<b>Fixed Assets</b>					
Tangible assets	6		48,747		73,582
<b>Current Assets</b>					
Stocks	7	23,598		20,474	
Debtors	8	204,354		216,906	
Cash at bank and in hand		963,351		1,044,905	
		1,191,303		1,282,285	
<b>Current Liabilities</b>					
Creditors: amounts falling due within one year	9	646,114		818,900	
<b>Net Current Assets</b>					
			545,189		463,385
<b>Net Assets</b>					
			593,936		536,967
<b>Represented by:</b>					
<b>Reserves</b>					
Income and expenditure account	10		517,865		489,226
Testimonial Funds	11		45,271		47,741
Performance Fund			30,800		0
			593,936		536,967

These accounts have been prepared in accordance with the special provisions of Part 15 of the Companies Act 2006 and the Financial Reporting Standard for Smaller Entities (effective April 2008) relating to small companies. The financial statements were approved by the board on 25th May 2013 and were signed on their behalf by:



Director M. G. Clark, FCCA



Director A. N. Murdoch

Registration number 04268058

## Notes to the financial statements

For The Year Ended 31 March 2013

### 1. Accounting policies

#### 1.1 Accounting convention

The financial statements are prepared under the historical cost convention and the Financial Reporting Standard for Smaller Entities (effective April 2008). The directors have adopted a format for the income and expenditure account that is considered more suitable than the format laid down in the Companies Act 2006.

#### 1.2 Limited liability status

The company is limited by guarantee and is a non-profit making body. In the event that the company is wound up and funds are insufficient to pay creditors, members each guarantee to pay such amount as may be required not exceeding £10.

#### 1.3 Turnover

Turnover represents amounts receivable from members affiliation fees, goods and services net of VAT, grants receivable from Sport England (including Lottery Grants) and income associated with events and competitions and sundry other activities.

#### 1.4 Grants received (see Note 13)

The Sport England Core Funding Grant is shown in full as it is a contribution towards ETTA expenditure. Other Grants are matched against related expenditure as a surplus should not occur from these grants. The exception to this is where the English Table Tennis Association Limited makes a contribution to a specific programme and then the expenditure will exceed the income by the value of the contribution made.

#### 1.5 Tangible fixed assets and depreciation

Tangible fixed assets are stated at cost less depreciation. Depreciation is provided at rates calculated to write off the cost less estimated residual value of each asset over its expected useful life, as follows:

Fixtures and fittings, equipment, and vehicles	25% - straight line on cost
--	-----------------------------

#### 1.6 Leasing

Any rentals payable under operating leases are charged against income on a straight line basis over the lease term.

#### 1.7 Stock

Stock is valued at the lower of cost and net realisable value.

#### 1.8 Foreign currency transaction

Monetary assets and liabilities denominated in foreign currencies are translated into sterling at the rates of exchange ruling at the balance sheet date. Transactions in foreign currencies are recorded at the rate ruling at the date of transaction. All differences are taken to income and expenditure account.

#### 1.9 Regions

Ten regional committees operate around the country under the auspices of English Table Tennis Association Limited. All income and expenditure of Regions is included in the income and expenditure account. The net funds of Regions are included in the Balance Sheet.

### 2. Turnover

The total turnover of the company for the year has been derived from its principal activity wholly undertaken in the United Kingdom.

**Notes to the Financial Statements**

For The Year Ended 31 March 2013

**3. Operating surplus**

Operating surplus is stated after charging:

Depreciation of tangible assets

Operating lease rentals

Auditors' remuneration

Directors' remuneration (honorary)

	2013 £	2012 £
Depreciation of tangible assets	56,353	58,144
Operating lease rentals	21,340	21,007
Auditors' remuneration	3,800	3,700
Directors' remuneration (honorary)	6,000	5,700
	6,000	5,700

**4. Other interest receivable and similar income**

Bank interest: Core Funds

: BTTF Performance Programme

: BTTAD Performance Programme

	2013 £	2012 £
Bank interest: Core Funds	11,806	7,705
: BTTF Performance Programme	48	109
: BTTAD Performance Programme	137	111
	11,991	7,925

**5. Taxation**

U.K. taxation

U.K. corporation tax at current rates: Core Funds

: BTTF Performance Programme

: BTTAD Performance Programme

	2013 £	2012 £
U.K. corporation tax at current rates: Core Funds	2,361	1,541
: BTTF Performance Programme	10	22
: BTTAD Performance Programme	27	22
	2,398	1,585

Due to the company's non-profit making status, corporation tax is only chargeable on investment income received.

## Notes to the financial statements

For The Year Ended 31 March 2013

	Vehicles £	Fixtures, fittings & equipment £	Total £
<b>6. Tangible fixed assets</b>			
<b>Cost</b>			
At 1 April 2012	138,201	177,095	315,296
Additions	18,500	13,018	31,518
Disposals	(12,192)	0	(12,192)
At 31 March 2013	144,509	190,113	334,622
<b>Depreciation</b>			
At 1 April 2012	112,136	129,578	241,714
Charge for the year	25,108	31,245	56,353
Disposals	(12,192)	0	(12,192)
At 31 March 2013	125,052	160,823	285,875
<b>Net book value</b>			
At 31 March 2013	19,457	29,290	48,747
<b>Net book value</b>			
At 31 March 2012	26,065	47,517	73,582
<b>7. Stocks</b>			
Goods for resale		2013 £	2012 £
		23,598	20,474
<b>8. Debtors</b>			
Trade debtors		14,234	89,090
Other debtors		190,120	127,816
		204,354	216,906

**Notes to the Financial Statements**

For The Year Ended 31 March 2013

	Notes	2013 £	2012 £
<b>9. Creditors: amounts falling due within one year</b>			
Taxation and social security		52,922	52,345
Grants	13	294,555	521,730
Other creditors		298,637	244,825
		<u>646,114</u>	<u>818,900</u>

	2013 £	2012 £
<b>10. Statement of movements on income and expenditure account</b>		
Balance at 1 April 2012	489,226	464,229
Retained surplus for the year	28,639	24,997
Balance at 31 March 2013	<u>517,865</u>	<u>489,226</u>

	2013 £	2012 £
<b>11. Testimonial funds</b>		
Balance at 1 April 2012	47,741	49,389
Net movements in the year	(2,470)	(1,648)
Balance at 31 March 2013	<u>45,271</u>	<u>47,741</u>

**12. Financial commitments**

At 31 March 2013 the company had annual commitments under non-cancellable operating leases as follows:

	2013 £	2012 £
Expiry date within one year:      Property Lease	<u>21,672</u>	<u>21,340</u>

## Notes to the Financial Statements

For The Year Ended 31 March 2013

	01/04/12 b/fwd £	Received in year £	Expenditure £	ETTA Contribution £	31/03/13 c/fwd £
<b>13. Grants and expenditure</b>					
Sport England: Core Funding	0	2,559,131	2,559,131	0	0
Sport England: Additional Core Funding	0	280,580	280,580	0	0
	0	2,839,711	2,839,711	0	0
<b>Other Grants:</b>					
Sport England: Playground to Podium	56,388	208,529	264,917	0	0
Sport England: Club & Coach	0	114,913	114,913	0	0
Sport England: Premier League	0	10,000	10,000	0	0
Sport England: Disability Grant	76,550	0	13,303	0	63,247
Youth Sport Trust: Change4Life	114,177	0	3,320	0	110,857
Youth Sport Trust: School Games	17,830	0	15,000	0	2,830
Youth Sport Trust: Young Officials Project	32,720	5,722	7,271	0	31,171
UK Sport: BTTF World Class Programme	22,725	98,136	120,861	0	0
UK Sport: BTTAD World Class Programme	(73)	419,994	419,921	0	0
The Jack Petchey Foundation	53,737	146,870	202,009	0	(1,402)
Sportsmatch: Fred Perry Urban Cup	2,874	0	2,874	0	0
Regions	7,183	0	3,066	0	4,117
Miscellaneous	137,619	262,897	316,781	0	83,735
	521,730	1,267,061	1,494,236	0	294,555
<b>Total</b>	521,730	4,106,772	4,333,947	0	294,555



**Notes to the financial statements**

For The Year Ended 31 March 2013

**Note to 13:**

Grants received in year figure include the following:

	UK Sport: BTTAD	UK Sport: BTF	Youth Sport Trust - Young Officials
Grant	419,657	83,250	0
Bank Interest	137	48	0
Other Income	200	14,838	5,722
	419,994	98,136	5,722

**14. Related party transactions**

The directors are of the opinion that Sport England is a related party as it has significant influence over the financial and operating policies of the company. During the year the company received grants from Sport England in the sum of £3,353,843 (2012: £2,946,770).



## English Table Tennis Association Limited

### Appendix

For The Year Ended 31 March 2013

<b>Income</b>	<b>Notes</b>	<b>2013 £</b>	<b>2012 £</b>
Affiliation Fees	1	193,739	192,335
Sponsorship		25,465	25,435
Sport England Core Funding Grants		2,839,711	2,585,474
Other Grants		1,494,236	1,322,599
Bank Interest		11,806	7,705
Tournament Levies		3,692	4,031
Ranking Levies		32,070	32,838
Communications & Marketing	12	8,746	1,080
Coaching	5	127,446	112,934
Competitions	3	219,732	219,526
Miscellaneous Sales	4	25,615	75,537
International Programme	13	24,823	3,379
ITTF Men's World Cup	15	158,427	440,759
Talent Development & Performance	14	24,630	23,306
Development	11	67,872	105,975
Regions		99,380	72,539
		5,357,390	5,225,452
<b>Less expenditure:</b>			
Overheads	2	733,360	696,481
Development	11	701,867	792,935
Other Grants		1,494,236	1,322,599
Competition Costs	3	333,832	330,930
Communications & Marketing	12	314,088	168,358
Coaching	5	518,518	513,647
International Programme	13	23,962	11,238
Talent Development & Performance	14	409,140	236,313
Capital Programme		490,000	562,500
Sundry Costs	6	24,684	80,006
Regions		86,680	68,724
ITTF Men's World Cup	15	196,023	415,183
Corporation Tax		2,361	1,541
		5,328,751	5,200,455
<b>Net Surplus</b>		28,639	24,997

## Notes to the Appendix

For The Year Ended 31 March 2013

**1. Affiliation fees**

	2013 £	2012 £
Player Licences	42,473	39,367
Individual Membership	144,674	147,476
PremierClubs	5,665	4,605
Other	927	887
	<u>193,739</u>	<u>192,335</u>

**2. Overheads**

	Notes	2013 £	2012 £
General Salaries		360,528	332,395
Committee Costs	7	35,729	35,872
Staff/Officers' Expenses		52,122	45,419
Rent and Rates		36,211	35,238
Sundry Office Expenses		32,014	27,197
Telephone		14,271	19,649
Postage		20,871	16,551
Printing and Stationery		39,383	33,394
Insurance		29,343	30,393
Audit Fees		3,800	3,700
Legal & Professional Fees		6,813	9,321
General Depreciation		36,243	35,077
Irrecoverable VAT - Partial Exemption		64,591	64,392
Loss on Sale of Vehicles & Equipment		0	1,339
Costs re Player's Licence Affiliation Scheme		28,146	28,631
Contribution from PESSYP/Sing London		(19,413)	(18,246)
Contribution from BTTAD Programme		(14,090)	(13,240)
Other		6,798	9,399
		<u>733,360</u>	<u>696,481</u>

**3. Competitions**

	Income £	Expenses £	2013 Net Costs £	Income £	Expenses £	2012 Net Costs £
<b>Events Staff</b>						
Salaries	0	76,215	76,215	0	68,988	68,988
Expenses	0	21,261	21,261	0	27,053	27,053
	<u>0</u>	<u>97,476</u>	<u>97,476</u>	<u>0</u>	<u>96,041</u>	<u>96,041</u>
<b>English Championships</b>						
Senior Nationals	9,813	18,830	9,017	10,737	19,136	8,399
Junior Nationals	5,142	12,788	7,646	6,630	14,081	7,451
Under 11-14 Champs	4,331	10,722	6,391	3,439	7,814	4,375
	<u>19,286</u>	<u>42,340</u>	<u>23,054</u>	<u>20,806</u>	<u>41,031</u>	<u>20,225</u>
<b>National Competitions</b>						
County Championships	11,914	6,881	(5,033)	11,406	7,650	(3,756)
British Leagues	99,480	91,128	(8,352)	96,220	88,856	(7,364)
Grand Prix	54,574	61,652	7,078	60,150	69,085	8,935
Other Competitions	34,478	34,355	(123)	30,944	28,267	(2,677)
	<u>200,446</u>	<u>194,016</u>	<u>(6,430)</u>	<u>198,720</u>	<u>193,858</u>	<u>(4,862)</u>
	<u>219,732</u>	<u>333,832</u>	<u>114,100</u>	<u>219,526</u>	<u>330,930</u>	<u>111,404</u>

**4. Miscellaneous Sales**

	2013 £	2012 £
Olympic Tickets	1,208	65,062
Other Sales	24,407	10,475
	<u>25,615</u>	<u>75,537</u>

## Notes to the Appendix

For The Year Ended 31 March 2013

	Notes	£	2013 £	£	2012 £
<b>5. Coaching</b>					
Salaries			461,406		464,742
Other Coaching Costs			172,025		160,806
			<u>633,431</u>		<u>625,548</u>
Less Expenditure covered by Club & Coach Grant			114,913		111,901
Total Expenditure			<u>518,518</u>		<u>513,647</u>
Less Income			127,446		112,934
Net Costs			<u>391,072</u>		<u>400,713</u>
<b>6. Sundry costs</b>					
Bank Charges			10,252		9,358
Cost of Olympic Tickets			1,208		65,062
Costs of Miscellaneous Sales			13,224		5,586
			<u>24,684</u>		<u>80,006</u>
<b>7. Committee costs</b>					
National Council			12,101		14,677
Management			7,756		8,616
Other			15,872		12,579
			<u>35,729</u>		<u>35,872</u>
<b>8. Ivor Montagu fund</b>					
Balance at 1st April 2012			26,907		27,072
Donation			0		50
			<u>26,907</u>		<u>27,122</u>
Less awards to juniors			850		215
Balance at 31st March 2013			<u>26,057</u>		<u>26,907</u>
<b>9. Tom Blunn fund</b>					
Balance at 1st April 2012			20,834		22,316
Less Awards to Umpires			1,620		1,482
Balance at 31st March 2013			<u>19,214</u>		<u>20,834</u>
<b>10. Performance fund</b>					
Balance at 1st April 2012			0		0
Donations			30,800		0
Balance at 31st March 2013			<u>30,800</u>		<u>0</u>
<b>11. Development</b>					
Salaries			837,369		761,239
Other development costs			222,916		274,808
			<u>1,060,285</u>		<u>1,036,047</u>
Less expenditure covered by: Playground to Podium Grant		264,918		188,612	
Other Grants		93,500		54,500	
			<u>358,418</u>		<u>243,112</u>
Total Expenditure			<u>701,867</u>		<u>792,935</u>
Less Income			67,872		105,975
Net Costs			<u>633,995</u>		<u>686,960</u>
<b>12. Communications &amp; marketing</b>					
Salaries			74,398		74,158
Communication Costs			178,552		85,272
Marketing Costs			61,138		8,928
Total Costs			<u>314,088</u>		<u>168,358</u>
Less Income			8,746		1,080
Net Costs			<u>305,342</u>		<u>167,278</u>

## Notes to the Appendix

For The Year Ended 31 March 2013

<b>13. International programme</b>	<b>Income £</b>	<b>Expenses £</b>	<b>2013 Net Costs £</b>	<b>Income £</b>	<b>Expenses £</b>	<b>2012 Net Costs £</b>
Junior & Cadet 6 Nations	8,802	12,315	3,513	0	0	0
Senior 6 Nations	0	0	0	3,379	11,238	7,859
European Champs Qualification	16,021	11,647	(4,374)	0	0	0
	<u>24,823</u>	<u>23,962</u>	<u>(861)</u>	<u>3,379</u>	<u>11,238</u>	<u>7,859</u>

<b>14. Talent development &amp; performance</b>	<b>2013 BTTF (1) £</b>	<b>2013 BTTAD (2) £</b>	<b>2013 ETTA £</b>	<b>2012 BTTF (1) £</b>	<b>2012 BTTAD (2) £</b>	<b>2012 ETTA £</b>
<b>Income</b>						
UK Sport (Note 3)	105,975	419,584	-	190,957	411,463	-
Bank Interest	48	137	-	109	111	-
Other Income	14,838	200	24,630	5,200	0	23,306
<b>Total Income</b>	<u>120,861</u>	<u>419,921</u>	<u>24,630</u>	<u>196,266</u>	<u>411,574</u>	<u>23,306</u>

<b>Expenditure</b>						
Staff Costs	47,097	136,644	156,388	112,181	127,345	53,215
Training Programme	57,159	114,514	56,380	53,929	86,038	58,383
International Competition	13,494	62,876	119,721	21,708	110,272	97,092
Sports Science	-	41,223	-	-	40,614	-
Youth Development	-	-	19,485	-	-	15,832
Miscellaneous	3,111	64,664	57,166	8,448	47,305	11,791
<b>Total Expenditure</b>	<u>120,861</u>	<u>419,921</u>	<u>409,140</u>	<u>196,266</u>	<u>411,574</u>	<u>236,313</u>
<b>Net Expenditure</b>	<u>0</u>	<u>0</u>	<u>384,510</u>	<u>0</u>	<u>0</u>	<u>213,007</u>

**Notes:**

- (1) The British Table Tennis Federation Limited (BTTF) is the governing body for performance of UK table tennis funded by UK Sport. As the Lead Nation, the ETТА has been authorised through a service level agreement, approved by UK Sport to administer the funds and reports directly to UK Sport and the BTTF Performance Management Group.
- (2) The British Table Tennis Association for People with Disabilities (BTTAD) is the governing body for performance of UK table tennis for people with disabilities and is funded by UK Sport. As the Lead Nation, the ETТА has been authorised through a service level agreement, approved by UK Sport to administer the funds and reports directly to UK Sport and the BTTAD Performance Management Group.
- (3) Actual UK Sport Funding for the BTTF in the year 2012/2013 was £83,250. This figure has been increased by the surplus of £22,725 which was brought forward from 2011/12. Actual UK Sport Funding in the year 2011/12 was £193,750. This figure has been reduced by £2,793. This figure relates to a surplus of £22,725 carried forward into 2012/13 less a surplus of £19,932 brought forward from 2010/11.

Actual UK Sport Funding for the BTTAD in the year 2012/13 was £419,657. This figure has been reduced by £73 being a deficit brought forward from 2011/12. Actual UK Sport funding for the BTTAD in the year 2011/12 was £432,556. This figure has been reduced by £21,093. This reduction includes £21,093 of the £21,166 deficit brought forward from 2010/11.

**15. ITTF Men's World Cup**

The ETТА organised the ITTF Mens World Cup in the financial year 2012/13. In the financial year 2011/12 the income and expenditure relates to the ITTF Pro Tour Grand Finals which was also organised by the ETТА.

# Glossary of Abbreviations



**etta**



Shaping the future of English table tennis

<b>APS</b>	Active People Survey
<b>BL</b>	British League
<b>BME</b>	Black and Minority Ethnic persons/groups
<b>BOA</b>	British Olympic Association
<b>BTTAD</b>	British Table Tennis Association for people with Disabilities
<b>BTTF</b>	British Table Tennis Federation
<b>BUCS</b>	British Universities & Colleges Sport
<b>C4L</b>	Change 4 Life
<b>CPD</b>	Continual Professional Development
<b>CRB</b>	Criminal Records Bureau
<b>CSP</b>	County Sports Partnership
<b>CTTF</b>	Commonwealth Table Tennis Federation
<b>CU</b>	County Umpire
<b>CWP</b>	Calendar Working Party
<b>DBS</b>	Disclosure and Barring Service
<b>DCMS</b>	Department for Culture, Media & Sport
<b>EIS</b>	English Institute of Sport
<b>ETTA</b>	English Table Tennis Association
<b>ESTTA</b>	English Schools' Table Tennis Association
<b>ETTU</b>	European Table Tennis Union
<b>HE</b>	Higher Education
<b>HPS</b>	High Performance Sessions
<b>IM</b>	Individual Membership
<b>IPP</b>	Instant Ping! Pong
<b>IR</b>	International Referee
<b>ISF</b>	International School Sport Federation
<b>ITTF</b>	International Table Tennis Federation
<b>IU</b>	International Umpire
<b>IYS</b>	International Youth Squad
<b>JBL</b>	Junior British League
<b>JPF</b>	Jack Petchey Foundation
<b>NCL</b>	National Cadet League
<b>NGB</b>	National Governing Body
<b>NJL</b>	National Junior League
<b>NR</b>	National Referee
<b>NU</b>	National Umpire
<b>NURC</b>	National Umpires and Referees Committee
<b>PESSYP</b>	Physical Education, School Sport & Young People
<b>PL4S</b>	Premier League 4 Sport
<b>RDM</b>	Regional Development Manager
<b>SLUK</b>	Sports Leaders United Kingdom
<b>TO</b>	Tournament Organiser
<b>TR</b>	Tournament Referee
<b>TTC</b>	Table Tennis Club
<b>TTK</b>	Table Tennis for Kids
<b>TU</b>	Tournament Umpire
<b>UKCC</b>	United Kingdom Coaching Certificate
<b>UKCF</b>	United Kingdom Coaching Framework
<b>UKSG</b>	United Kingdom School Games
<b>VBL</b>	Veterans' British League
<b>VNL</b>	Veterans' National League
<b>WBL</b>	Women's British League
<b>WIC</b>	World Individual Championships
<b>WSFF</b>	Women's Sport Fitness Foundation
<b>YDS</b>	Youth Development Squad
<b>YST</b>	Youth Sport Trust

Patron: Her Majesty the Queen  
Directors: Alex Murdoch (Chairman), Peter Bradley (Deputy Chairman), Martin Clark FCCA (Treasurer)  
Company Secretary: Richard Yule (Chief Executive)

English Table Tennis Association Ltd  
Registered in England and Wales No. 4268058  
Registered Office  
Queensbury House (4th Floor)  
Havelock Road, Hastings  
East Sussex, TN34 1HF