



## Video message from CEO Sara Sutcliffe

**Author:** Paul Stimpson

**Posted On:** July 20, 2017

Table Tennis England Chief Executive Sara Sutcliffe has released a video to members following the EGM announcement.

In it, she speaks of the importance of the vote at the EGM as Table Tennis England seeks to restore its Sport England funding.

Table Tennis England has also produced a two-page flyer to help members understand the importance of Sport England funding and the voting procedure. The flyer is shown here:

# Where our funding comes from



72%



Membership Fees

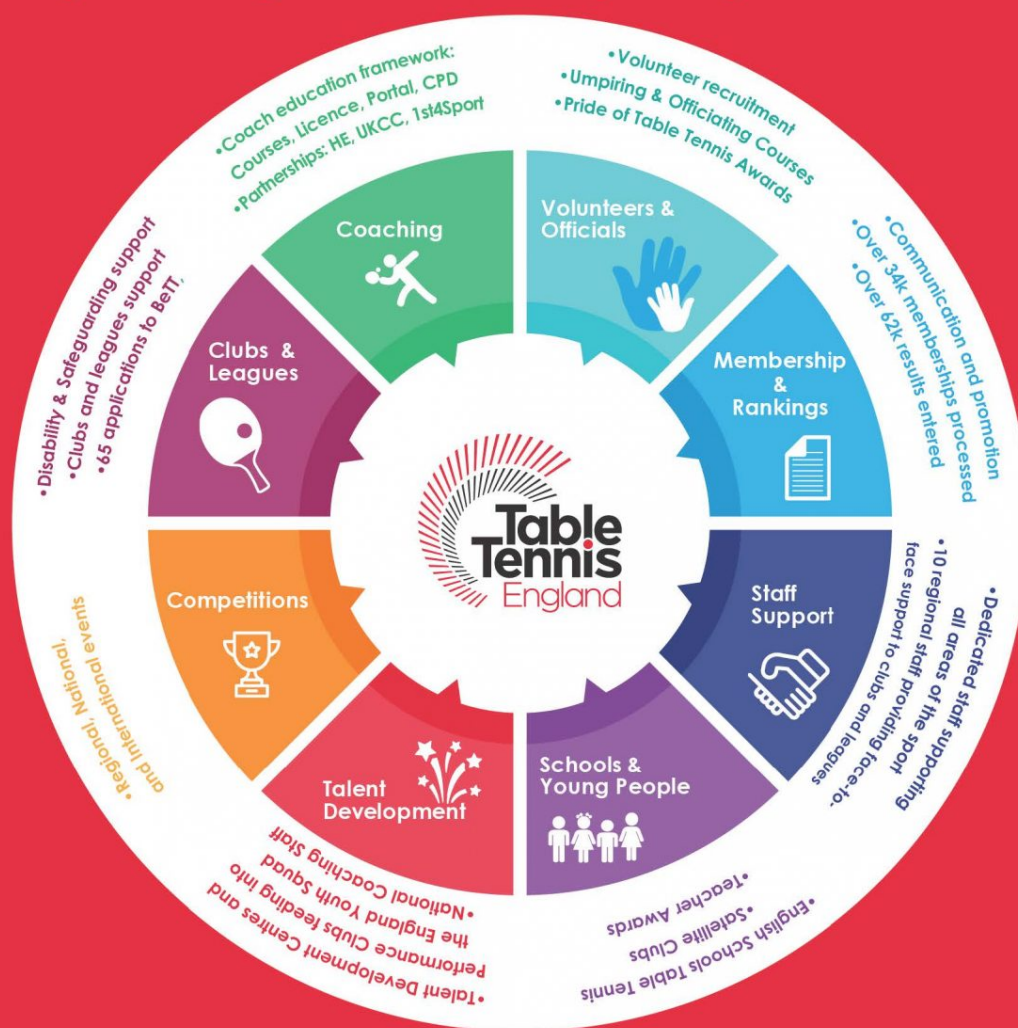
8%

Other Income

20%

\*excludes BPTT performance funding

## How Sport England money helps table tennis



# Extraordinary General Meeting

## August 12, 2017



### Why is the EGM being held?

The EGM is being held so that Table Tennis England can comply with the Government's Code for Sports Governance and restore our Sport England funding, which has been suspended.

The suspended funding is causing significant cashflow problems, resulting in programmes being put on hold, as well as reputational damage.

### Key points

- To restore funding, we need 75% or more of Company Members to vote in favour of the Board's proposal.
- Each affiliated League has a Company Member. Each National Councillor is also a Company Member. Company Members carry weighted votes depending on the number of registered player members they represent.
- At the AGM on July 8, the proposal was defeated by a handful of votes, with 74.93% voting in favour.
- Following the AGM vote, Sport England suspended our funding.
- Without Sport England funding, we cannot support clubs, leagues, coaches and officials; organise competitions; fund talent development or administer membership and rankings. Simply, we cannot operate as a professionally run National Governing Body supporting the growth and development of our sport.

### How to vote

- Every Company Member has a vote and will receive a voting pack, including Proxy forms, by post and by email.
- There are three types of Company Member: Individual (Board member); County (National Councillor); League Representative Company Member (LRCM).
- If you do not hold any of these positions, please visit [tabletennisengland.co.uk/organise/counties-and-leagues/voting-information/](http://tabletennisengland.co.uk/organise/counties-and-leagues/voting-information/) to find out who your Company Member is. This page also contains LRCM nomination forms and more information about the voting process.
- If you are not entitled to vote personally, you can still make a difference by talking to your Company Member.
- This is a vote for the future of the sport, so please make your vote and your view count.

For more information about the AGM and the EGM, visit  
**[tabletennisengland.co.uk/about/governance/agm/](http://tabletennisengland.co.uk/about/governance/agm/)**

<https://newsarchive.tabletennisengland.co.uk/news/archived/video-message-from-ceo-sara-sutcliffe/>